



IN A Nutshell



No. 185

Newsletter of the City of Walnut Creek

SPRING 2019

MEMORIAL DAY OBSERVANCE

Plan to spend part of your Memorial Day at the City's annual ceremony on Monday, May 27. The City will honor those who gave their lives in service to our country. The event begins at 10:00 a.m. in Civic Park, and will include a musical tribute by the Walnut Creek Concert Band.



2ND SATURDAY SPOTLIGHT CONTINUES



Go behind the scenes at local non-profit organizations that provide so much value to our community in the 2nd Saturday Spotlight series. January's visit to Tony La Russa's Animal Rescue Foundation and February's backstage tour of the Lesher Center for the Arts gave visitors an inside look at these important organizations. Find out what's in store for the rest of 2019's events by visiting walnut-creek.org/spotlight.

LOOK INSIDE FOR SUMMER CAMP GUIDE

Summer camp registration gets underway at the end of the month, but you can begin checking out your options now with the camp guide found inside your Nutshell. Classes can fill up quickly, and there is something for everyone.



Above: Visitors soak in "About Abstraction" by Christophe Fromy at the Bedford Gallery

Free First Tuesdays: On March 5 and May 7, enjoy free admission and family activities at the Bedford Gallery. **See page 3 for details.**

CERT: IS IT YOUR TIME TO JOIN THE TEAM?

What is CERT? It stands for Community Emergency Response Teams, and they are local volunteers who have been trained and are ready to step in to support first responders in the event of a disaster or emergency. CERT members go through 20 hours of basic training, and then are sworn in as volunteer Disaster Service Workers for the City. The next CERT training sessions begin in April, and following the Friday evening, April 12 kickoff, the classes will be held on Saturdays. The training culminates in a full exercise event that will showcase all the students have learned. The City of Walnut Creek values its CERT members, and appreciates the

help they have provided over the past year in doing more than just standing ready for a disaster. Our CERTs have helped police search for a missing person, assisted Public

Works in reducing flood hazards, and taught personal preparedness courses. If you are interested in supporting your local Walnut Creek Community Emergency Response Teams,



please reach out to cert@walnut-creek.org. Donations help support CERT radio infrastructure, run classes and provide other preparedness support to the community. Many thanks to the Sunrise Rotary Club for its generous donation! Find out more by visiting walnut-creek.org/CERT.



SPRING HIGHLIGHTS

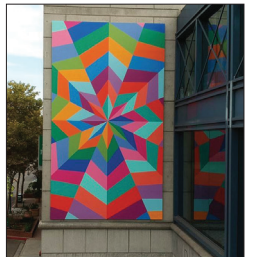
Check cable listings or walnutcreektv.org for the full schedule of shows
For original programs, community events and more, visit the City's YouTube channel.

Sit down with the Mayor
Mayor Cindy Silva outlines her vision for the City in an in-depth discussion with Creek Currents host Brendan Moran.

State of the City
The Walnut Creek Chamber of Commerce hosts its annual "State of the City" event, including an update from the Mayor.

Live! from the Library: Eleanor Roosevelt
Live! from the Library presents an imaginative "meet and greet" with one of history's most famous women. Bay Area actress Laurie Strawn brings Eleanor's story to life, sharing the former First Lady's personal history along with the remarkable life and times during which Mrs. Roosevelt lived.

Mural art project comes to life
Have you seen the new mural that graces the Lesher Center for the Arts? Watch how the "West Coast Barn Quilt" was created!



Rethinking Mobility
The City of Walnut Creek is working on a strategic plan to reduce automobile trips and manage parking demand while enhancing access for those walking, biking, and using public transit. Get a quick intro to the project in a video introduction.

Channel information
Walnut Creek TV is found on Comcast Channel 28 in incorporated Walnut Creek, Channel 26 in Rossmoor, and on U-Verse Channel 99. Not a cable subscriber? Watch the channel live online at walnutcreektv.org.



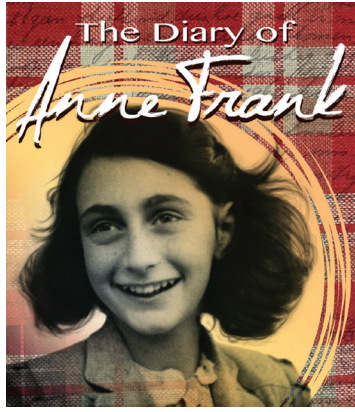
Arts + Rec Job Fair
Monday, February 25, 4pm - 7pm
Heather Farm Community Center, Club Room

Join our Walnut Creek Arts + Rec team! We're looking for enthusiastic, creative, and community oriented part time employees in a wide variety of roles – summer camp leaders, lifeguards, gym/building attendants and more. Flexible schedules; night and weekend shifts available. Come by our Arts + Rec Job Fair to learn about open positions and the application process. To view current openings, visit bit.ly/cityofwalnutcreekjobs.

Here's what's happening

CENTER REP PERFORMANCES

The Diary of Anne Frank March 29 - April 28, 2019
Winner of the Pulitzer Prize, Tony Award, Critics Circle Award and virtually every other coveted prize of the theatre. This enduring tale of hope captures the claustrophobic realities of eight people hiding from the Nazis in a concealed storage attic in war-torn Amsterdam. Anne's daily existence - her fears, her hopes, her laughter and her family's desperate attempt to preserve humanity in an inhumane world - drive this transcendently powerful true-life tale. Tickets available at lesherartscenter.org or 925-943-7469.



BOUNDARY OAK GOLF COURSE

For reservations or specific details for the following Boundary Oak events, please call 925-934-4775 x 20.

Fourth Friday Dinners
March 22, April 26, May 24, 2019
Join us for a casual dinner buffet in The Clubhouse from 5pm to 7pm. The menu theme rotates each month! Cost: \$25 per person plus tax.

Second Annual Easter Egg Hunt
Saturday, April 20, 1-3pm
Bring the family to this fun, free community event featuring bouncy houses and face painting. The egg hunts for all age groups will be 1:30-1:45pm. Call 925-934-3600 x12 for more information.

Easter Champagne Brunch
April 21, 2019, Reservations available from 10:30am - 2pm
A fantastic array of food including a carving station, an omelet station, an assortment of salads, and scrumptious desserts! Cost: \$40 per person; \$20 for children 12 and under; children 5 and under eat free with paying adult (plus tax and gratuity).

Mother's Day Brunch
May 12, 2019, Reservations available from 10:30am - 1:30pm
Treat Mom to an amazing experience with a mouth-watering gourmet brunch. Cost: \$40 per person; \$20 for children 12 and under; children 5 and under eat free with paying adult (plus tax and gratuity).

CENTER FOR COMMUNITY ARTS

Camp Community Arts- Spring
Kids ages 3-14 are invited to spend their spring break painting, drawing, dancing and making music at Shadelands Art Center. All classes are taught by working artists! Camp runs April 1-5. Half and full day options are available, as well as morning and after care. Visit communityarts.org/camps or call 925-943-5846.

Spring Family Art Day: Art Carnival!
Mark your calendars for Family Art Day, Saturday, May 18th from 10am to 2pm. Join us at Shadelands Art Center for art-making stations, family dance, drumming, and more! Free and open to the public and fun for the whole family. Food available for purchase. Learn more at communityarts.org or call 925-943-5846.

Community Arts Preschool Carnival
Join Community Arts Preschool on April 20th from 10am to 12pm as we celebrate Week of the Young Child with activities, light snacks, and a bounce house in the backyard of our Heather Farm location. Play, make art, and learn more about preschool programs and scholarships at Community Arts Preschool. Free and open to families with children age 2 to 5 years old. Siblings welcome! For more information call 925-943-5846.

Center for Community Arts' Youth Art Show
Next time you're at Shadelands Art Center, be sure and check out some of the wonderful work created by students in Community Arts' Youth Arts program. The show runs April 9th through May 23rd. Join us for an opening reception April 12th from 5:30 to 7pm at Shadelands.

Family Yoga
February 2, 10:00am
Shadelands Auditorium
Dance, stretch, breath and play with your children in a special family yoga class with Ms. Lauren! Families are welcome to stick around after to play and eat lunch together in the backyard. Please wear comfortable clothing and bring yoga mats for each participant. \$20 suggested donation per family or pay what you can.

BEDFORD GALLERY

Last chance to view Altered States
January 13 - March 24 2019



Run, don't walk, to Bedford Gallery's current exhibition *Altered States*, before it closes Sunday, March 24th! *Altered States*, guest curated by Heather Marx, features artists across generations living and working along the California coast who harness natural elements or the environment to create their artwork. The artists work in a wide range of media and share a passion for creating art that is about process and reclamation. This exhibition highlights the natural cycles of our complex environment and offers patrons an opportunity to slow down and reflect on how we are all interconnected by the sun, moon, air, and tides.

Up Next: Tradition Interrupted
April 11 - June 23
Opening Reception:
Thursday, April 11, 6 - 8pm
Tradition Interrupted explores the methods used by artists to conflate contemporary ideas with traditional art and craft in



AT THE LESHER CENTER

Rock the CASA:
An Evening of Music for Children in Need featuring Patti Labelle. Local TV personality Dan Ashley returns to host his annual fundraising concert on March 2nd.



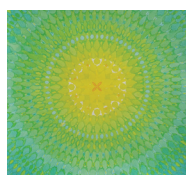
Fun for the whole family!
• Fantasy Forum Actors Ensemble's The Emperor's New Clothes on March 7-10
• Ken Bergmann's Percussion Discussion on

a range of media, from rugs and quilts to metal and ceramic. After hundreds--and sometimes thousands--of years of crafting and creating, many traditional practices continue to visually define a culture. Merging age-old customs with innovation, the artists in this show redefine or reclaim culturally historic ideas to create hybrid works for our contemporary world.

Free First Tuesdays:
March 5, May 7 12 - 5pm
Enjoy free admission and a family-friendly art activity at the Bedford Gallery on the first Tuesday of the month! Docents will be on the floor to lead informal tours and answer questions. Join us March 5th for *Altered States*, and May 7th for *Tradition Interrupted*.

Community Art Gallery Exhibitions
The Community Art Gallery located in the Downtown Walnut Creek Library is a wonderful place to view exceptional art from Bay Area artists and beyond at no cost!

On View Now: Angela Baker Solo Exhibition
February 27 - April 15
Angela Baker, Home 3, 2017, watercolor on paper



Up Next: Portraits of Trinity: Photographs by Jordan Rose Jurich Weston
April 17 - June 3
Jordan Rose Jurich Weston, Polly, 2017, Archival Pigment Print



March 12-16
• DLUX Puppets' Alice in Wonderland on May 2-4
• Fantasy Forum Actors Ensemble's Cinderella on May 9-12

The Lesher Foundation continues the Newsmakers Speaker Series
with authors J.D. Vance (Hillbilly Elegy) on March 4th and Amy Tan (The Joy Luck Club) on April 16th.



PAPER OR PLASTIC BAGS? HOW ABOUT NEITHER?

The Solution is reusable so Bring Your Own Bag (BYOB)!



Did you know that the City of Walnut Creek has prohibited retailers and restaurants from providing single-use carryout plastic bags since 2014?

There are many good reasons for cities and towns to consider a plastic bag ordinance. Collectively, we are using 1 million bags per minute and less than 5%

of them are being recycled. Many end up in our landfill, where scientists estimate they will take 1,000 years to biodegrade.

This is a clean water issue and an environmental problem with a simple solution.

To avoid paying 10 cents per paper bag, consider bringing reusable bags to the

store or decline a bag when making a purchase. Restaurants can still provide paper carryout bags free of charge for take outs. For more information about the bag ban, visit our website at walnut-creek.org/cleanwater.

Thank you for helping us build a better Walnut Creek!

SUSTAINABILITY CORNER

Earth Day was created on April 22, 1970 to celebrate clean air, land, and water. Celebrate Earth Day 2019 by taking one or more actions below. Find out about each of them by visiting walnut-creek.org/goinggreen.

Coming Soon: Cleaner Contra Costa Challenge

We're excited to announce the launch this April of a new online tool called the Cleaner Contra Costa Challenge that will make it easy for our residents to take action on climate change. Residents will be able to form teams and work together with their friends and neighbors to care for the climate. Every day, there are actions we can take to make an impact, from deciding how we get to work to how we power our homes. These actions can help families save money by saving energy, and contribute to an active lifestyle and healthier community. The Cleaner Contra Costa Challenge is funded by a grant from the Bay Area Air Quality Management District. Register online for our e-newsletter, and you'll get a notification

when it is available.

Spring Clean with Recycle Where? Tool

Spring cleaning is here and you can use the online "Recycle Where?" tool to help you. The goal of "Recycle Where?" is to reduce waste by providing accurate information about recycling, reuse, and proper disposal options for residents and businesses without regard to traditional City boundaries. Find out where you can donate, drop off, and recycle your items by visiting recyclewhere.org.



Go Solar with Federal Tax Credits

This is the last year to take advantage of the federal solar tax credit at its highest level. The Solar Investment Tax Credit provides a 30% federal tax credit for solar systems

installed on residential and commercial properties by December 31, 2019. After 2019, the tax credits begin stepping down.

Choose 100% Renewable Electricity

If you are unable to install solar on your property because it is an apartment or because of shading or other issues, you can still get 100% renewable electricity from your electricity provider. MCE is the default electricity provider in Walnut Creek, and offers a "Deep Green" 100% renewable electricity option from local solar and wind. PG&E also offers a 100% renewable electricity option. Visit www.walnut-creek.org/goinggreen to learn more and sign up for 100% renewable electricity.



City of Walnut Creek & Friends of the Creek
30th Annual Creek Cleanup Day

HELP CLEAN AND RESTORE OUR CREEKS

Photo: Brad Heckman

SAVE THE DATE: CREEK CLEANUP DAY, MAY 11

The City of Walnut Creek and Friends of the Creek invite you to the 30th Annual Creek Cleanup Day. Pull out your old sneakers and gloves, and plan to get wet! You can help clean and restore our creeks.

The event will take place from 9:00 a.m. until Noon on Saturday, May 11. Advance registration is required; get all the details at FriendsOfTheCreeks.org.

Free technical advice for creekside property owners



If you are a Walnut Creek resident with a creek on your property, you are eligible to receive free advice on creek care, restoration and maintenance. This service is funded by the Contra Costa County Flood Control and Water Conservation District. Staff from California Urban Streams Partnership (CUSP) can provide a site evaluation and advice on how to address issues such as creek bank failure, erosion and flooding. They can provide you with information on the pertinent regulatory process and suggest qualified local engineers or contractors. Remember, your actions can change the condition of your creek upstream, downstream and across from your property. Learning and working with your neighbors can ensure a coordinated effort that works for everyone! Contact CUSP at custreams@gmail.com or (510) 932-2370 to request free advice or schedule a hands-on workshop for your neighborhood.

FLOOD RISK: Would you be able to do repairs or rebuild?

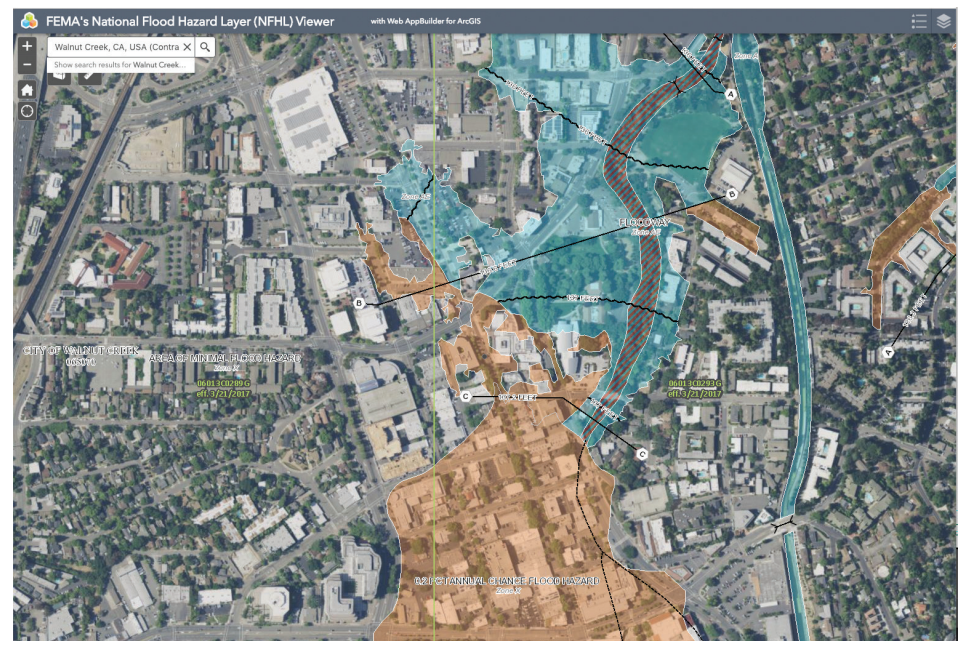
Living in a flood zone requires flood insurance. Most standard homeowners' and renters' policies do not cover flood damage. Even if you do not live in a flood zone and are not required to have flood insurance, you may want to consider it. Flooding is the nation's most common natural disaster, and as California's wildfire risk increases, the risk of flood increases as well.

Large-scale wildfires dramatically alter the terrain and ground conditions. Normally, vegetation absorbs rainfall, reducing runoff. However, wildfires leave the ground charred, barren, and unable to absorb water, creating conditions ripe for flash flooding and

mudflow. Flood risk remains significantly higher until vegetation is restored—up to 5 years after a wildfire. Flooding after a fire is often more severe, as debris and ash left from the fire can form mudflows.

Flood insurance for areas outside the high-risk flood zones may be more affordable, as the risk of flooding is significantly lower. Contact your insurance agent for information specific to your situation and review the information at Floodsmart.gov

The City flood maps were updated in March 2017. Visit <https://www.fema.gov/national-flood-hazard-layer-nfhl> to search for your home or business.



YOUR PARKS, YOUR FUTURE: Opportunities for public engagement continue in 2019



YOUR PARKS, YOUR FUTURE is a multi-phase planning project to shape the future of Arts + Recreation programs, Civic Park, Heather Farm Park, and our community facilities (Heather Farm Community Center, Clarke Swim Center, Civic Park Community Center, and Shadelands Art Center). The project goal is to ensure these parks, community facilities, and programs best serve the community well into the future.

In 2018, a series of pop-up events around the City, an interactive community workshop at Civic Park, and an online survey engaged

over 1,500 Walnut Creek residents in the first phase of the project. Information was gathered on community preferences for the future of Arts + Rec programs and the overarching 10-15 year vision for Civic Park, Heather Farm Park, and our community facilities.

This spring there are multiple opportunities for the community to comment at public meetings on the first key documents for the project. The Arts + Recreation Programming Plan and Facility Analysis documents will be reviewed by the project's Advisory Committee, the Arts and PROS Commissions

and the City Council from late February to mid-April. To receive notification of upcoming meetings, sign up for email alerts at www.walnut-creek.org/yourparks.

Phase II of the project, which encompasses Master Plans for Civic Park and Heather Farm Park, will continue through Fall 2020. Look for information coming in late spring on pop-up events and community workshops for the park master planning process.

For more information about the project and related documentation, please visit www.walnut-creek.org/yourparks.

City Updates its Economic Development Strategic Plan

In December, the City completed its update of its Economic Development Strategic Plan. The plan was originally created in 2004 and received a refresh using new data about the local economy as well as input from more than 60 different community members and partner organizations.

The latest data shows Walnut Creek as a regional economic hub. It contains strategies for the next five years and beyond to strengthen our presence as a regional destination, enhance the City's quality of life, maintain and grow our fiscal vitality, and foster a diverse economy in the face of changing industry trends.

Read the updated Economic Development Strategic Plan and Market Study on the City's Economic Development section of the website. City Council and staff look forward to working with all community members on the implementation of the plan over the next several years.

Shadelands PBID renews for 10 years

THE SHADELANDS BUSINESS Park has long been a hub of activity in Walnut Creek. In 2014, a unified group of property owners in the business park worked with City Council to form the Shadelands Property & Business Improvement District (PBID). The PBID members assess themselves and use the raised funds to improve all aspects of the business and lifestyle center.

During the first five years of its existence, the PBID's members worked together on a series of initiatives to promote the Shadelands Business Park, attract diverse and innovative businesses, enhance property values, and enrich quality of life for businesses, customers, and visitors. The initiatives included:

- A free shuttle from Pleasant Hill BART, known as County Connection #7 and decorated with special Shadelands bus wrap. The shuttle carries more than 105,000 riders every year

- A series of zoning amendments for the Shadelands area, drafted as a collaboration between the Shadelands Steering Committee and Walnut Creek City Council, to allow for more flexible uses in the business park

- A field office for the Walnut Creek Police Department that opened in 2016

- Transportation improvements, including a test bike share program for employees and a joint Multi-Modal Study with the City to study traffic flows and connectivity options

- Regular events and newsletters to share out activity

Since 2014, vacancy rates in the Shadelands have declined by half, with the vacancy rate moving from the 40% to below 20%.

The PBID members decided to continue their momentum and just voted to renew the PBID for a new 10-year term starting in 2020. This continues the close partnership of the PBID, the City, and the Chamber of Commerce, with many exciting improvements on the horizon.

Crime Prevention in Your Neighborhood

How can an active neighborhood group within the community improve safety?

Let us count the ways! The components of neighborhoods working together with the Walnut Creek Police Department can boost prevention efforts in a variety of ways.



As Neighbors –

So often, the first line of defense in our homes comes from being vigilant for your street and having good relationships with neighbors. People in shared neighborhoods have the most familiarity with the people and cars that frequent there. We make things more difficult for potential criminals when we lock our doors and windows, when we secure gates and yards, and when we're on the lookout for strange cars and unfamiliar individuals within our neighborhoods. Not to say there won't be people passing through your neck of the woods, but if someone doesn't appear to belong and they're acting suspicious – don't hesitate to call the Walnut Creek Police Department to check it things out. Reminder: program the Department's non-emergency number into your phone today – 925-935-6400.

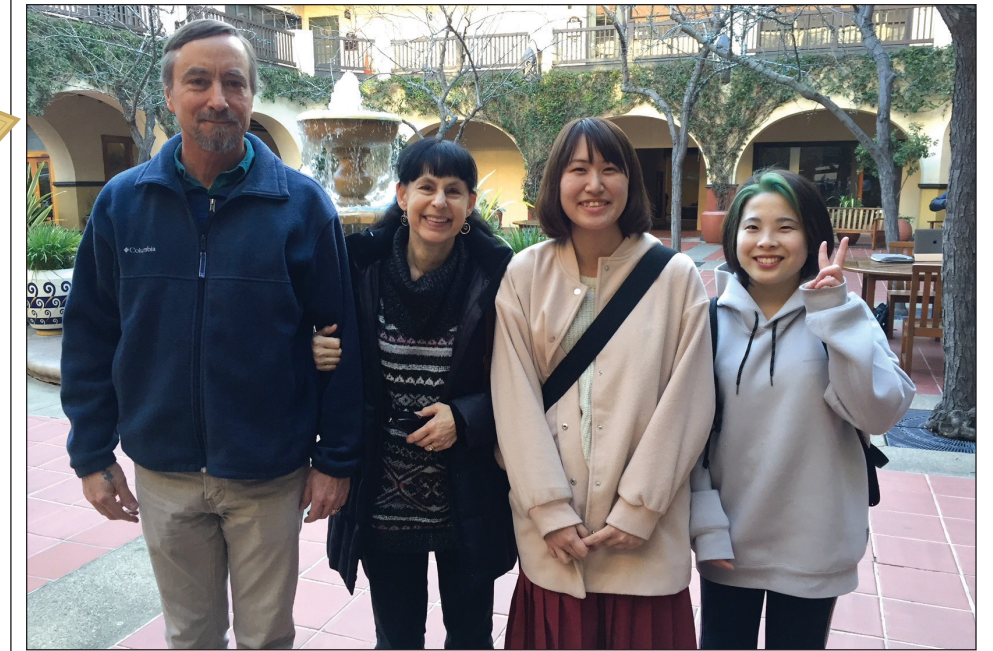
With Cameras –

Some residents have alarm systems with video surveillance capability. Many neighborhoods participate in neighborhood watch programs and share information about incidents captured on these surveillance systems with one another, even more so with the use of Nextdoor.com. Wouldn't you want to know more about the on goings of your home, your neighborhood, and what people are doing there even when you aren't? WCPD often gets asked if the utilization of cameras, both surveillance and doorbell, are helpful in solving crime. It most certainly is, and it can be a tool for you in crime prevention as well. It is an additional tool for police departments to utilize when trying to learn more about, and potentially solve a crime. It allows a partnership between you, your neighbors, and the police department to share information. Visit the Police Department's webpage for more on how you can potentially register your camera location with the Department.

With Social Media –

Thousands of Walnut Creek residents follow the Police Department on Twitter, Facebook, and Nextdoor. Nextdoor in particular is useful for your neighborhood community. The conversations on Nextdoor may range from missing pets to items for sale, but it also can be helpful in tracking suspicious activity in your neighborhood. It's good to remember that posts on your Nextdoor community aren't visible to the Police Department or City, just replies and comments that you make on our posts.

OPEN YOUR HOME TO AN INTERNATIONAL STUDENT!



The Frankman family with their guests Momoko and Mizuki from Japan

THE INTERNATIONAL EDUCATION CENTER at Diablo Valley College is looking for local hosts to house international students on a temporary basis while they improve their English skills. All types of hosts are welcome - single adults or couples, with or without children. Short and long term placements are available, and all students already speak English quite well. Host families will receive a monthly stipend of \$900 per student, and must provide a private bedroom and two meals per day for the student(s). For more information, please contact Fia Parker, at 925-876-0080 or email: fparker@dvc.edu.

Mountain Shadow Film Society 2019 Season



Mountain Shadow Film Society is accepting a limited number of pro-rated memberships for the remainder of the 2019 Season. Mountain Shadow brings the best in foreign and independent filmmaking to Walnut Creek. See the Membership tab on the website: <http://mountainshadow.org>.

In addition, submissions for the 5th Annual Short Film Competition will be open until July 15th. Last year, ten finalists were selected from more than 540 submissions! Winners get to present their films to a live audience, and win cash awards. This year's competition will take place on September 21st and 22nd.

"Marche Madness" Concert

Put away the office brackets and office pools, this is not the March Madness that probably first comes to mind. Join the Walnut Creek Concert Band under the direction of Musical Director and Conductor Harvey Benstein and Assistant Conductor Lauren Gibson for the Band's spring concert on March 19, 2019, at 7:30 p.m. The "Marche Madness" concert will feature a variety of marches as they dive into the evolution of that form of music, which is much more than the typical John Phillips Sousa marches. Find out details about the show and purchase tickets at the Leshner Center for the Arts website.

Take a Walk into History!

Every 2nd Saturday from March through October, the Walnut Creek Historical Society offers an easy 90-minute guided walking tour of the downtown area. This walk on City sidewalks brings to life the early days of Walnut Creek and reveals parts of our history hiding in plain sight. The next tours will be on March 9. These tours are free and depart at 9:30 a.m. from the fountain at Liberty Bell Plaza (corner of Broadway and Mt. Diablo Blvd.) A booklet with historic photos of the sites visited may be purchased at the tour for \$5.00. Registration in advance is not required; call 925-935-7871 for details.

10th ANNUAL
 WALNUT CREEK LIBRARY FOUNDATION
AUTHORS GALA
Joie de Vivre
 Saturday, APRIL 27, 2019

For tickets & details, visit wclibrary.org/gala
 or call 925.935.5395

HAVE YOU SEEN AND USED THE CITY'S NEW DOWNTOWN STREET PARKING METERS YET?



The City installed easier to use and read parking meters in January. Meters located on streets in Downtown are City-operated. The old meters had met their useful lifespan and couldn't keep up with rapid changing parking technology. Parking customers also told the City the meters were hard to read in the sun and rain. The new meters are taller, larger and feature a large solar panel that allows for fewer battery replacements. They accept coins, credit cards and Park Mobile payments. Google/Apple payments coming soon. The rates and time limits are the same. The new meters were paid for by the City's Downtown Parking Enterprise and Enhancement Fund which uses all parking revenue to pay for the things we love about the Downtown-landscaping, sidewalk repair and cleaning, the Free Downtown Trolley, Downtown Police and Safety and community events. Learn how to use the new meters before your next visit to Downtown by watching an online video: www.walnut-creek.org/parking

CITY OF
WALNUT CREEK
 1666 North Main Street
 Walnut Creek, CA 94596

PRESORTED
 STANDARD
 U.S. POSTAGE
 PAID
 WALNUT CREEK CA
 PERMIT # 282

ECRWSS

POSTAL CUSTOMER



925-943-5800
www.walnut-creek.org

CITY COUNCIL

Mayor Cindy Silva
 Mayor Pro Tem Loella Haskew
 Matt Francois
 Justin Wedel
 Kevin Wilk

For an appointment, call 925-256-3504

ADMINISTRATIVE STAFF

Dan Buckshi, City Manager
 Fran Robustelli, Assistant City Manager
 Steve Mattas, City Attorney
 Suzie Martinez, City Clerk
 Ronald Cassano, City Treasurer

Administrative Services

Amy Cunningham, Director

Arts & Recreation Department

Kevin Safine, Director

Community & Economic Development

Sandra Meyer, Director

Human Resources

Kelly Guertin, Manager

Police Department

Tom Chaplin, Chief of Police

Public Works

Heather Ballenger, Director

ABOUT THIS NEWSLETTER

The Nutshell Newsletter is published quarterly. For questions and comments, contact editor Betsy Burkhart, 925-943-5895 or burkhart@walnut-creek.org

FOLLOW US ON SOCIAL MEDIA!



facebook.com/cityofwalnutcreek
twitter.com/walnutcreekgov

