

CENTRE POINTE SIGN PROGRAM
WALNUT CREEK, CALIFORNIA

NOVEMBER 2016



CITY OF WALNUT CREEK
Community & Economic Development

APPROVED PLAN

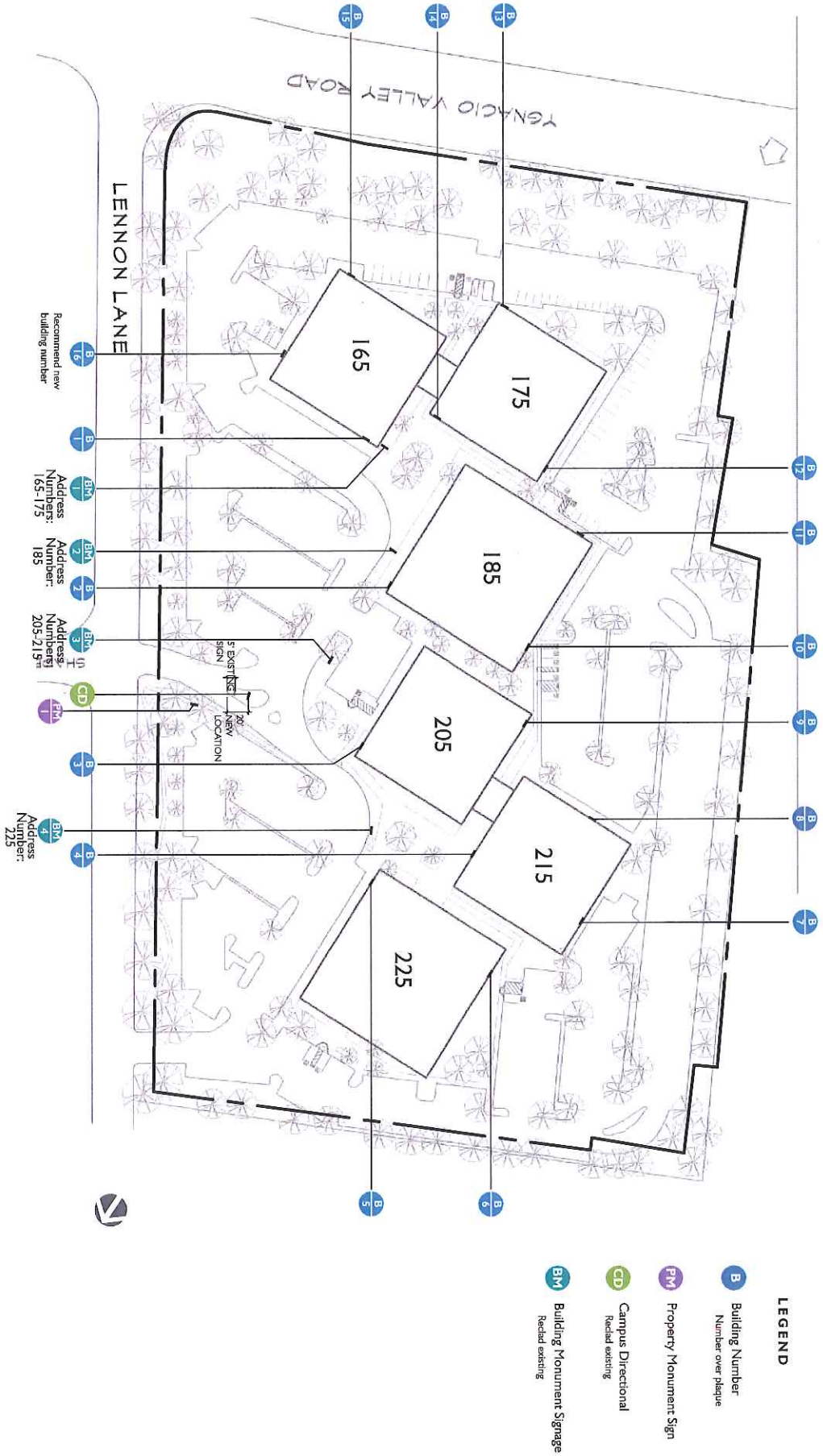
Exhibit A

- Planning Manager
- Zoning Administrator
- Design Review Commission
- Planning Commission
- City Council

Resolution Number: 2977

Date Approved: 12/21/16

Permit Number: _____



Font

CENTRE POINTE

GT - Twentieth Century

Font - Numbers

1234567890

AvanteGarde - Demi

Signage Colors



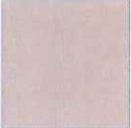
SW 6508
Aluminum Panels



SW 6509
Fabricated Aluminum

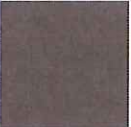


Pantone
Warm Gray 11U
Cut Aluminum Panel

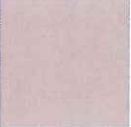


Pantone
Warm Gray 4U
Graphic Background

Architectural Colors



Warm Gray
BM 2134-20



Warm Gray
BM 2137-40

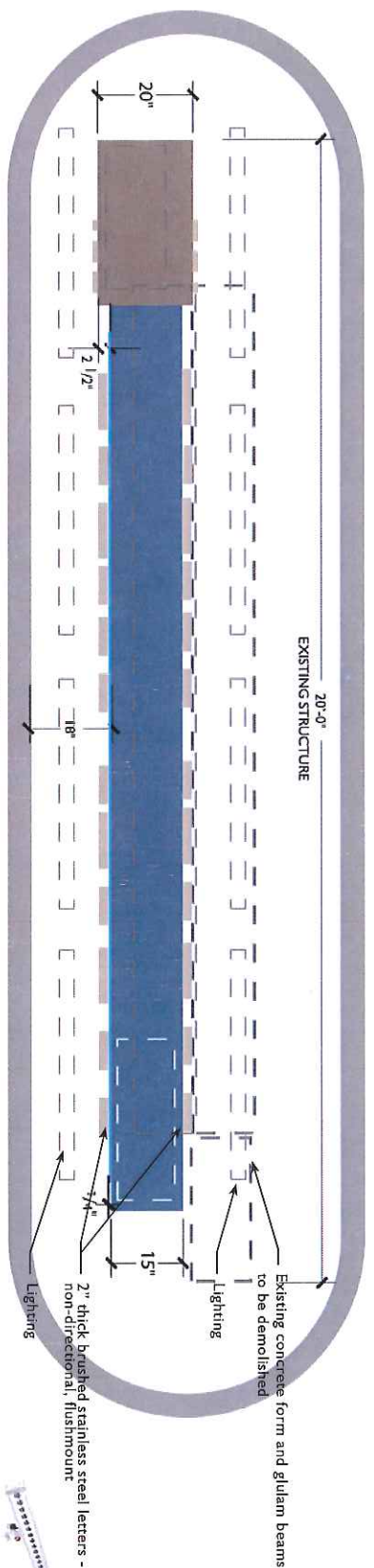
Materials

Painted Metal

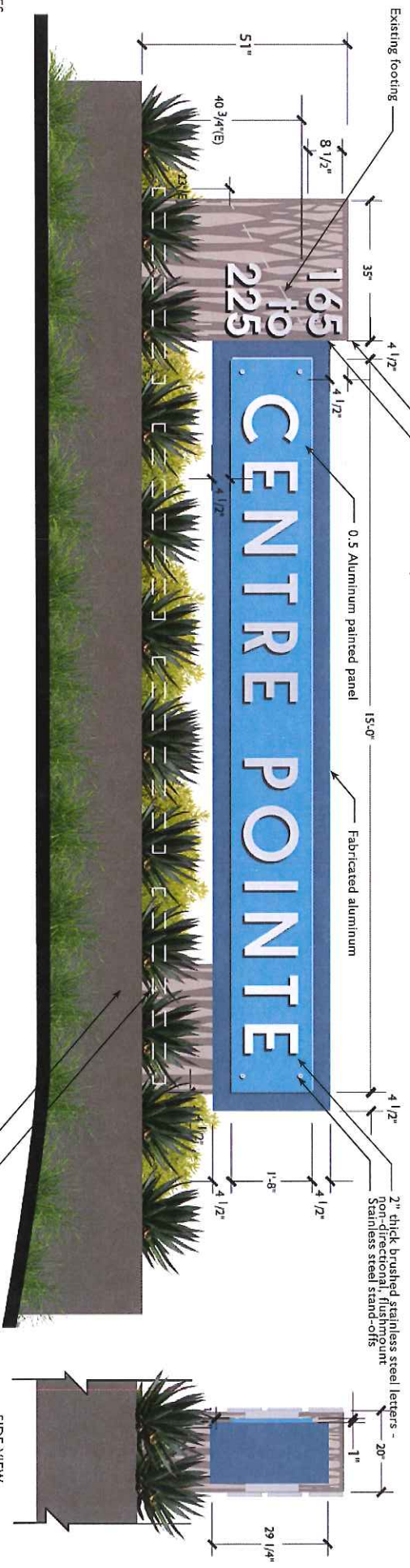
Brushed Stainless Steel Letters, Non-Directional



FRONT VIEW
SIGNA PROPERTY MONUMENT SIGNAGE



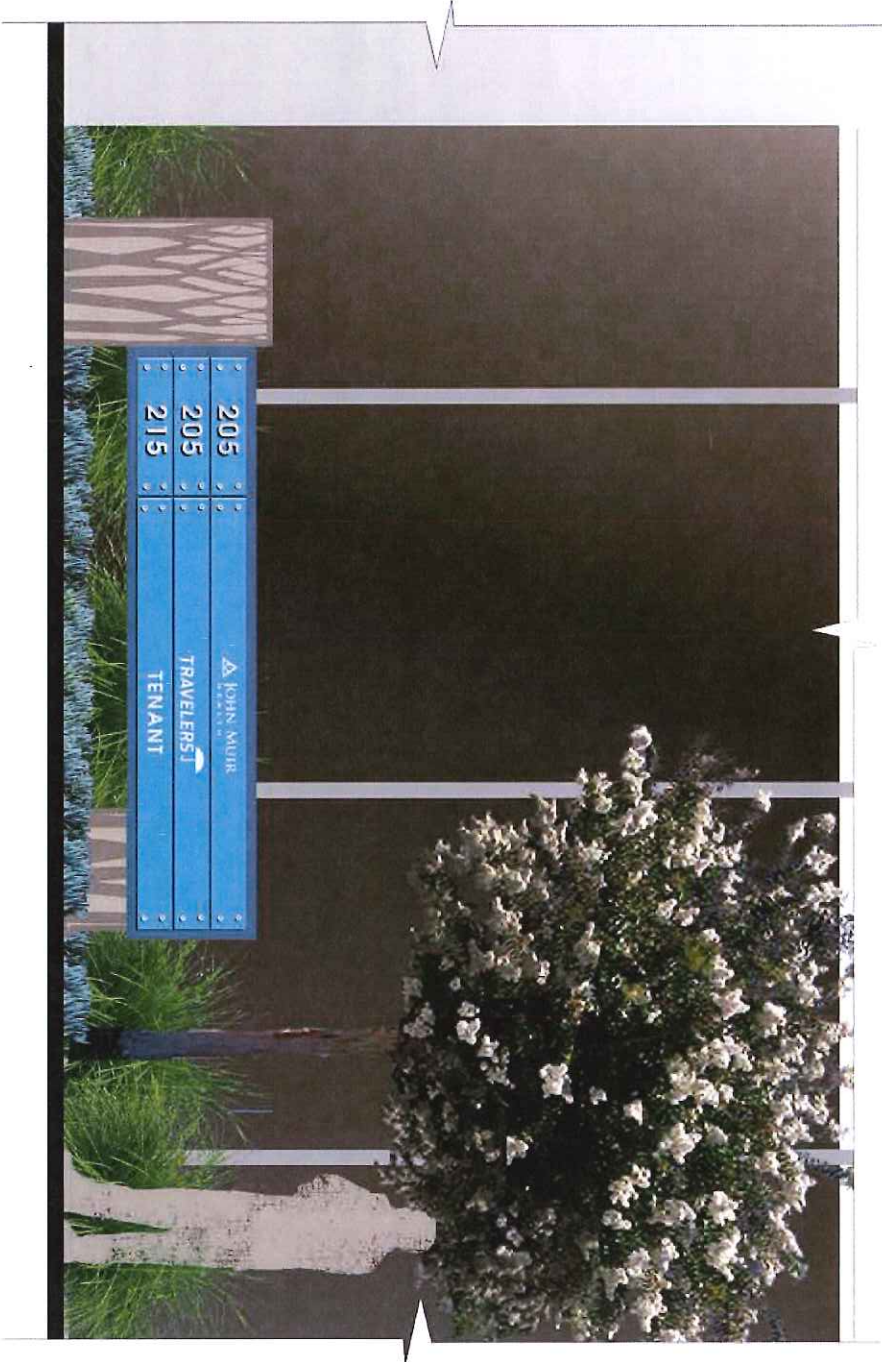
Four 4ft. LED Wall Washer with 45° Beam Angle HTR™ Lighting SKU-WW-1240LED-W-45-UL



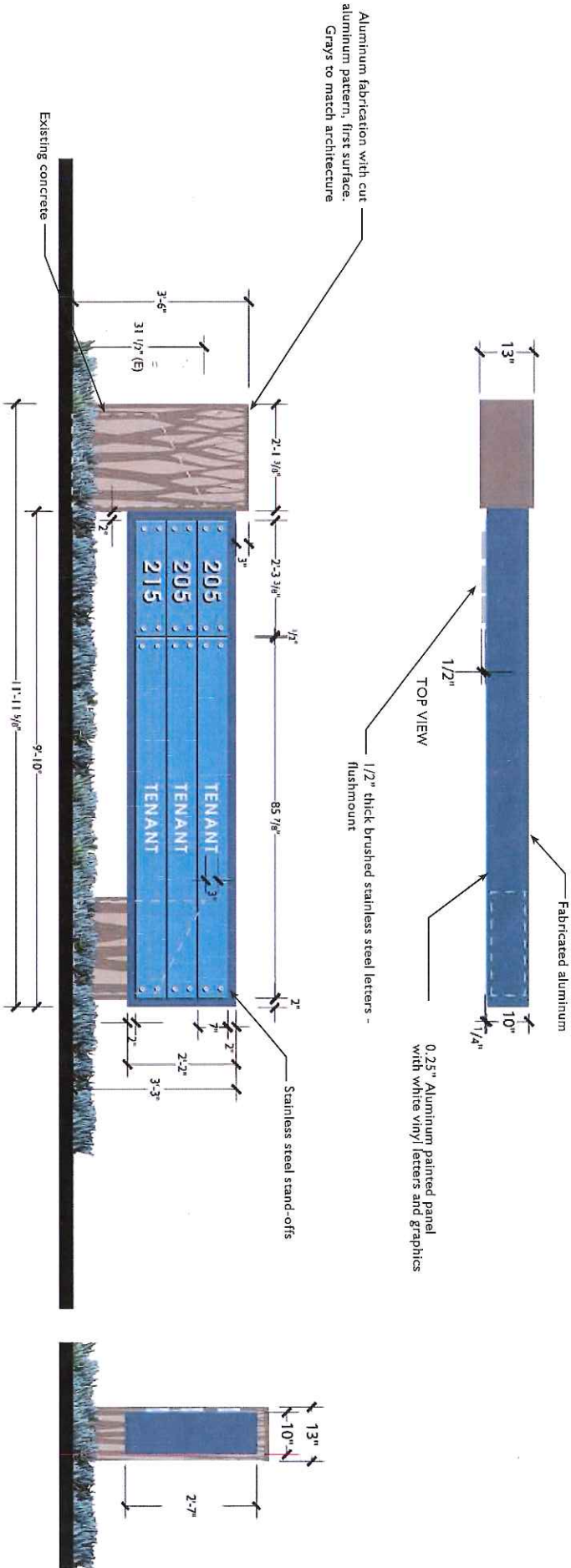
- NOTES
1. EXISTING SIGN TO BE RETROFITTED. EXISTING GLULAM TO BE REMOVED.
 2. 25 SQ. FT. SIGN AREA.
 3. PLANTING TO BE AGAVES AND SEDUMS - SEE LANDSCAPE PLAN
 4. DOUBLE SIDED

FRONT VIEW

PROPERTY MONUMENT SIGNAGE



FRONT VIEW
 BM BUILDING MONUMENT SIGN

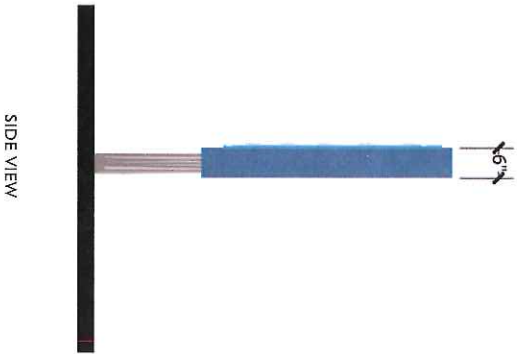
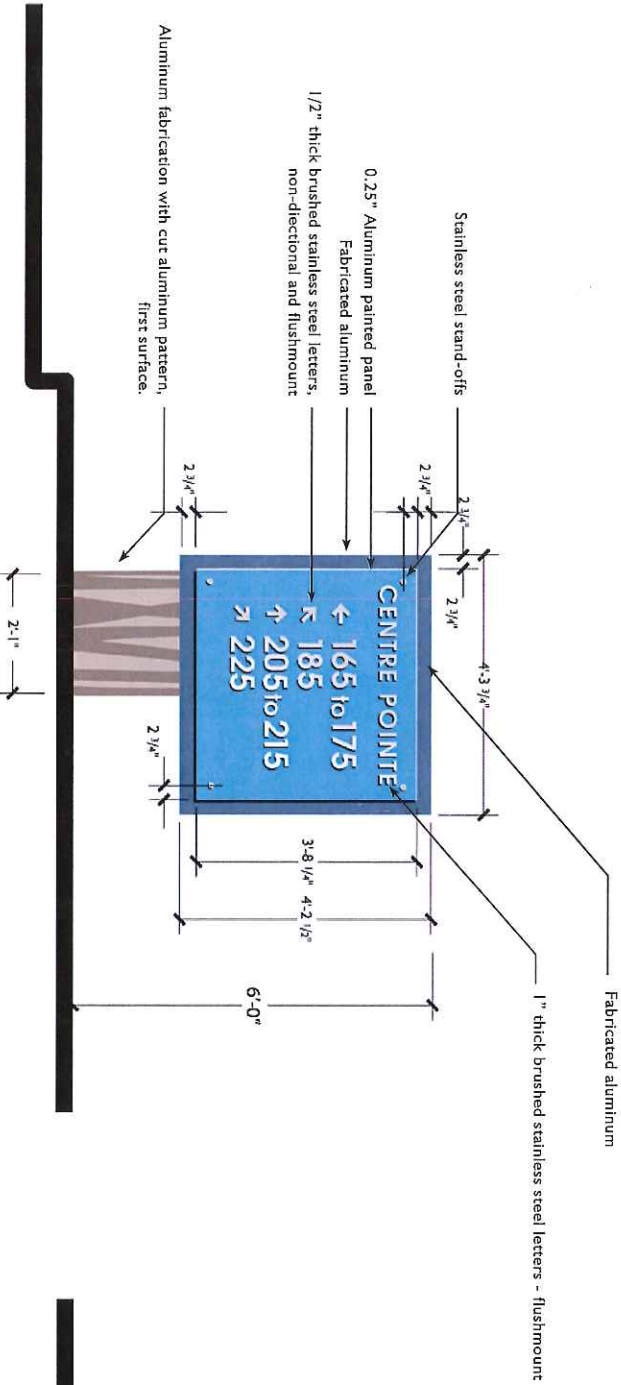


- NOTES
1. EXISTING SIGN TO BE RETROFITTED. CONCRETE FORMS AND FOOTINGS TO REMAIN.
 2. ALUMINUM PAINTED PANELS WILL BE PAINTED BOTH SIDES AND CAN BE FLIPPED ONCE FOR TENANT CHANGE-OUT.
 3. SINGLE SIDED.
 4. 13 1/2 sq. ft. SIGN AREA, EACH SIGN, TENANT LETTERS- TOTAL OF 4 SIGNS.

* Tenant identification lettering shall not exceed 4-inches in height on each individual panel

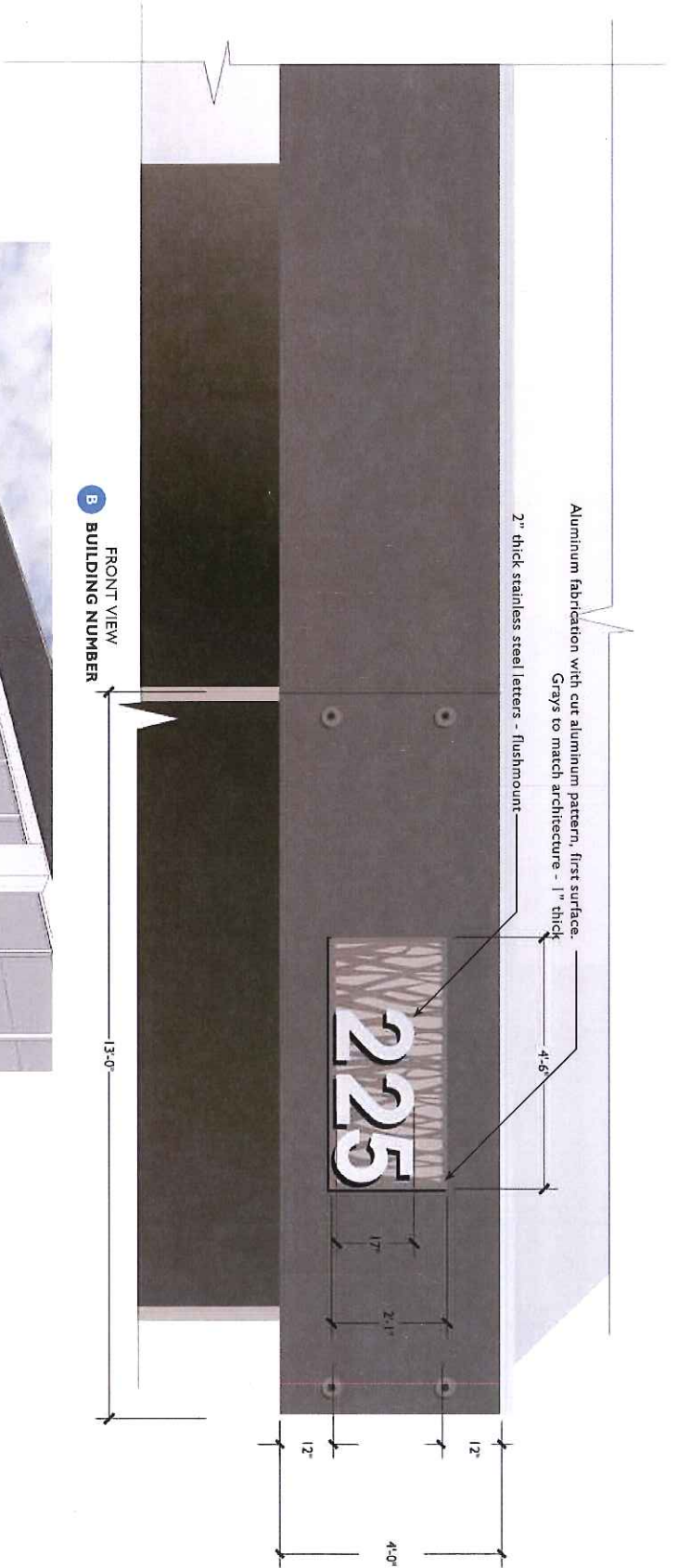


FRONT VIEW
CD CAMPUS DIRECTIONAL



CD CAMPUS DIRECTIONAL

- NOTES
1. EXISTING SIGN TO BE RETROFITTED. CONCRETE FORMS AND FOOTINGS TO REMAIN.
 2. ALUMINUM PAINTED PANELS WILL BE PAINTED BOTH SIDES AND CAN BE FLIPPED ONCE FOR TENANT CHANGE-OUT.
 3. FOR IMPROVED VISIBILITY, LOCATION HAS MOVED FROM EXISTING SIGN LOCATION - SEE PAGE 2.
 4. 14 sq. ft. SIGN AREA



PERSPECTIVE VIEW

GENERAL REQUIREMENTS

1.01 OWNER/DESIGNER PROVIDED INFORMATION

A. DESIGN DOCUMENTS

1. Gates + Associates will provide to the fabricator design intent drawings and location plans.
2. Fabricators will be provided with all documentation as electronic files.
3. Design artwork for production purposed will be provided in Adobe Illustrator native file format. Production art files other than Illustrator files will be provided in their native formats. Gates + Associates will not provide file translation services for the Sign Fabricator.
4. It is the fabricator's responsibility to insure they have obtained all of the documentations described above prior to beginning work on this project.

1.02 WORK INCLUDED

A. SCOPE

1. The scope of work shall include the signs and graphic amenities described in the design intent documents, the location plans and the following specifications:
2. The Sign Fabricator shall be required to provide Gates + Associates with construction drawings (Shop Drawings) for each sign type unless otherwise noted or agreed to by Gates + Associates.
3. The documentation drawings provided by Gates to the Owner and Sign Fabricator are for design intent purposes only and are not to be used for construction and/or fabrication without shop drawings, patterns, prototypes, mock-ups, engineering etc., prepared by the fabricator and having been approved by Gates.
4. The Sign Fabricator shall be responsible for submitting signed and sealed structural and electrical engineering drawings for all signs requiring engineering or U.L. approval.
5. The Sign Fabricator shall be responsible for reviewing Architectural, Landscaping, Civil, Structural, Electrical and Lighting drawings along with related specifications for layout and location of all related items, necessary connections to work of other trades and potential installation conflicts.
6. The Sign Fabricator is responsible for performing proper field verification to ensure the accurate completion of all work.
7. The Sign Fabricator shall provide all work including all equipment, appliances, labor, materials, related electrical work, transportation and all operations required for complete fabrication and installation of all signage and graphic items detailed on drawings.
8. Unless otherwise agreed to, the Sign Fabricator shall make application for, obtain and pay for all necessary municipal and/or local inspections, applicable taxes (including sales tax, if any) and permits as may be required.

1.03 GENERAL INSTRUCTION

1. The Sign Fabricator shall be responsible for the engineering, fabrication, coordination of subcontractors, installation and service of the signs as per the design intent drawings specifications.