

SHADELANDS

SportsMall



MASTER SIGN PROGRAM

OCTOBER 26, 2016

MASTER SIGN PROGRAM

Prepared For:

 Real Estate Investment - Development - Management

Hall Equities Group
 1855 Olympic Blvd.,
 Suite 300
 Walnut Creek, CA 94596
 Phone: (925) 933-4000
 Fax: (925) 933-4150


DSIGNART
 3428 Hillcrest Ave. Suite 150
 Antioch, CA 94531
 T. 925.933.9677
 F. 925.933.9784
 E. Info@dsignart.com
 http://www.dsignart.com

Phase:
 Conceptual
 Design Development
 Approved Plan

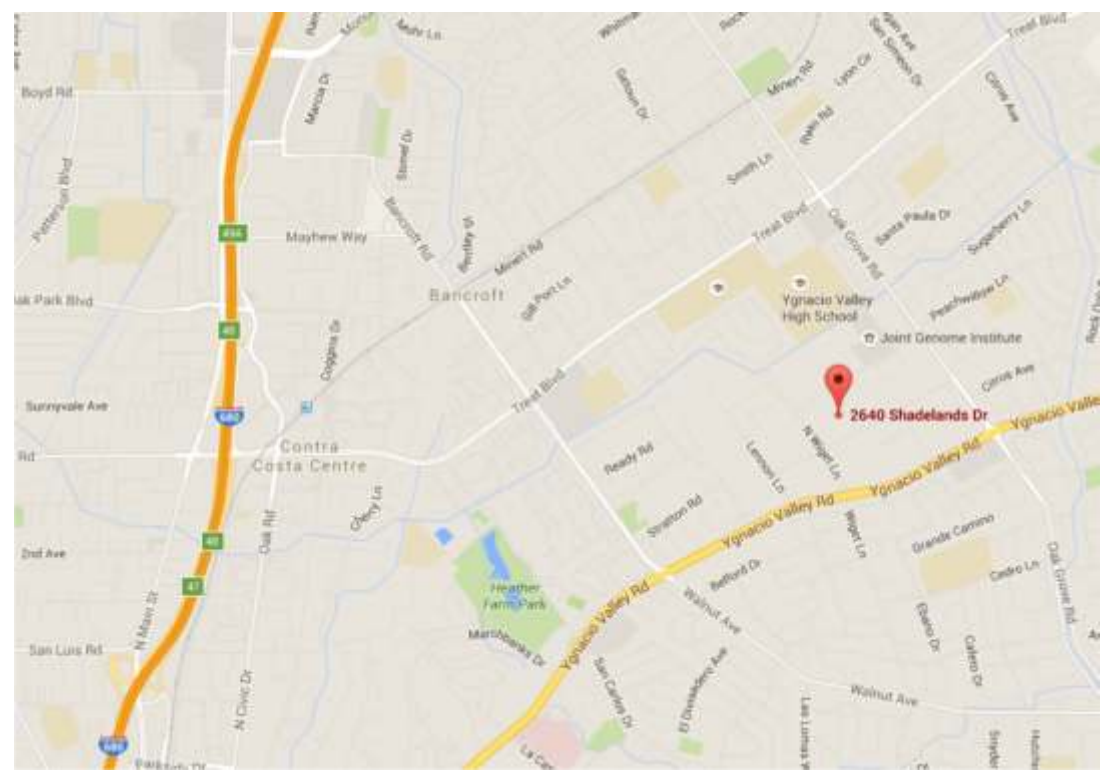
Date: 4-29-16
Drawn by: J.H./S.A.
Scale: As Noted
Dwg #:
Revision: 10-26-16
Title:
Page #: **G.1**

Table of Content

Page	Description
G.1	Table of Content, Aerial View, Vicinity Map
G.2	1. General Criteria
G.2	1.1 Purpose
G.2	1.2 Design Intent
G.2	1.3 Approvals and Permit
G.2	1.4 General Requirements
G.2	1.5 Administration
G.2	1.6 Prohibited Signs
G.2	1.7 Temporary Signs
G.3	2. Free Standing Signage
G.3	2.1 Free-Standing Signage Plan
G.4	2.2 Type A: Sportsmall & Tenants Identification Monument
G.5	2.3 Type C: Sportsmall Wayfinding Signage
G.6	3. Wall Signage Plan
G.7	3.1 Wall Signage - South Elevation
G.8	3.2 Wall Signage - North Elevation
G.9	3.3 Wall Signage - East Elevation
G.10	3.4 Wall Signage - West Elevation
G.11	4. Sign Types
G.11	4.1 Sign Type H - Tenant Identification Wall Sign - The Ultimate Fieldhouse
G.11	4.2 Sign Type I - Tenant Identification - Blade Sign- The ultimate Fieldhouse
G.12	4.3 Sign Type D - Sportsmall Entrance Identification Signs
G.13	4.4 Sign Type F - Sportsmall Electronic LED Message Board
G.14	4.5 Sign Type G - Tenant Identification-Canopy Sign-Copa Real
G.15	4.6 Sign Type H - Tenant Identification- Wall Sign-Encore Gym
G.16	4.7 Sign Type H - Tenant Identification-Wall Sign-Fueling Station
G.17	4.8 Sign Type H - Tenant Identification-Wall Sign (OPTION A)
G.18	4.9 Sign Type H - Tenant Identification-Wall Sign (OPTION B)



AERIAL VIEW



VICINITY MAP

1. GENERAL CRITERIA:

1.1 Purpose:

The Master Sign Program has been established for the purpose of assuring a functional, coordinated graphics program that will provide project and Tenants identification, while encouraging creativity, compatibility, and enhancement of the project in the City of Walnut Creek.

1.2 Design Intent:

These guidelines are designed to complement architectural elements of the buildings and coordinate the type, placement, and physical dimensions of signs within the project thereby appearing as an integral part of the project and not appearing as an after thought.

In cases not covered by Master Sign Program, the prevailing criteria will follow the City of Walnut Creek Sign Ordinance in force.

1.3 Approvals and Permit:

- a) Each Tenant will be provided with a copy of the Master Sign Program as their first step in obtaining signage. Any new or proposed signage should comply with these signage guidelines.
- b) Each Tenant is required to submit to Landlord for approval before fabrication, at least four (4) copies of detailed design drawings indicating the location, size, copy layout, colors, materials, finishes, and method of attachment.
- c) This Master Sign Program shall not imply that any City approval will be automatically granted. Tenant is solely responsible for obtaining any and all required approvals and permits from the City of Walnut Creek.
- d) All permits for signs and their installation shall be obtained by Tenant, at Tenant's sole expense prior to installation.

1.4 General Requirements:

- a) All Tenant signs shall be constructed, installed and maintained at Tenant's sole expense.
- b) All signs shall be designed consistent with the City of Walnut Creek's adopted sign design guidelines for signs.
- c) Tenant shall be responsible for fulfillment of all governmental code requirements and specifications, including but not limited to the City of Walnut Creek, Uniform Building and Electric Code.
- d) All signs shall be reviewed for compliance with the Master Sign Program, as well as overall design quality. Approval or disapproval of sign submittals based on aesthetics of design shall remain the right of Landlord.
- e) All exterior signs shall be secured by non-corrosive fasteners
- f) All exposed fasteners to be painted to match the background surface.
- g) All penetrations of the building structure by Tenant's sign contractor required for sign installation shall be neatly sealed and watertight.

- h) All identification labels shall be concealed, except where required by code.
- l) Sign contractor shall repair any damage caused by their work. Damage to structure that is not repaired by the sign contractor shall become the Tenant's responsibility to correct.
- j) Tenant shall be fully responsible for the operation of their sign contractor, and shall indemnify, defend and hold the Landlord harmless from damages or liabilities on account thereof.
- k) Sign surfaces that are intended to be flat shall be without oil canning, or other visual deformities.
- l) All exposed welded seams end joints shall be finished smooth.
- m) Signs shall not cover or interrupt major architectural features.

1.5 Administration:

- a) The sign contractor shall carry workman's compensation and public liability insurance against all damage suffered or performed against any and all persons or property while engaged in the construction or erection of sign.
- b) Sign contractors shall be advised (by Tenant) that no substitutes will be accepted whatsoever unless so indicated in specification and approved by the Landlord. Any deviation from these specifications may result in the rejection of the sign by the Landlord.
- c) In the event any conflict in the interpretation of these guidelines cannot be satisfactorily resolved, the Landlord decision shall be final and binding upon the Tenant.

1.6 Prohibited Signs:

- a) No sign shall be installed, relocated or maintained so as to prevent entry or exit out of any door.
- b) No sign shall create a safety hazard by obstructing view of pedestrian and vehicular traffic.
- c) No sign shall be located within a required easement, unless an encroachment permit has been authorized by the affected utilities.
- d) No sign shall obstruct access to fire hydrants, fire department connections, or fire department access roads.
- e) Signs, which audibly advertise, identify or provide direction to a use or activity, are prohibited.
- f) It is unlawful for any Tenant to exhibit, post or display or cause to be exhibited, posted or displayed upon any sign, anything of an obscene, indecent, or of immoral nature or unlawful activity.
- g) Business slogans, phrases, emails of phone numbers are not permitted as sign copy. Sign copy may include business name, service rendered, principle brand names or classification of merchandise for sale.

1.7 Temporary Signs:

All temporary signs shall be approved by Landlord and the City of Walnut Creek and shall be consistent with the provisions (Sections 10-8.108.1.(a) Business Opening and 10-8.108.1.(e) Temporary Banners) in the City of Walnut Creek Sign Ordinance. Any required fees shall be paid by the Tenant.

MASTER SIGN PROGRAM

Prepared For:



Hall Equities Group
1855 Olympic Blvd.,
Suite 300
Walnut Creek, CA 94596
Phone: (925) 933-4000
Fax: (925) 933-4150



DSIGNART

3428 Hillcrest Ave. Suite 150
Antioch, CA 94531
T. 925.933.9677
F. 925.933.9784
E. Info@dsignart.com
http://www.dsignart.com

Phase:

- Conceptual
 Design Development
 Approved Plan

Date: 4-29-16

Drawn by: J.H./S.A.

Scale: As Noted

Dwg #:

Revision: 10-26-16

Title:

Page #: **G.2**

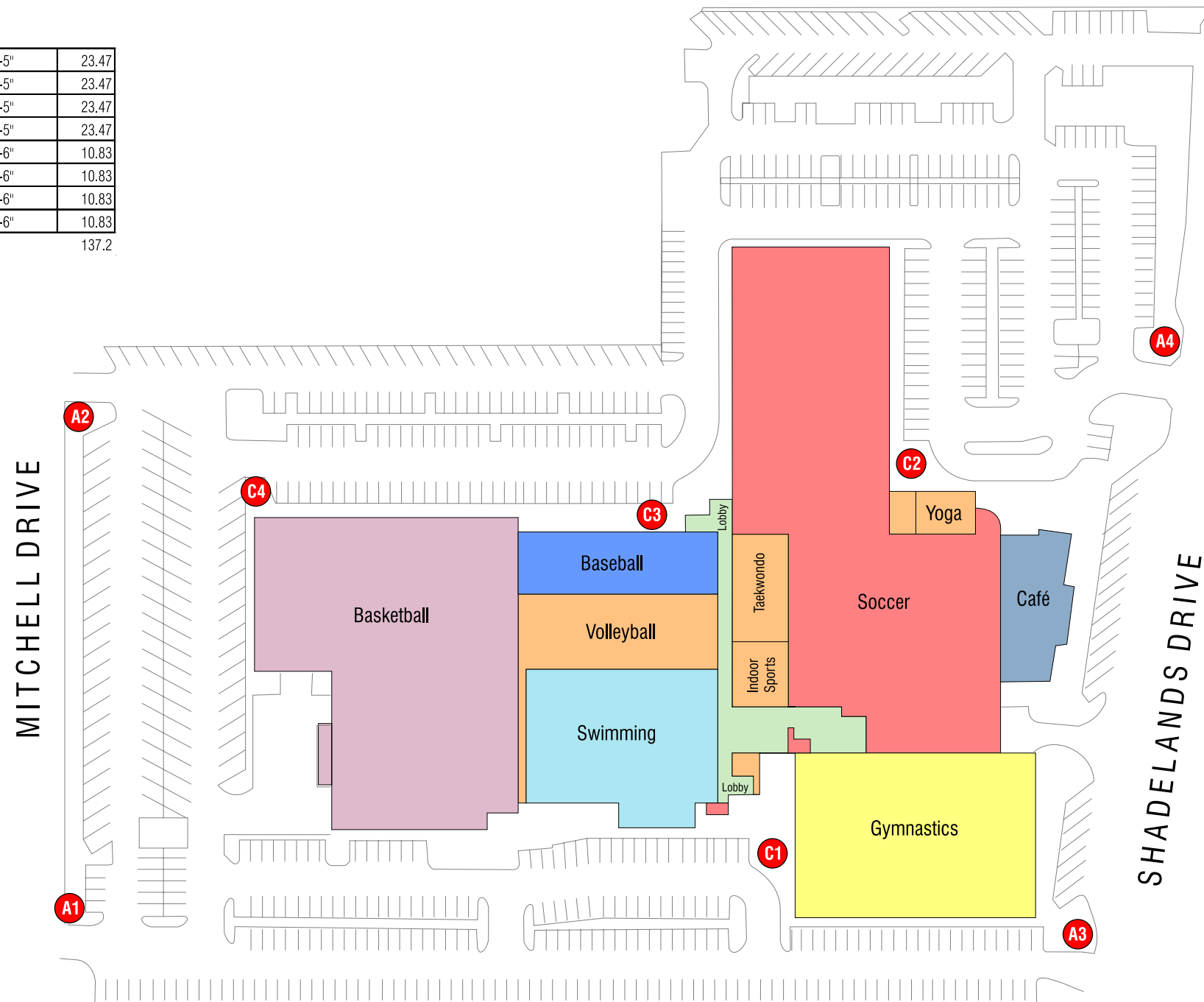
2. FREE-STANDING SIGNAGE

2.1 Free-Standing Signage Plan

- A** Sportsmall & Tenant Identification Monument
- B** Sportsmall & Tenant Identification Monument
- C** Wayfinding Signage

A1	Sportsmall & Tenant Identification Monument	4'-4" x 5'-5"	23.47
A2	Sportsmall & Tenant Identification Monument	4'-4" x 5'-5"	23.47
A3	Sportsmall & Tenant Identification Monument	4'-4" x 5'-5"	23.47
A4	Sportsmall & Tenant Identification Monument	4'-4" x 5'-5"	23.47
C1	Sportsmall Wayfinding Signs	4'-4" x 2'-6"	10.83
C2	Sportsmall Wayfinding Signs	4'-4" x 2'-6"	10.83
C3	Sportsmall Wayfinding Signs	4'-4" x 2'-6"	10.83
C4	Sportsmall Wayfinding Signs	4'-4" x 2'-6"	10.83

137.2



Prepared For:



Hall Equities Group
1855 Olympic Blvd.,
Suite 300
Walnut Creek, CA 94596
Phone: (925) 933-4000
Fax: (925) 933-4150



DSIGNART

3428 Hillcrest Ave. Suite 150
Antioch, CA 94531
T. 925.933.9677
F. 925.933.9784
E. Info@dsignart.com
http://www.dsignart.com

Phase:

- Conceptual
- Design Development
- Approved Plan

Date: 4-29-16

Drawn by: J.H./S.A.

Scale: As Noted

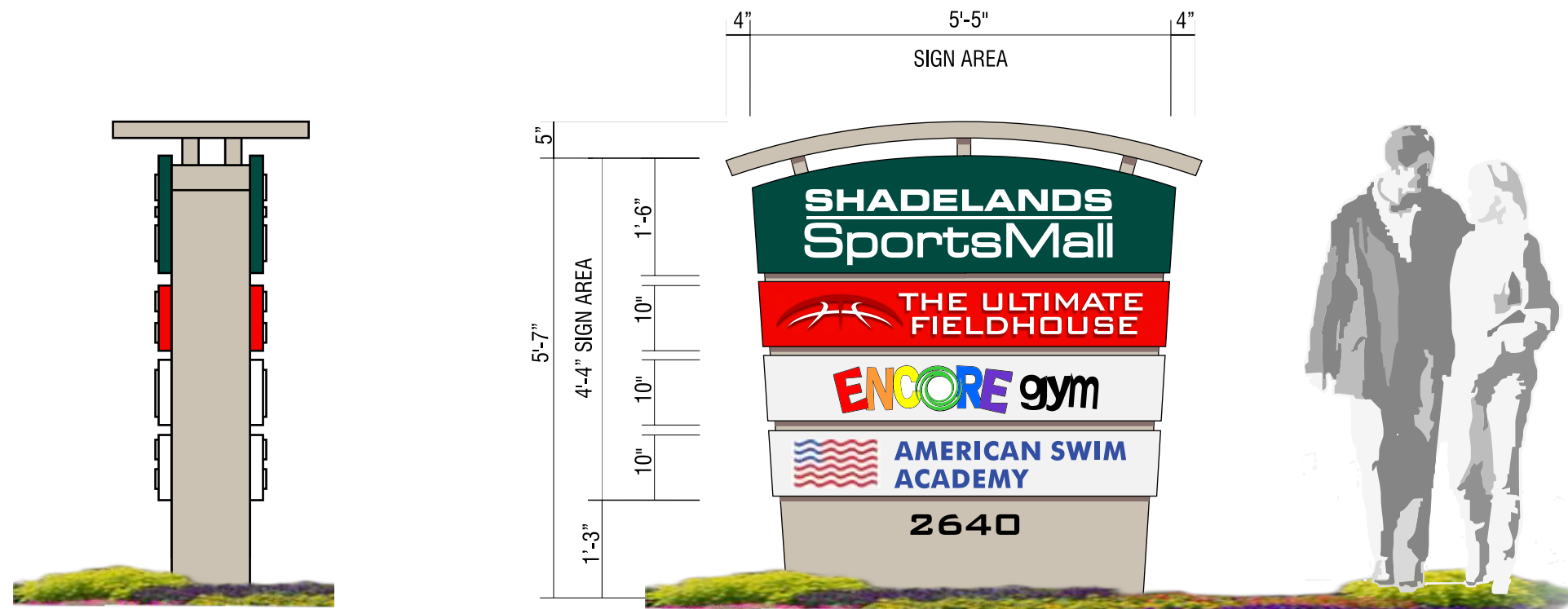
Dwg #:

Revision: 10-26-16

Title:

Page #: **G.3**

2.2 TYPE A: Sportsmall & Tenant Identification Monument



A1 A2 A3 A4

SPORTSMALL & TENANT IDENTIFICATION MONUMENT

SCALE 1/2" = 1'-0"

- QUANTITY: FOUR (4)
- CONSTRUCTION: DOUBLE FACE FABRICATED ALUMINUM, PAINTED / TEXCOATED FINISH
- SPORTSMALL: 1/2" PUSH-THRU LOGO WITH TRANSLUCENT VINYL FACES. BACKGROUND OPAQUE
- TENANT LOGO: 1/2" PUSH-THRU LOGO WITH TRANSLUCENT VINYL FACES. BACKGROUND OPAQUE
- ILLUMINATION: OPAQUE BACKGROUND, INTER. ILLUMINATED LTRS./LOGO WITH LED LIGHTING
- ADDRESS: INDIVIDUAL 1/4" THICK PAINTED ACRYLIC NUMBERS

MASTER SIGN PROGRAM

Prepared For:



Hall Equities Group
 1855 Olympic Blvd.,
 Suite 300
 Walnut Creek, CA 94596
 Phone: (925) 933-4000
 Fax: (925) 933-4150



DSIGNART

3428 Hillcrest Ave. Suite 150
 Antioch, CA 94531
 T. 925.933.9677
 F. 925.933.9784
 E. Info@dsignart.com
 http://www.dsignart.com

Phase:

- Conceptual
- Design Development
- Approved Plan

Date: 4-29-16

Drawn by: J.H./S.A.

Scale: As Noted

Dwg #: _____

Revision: 10-26-16

Title: _____

Page #: **G.4**

2.3 TYPE C: Sportsmall Wayfinding Signage



C1 C2 C3 C4

SPORTSMALL WAY FINDING SIGNAGE

SCALE 1/2" = 1'-0"

- QUANTITY: FOUR (4)
- MAIN PANEL: FABRICATED ALUMINUM, PAINTED WHITE SATIN FINISH
- TOP SECTION: CONTOURED SQUARE TUBE FRAMING PAINTED INTERNALLY ILLUMINATED WITH PUSH THROUGH ACRYLIC LOGO
- MAP: DIGITAL PRINTED GRAPHICS
- TENANT LOGO: VINYL GRAPHICS
- ILLUMINATION: NONE

NOTE:
MAP AND TENANT LISTING ARE
FOR PRESENTATION ONLY

**DETAIL ARTWORK WILL BE PROVIDED
FOR REVIEW AND APPROVAL**

**MASTER SIGN
PROGRAM**

Prepared For:



Hall Equities Group
1855 Olympic Blvd.,
Suite 300
Walnut Creek, CA 94596
Phone: (925) 933-4000
Fax: (925) 933-4150



DSIGNART

3428 Hillcrest Ave. Suite 150
Antioch, CA 94531
T. 925.933.9677
F. 925.933.9784
E. Info@dsignart.com
http://www.dsignart.com

Phase:

- Conceptual
- Design Development
- Approved Plan

Date: 4-29-16

Drawn by: J.H./S.A.

Scale: As Noted

Dwg #: _____

Revision: 10-26-16

Title: _____

Page #: **G.5**

MASTER SIGN PROGRAM

Prepared For:



Hall Equities Group
 1855 Olympic Blvd.,
 Suite 300
 Walnut Creek, CA 94596
 Phone: (925) 933-4000
 Fax: (925) 933-4150



DSIGNART

3428 Hillcrest Ave. Suite 150
 Antioch, CA 94531
 T. 925.933.9677
 F. 925.933.9784
 E. Info@dsignart.com
 http://www.dsignart.com

Phase:

- Conceptual
- Design Development
- Approved Plan

Date: 4-29-16

Drawn by: J.H./S.A.

Scale: As Noted

Dwg #:

Revision: 10-26-16

Title:

Page #: **G.6**

3. Wall Signage Plan

- D Sportsmall Entrance Identification Sign**
- F Sportsmall Electronic LED displays**
- G Tenant Identification - Canopy Sign**
- H Tenant Identification - Wall Signs**
- I Tenant Identification - Blade Sign**

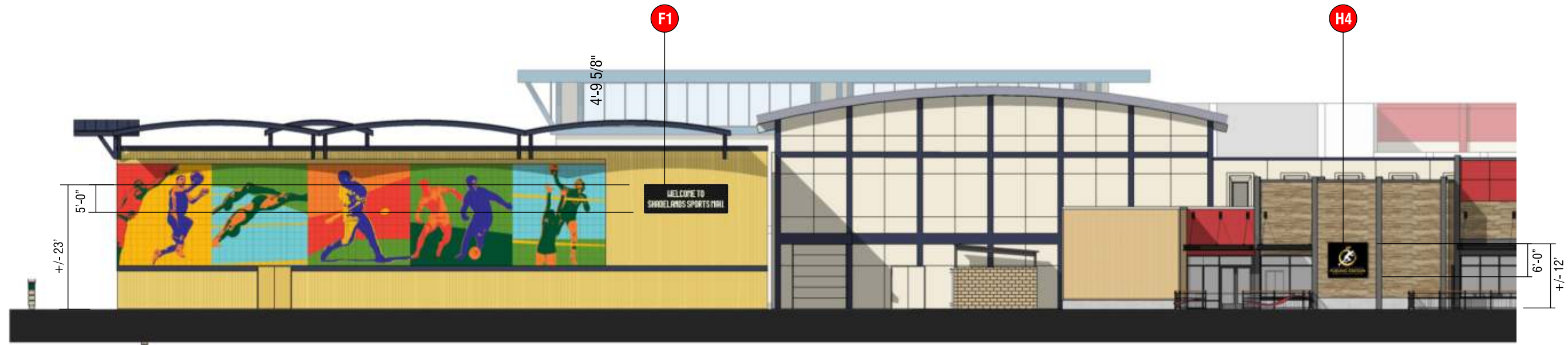
WALL MOUNTED SIGNAGE

ID	Description	Dimensions	Area
D1	Sportsmall Entrance Identification - Entry West	4'-0" x 17'-0"	68
D2	Sportsmall Entrance Identification - Entry East	4'-0" x 17'-0"	68
F1	Sportsmall Full Color Led Board	5'-0" x 15'-0"	75
F1	Sportsmall Full Color Led Board	5'-0" x 15'-0"	75
G	Tenant Identification - Canopy Sign - Copa Real	3'-4" x 17'-0"	56.66
H1	Tenant Identification - Wall Mount - The Ultimate Fieldhouse	6'-0" X 16'-0"	96
H2	Tenant Identification - Wall Mount - The Ultimate Fieldhouse	5'-3" X 16'-0"	100
H3	Tenant Identification - Wall Mount - Encore Gym	4'-0" X 15'-0"	60
H4	Tenant Identification - Wall Mount - Fueling Station	6'-0" X 7'-0"	42
H5	Tenant Identification - Wall Mount - Fueling Station	3'-6" X 4'-0"	14
H6	Tenant Identification - Wall Mount - Yoga	2'-6" X 2'-0"	5
H7	Tenant Identification - Wall Mount - Walnut Creek Soccer Club	2'-6" X 2'-0"	5
I	Tenant Identification - Blade Sign - The Ultimate Fieldhouse	18'-0" X 4'-10"	87

Total 751.66

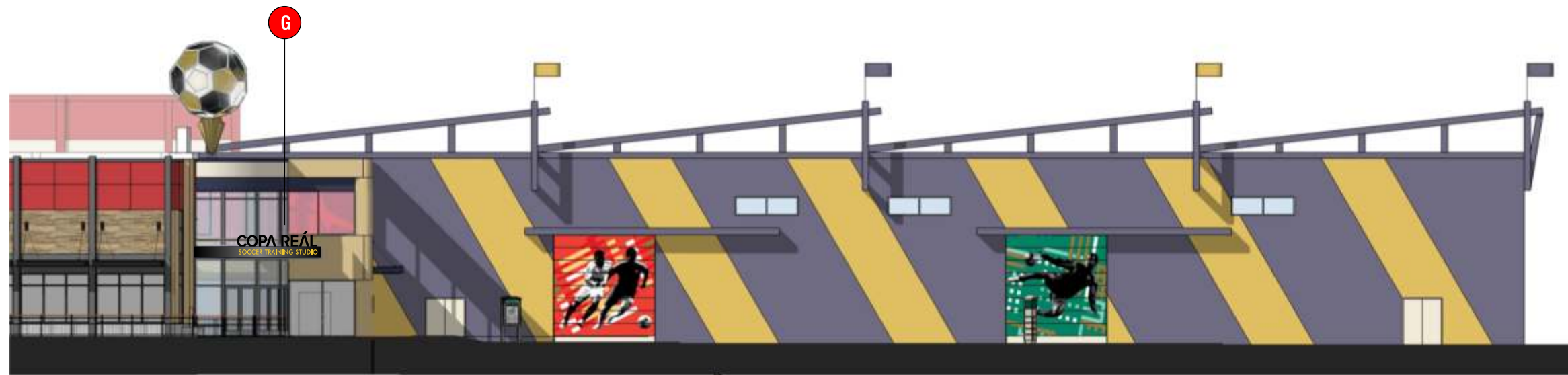


3.1 Wall Signage Elevations



CONCEPTUAL SOUTH ELEVATION - SHADELANDS DRIVE

SCALE 1" = 20'



CONCEPTUAL SOUTH ELEVATION - SHADELANDS DRIVE

SCALE 1" = 20'

MASTER SIGN PROGRAM

Prepared For:



Hall Equities Group
 1855 Olympic Blvd.,
 Suite 300
 Walnut Creek, CA 94596
 Phone: (925) 933-4000
 Fax: (925) 933-4150



DSIGNART

3428 Hillcrest Ave. Suite 150
 Antioch, CA 94531
 T. 925.933.9677
 F. 925.933.9784
 E. Info@dsignart.com
 http://www.dsignart.com

Phase:

- Conceptual
- Design Development
- Approved Plan

Date: 4-29-16

Drawn by: J.H./S.A.

Scale: As Noted

Dwg #: _____

Revision: 10-26-16

Title: _____

Page #: **G.7**

3.2 Wall Signage Elevations

MASTER SIGN PROGRAM

Prepared For:



Hall Equities Group
 1855 Olympic Blvd.,
 Suite 300
 Walnut Creek, CA 94596
 Phone: (925) 933-4000
 Fax: (925) 933-4150



DSIGNART

3428 Hillcrest Ave. Suite 150
 Antioch, CA 94531
 T. 925.933.9677
 F. 925.933.9784
 E. Info@dsignart.com
 http://www.dsignart.com

Phase:

- Conceptual
- Design Development
- Approved Plan

Date: 4-29-16

Drawn by: J.H./S.A.

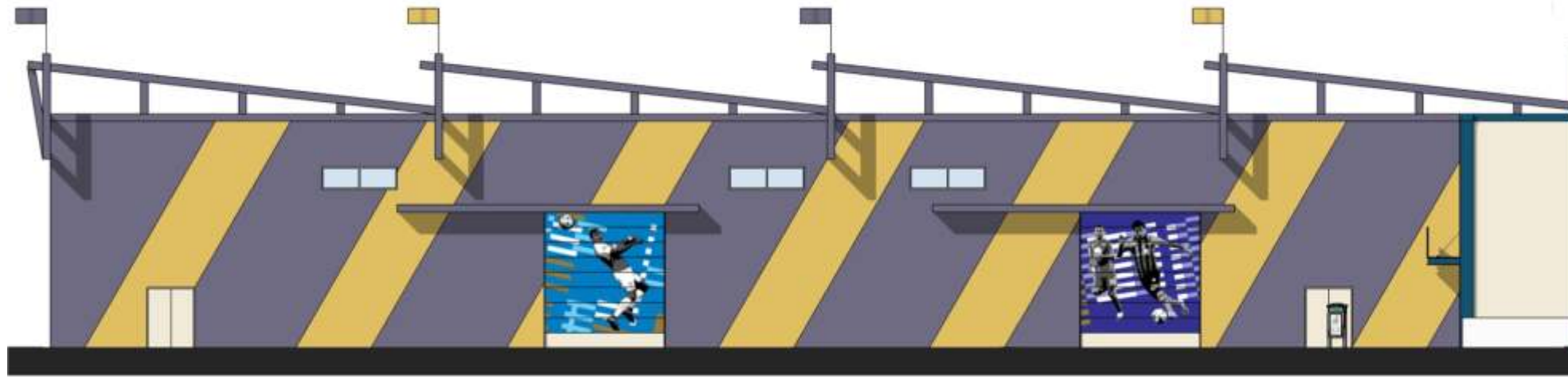
Scale: As Noted

Dwg #:

Revision: 10-26-16

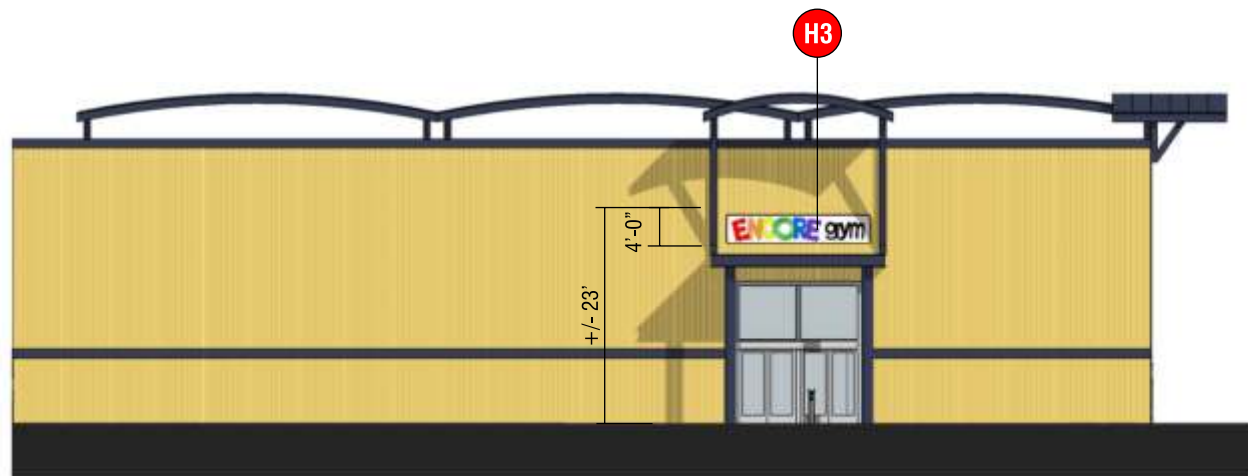
Title:

Page #: **G.8**



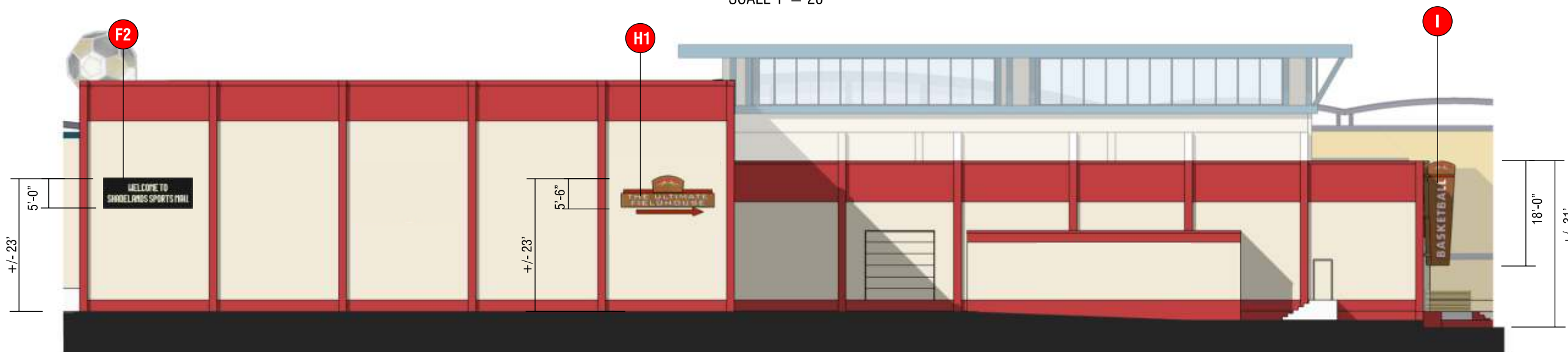
CONCEPTUAL NORTH ELEVATION - SOCCER PLAY FIELD

SCALE 1" = 20'



CONCEPTUAL NORTH ELEVATION - GYMNASTICS

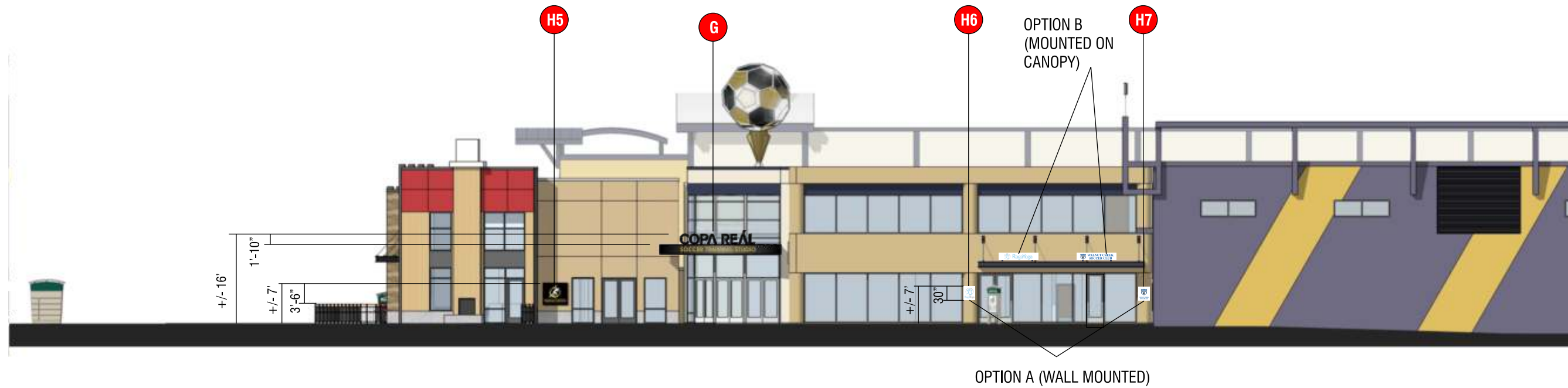
SCALE 1" = 20'



CONCEPTUAL ELEVATION - BASKETBALL

SCALE 1" = 20'

3.3 Wall Signage Elevations



CONCEPTUAL EAST ELEVATION

SCALE 1" = 20'



CONCEPTUAL EAST ELEVATION

SCALE 1" = 20'

MASTER SIGN PROGRAM

Prepared For:



Hall Equities Group
1855 Olympic Blvd.,
Suite 300
Walnut Creek, CA 94596
Phone: (925) 933-4000
Fax: (925) 933-4150



DSIGNART

3428 Hillcrest Ave. Suite 150
Antioch, CA 94531
T. 925.933.9677
F. 925.933.9784
E. Info@dsignart.com
http://www.dsignart.com

Phase:

- Conceptual
- Design Development
- Approved Plan

Date: 4-29-16

Drawn by: J.H./S.A.

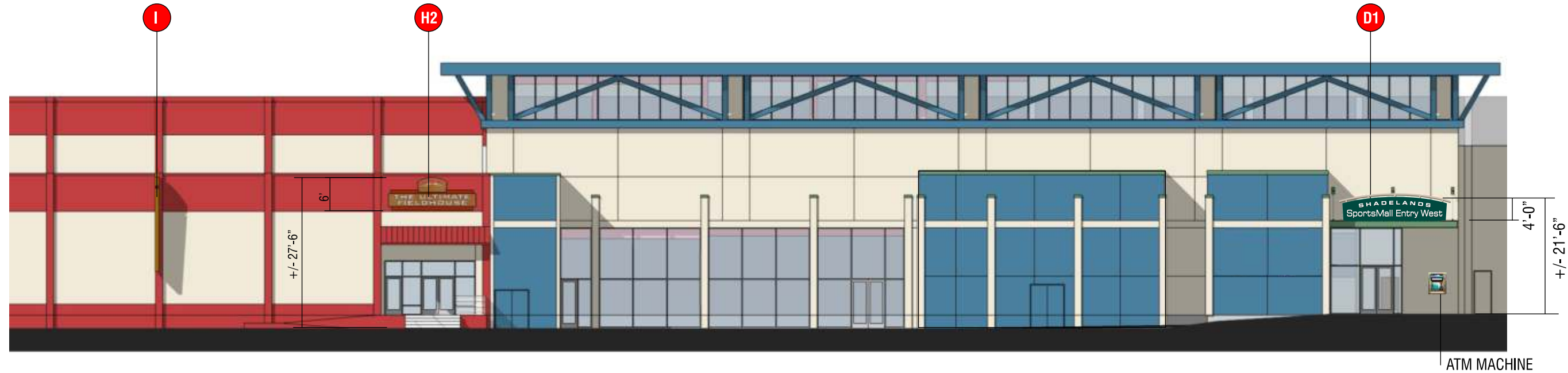
Scale: As Noted

Dwg #:

Revision: 10-26-16

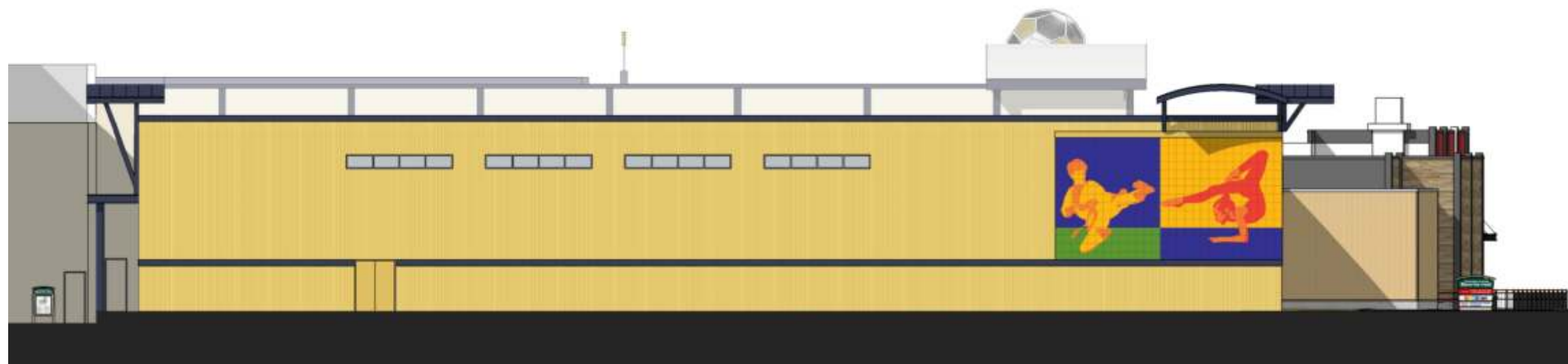
Title:

Page #: **G.9**



CONCEPTUAL WEST ELEVATION

SCALE 1" = 20'



CONCEPTUAL WEST ELEVATION

SCALE 1" = 20'

MASTER SIGN
PROGRAM

Prepared For:



Hall Equities Group
1855 Olympic Blvd.,
Suite 300
Walnut Creek, CA 94596
Phone: (925) 933-4000
Fax: (925) 933-4150



DSIGNART

3428 Hillcrest Ave. Suite 150
Antioch, CA 94531
T. 925.933.9677
F. 925.933.9784
E. Info@dsignart.com
http://www.dsignart.com

Phase:

- Conceptual
- Design Development
- Approved Plan

Date: 4-29-16

Drawn by: J.H./S.A.

Scale: As Noted

Dwg #:

Revision: 10-26-16

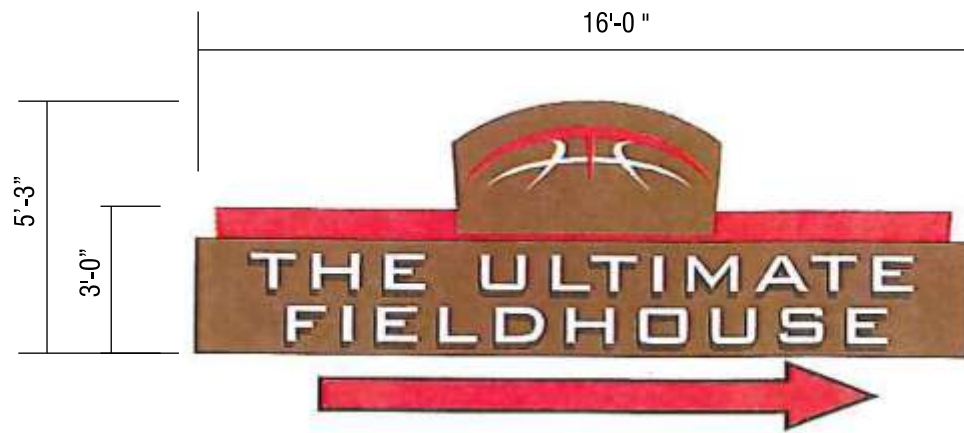
Title:

Page #: **G.10**

4. Sign Types

4.1 Type H - Tenant Identification - Wall Sign

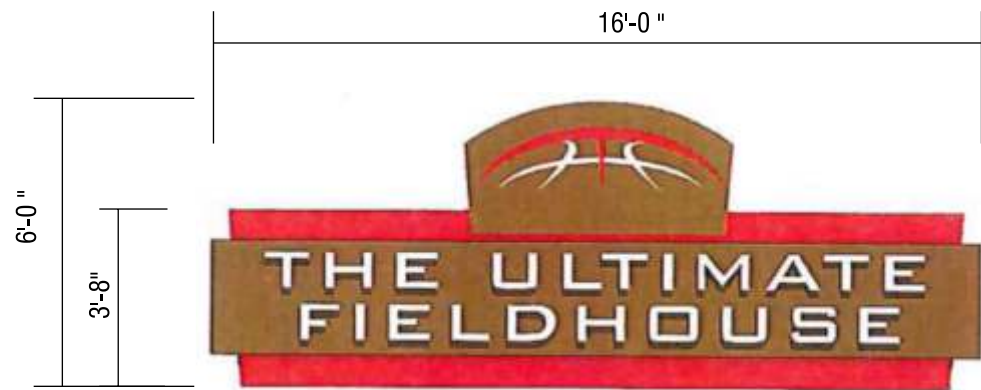
4.2 Type I - Tenant Identification - Blade Sign



H1 TENANT IDENTIFICATION - WALL MOUNT

SCALE 1/4" = 1'-0"

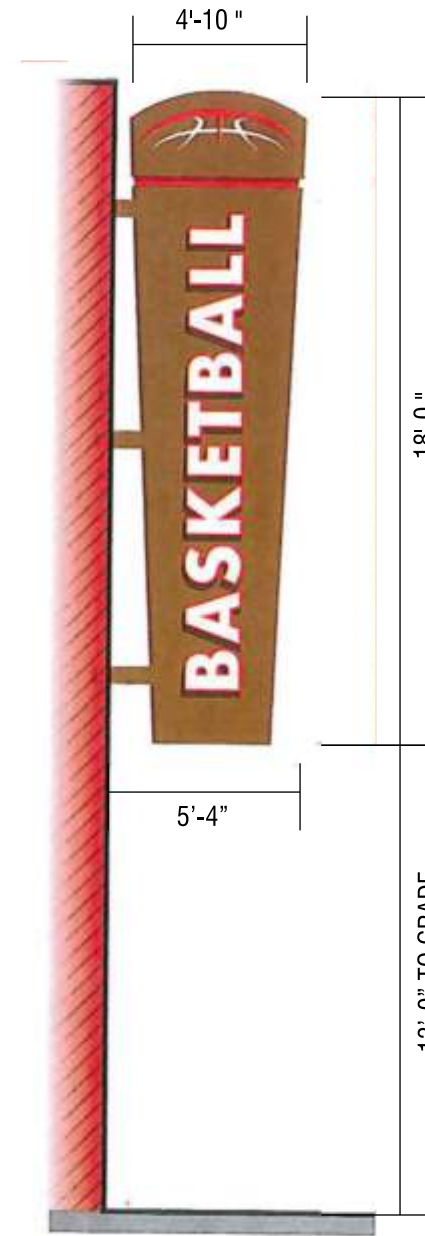
- QUANTITY: ONE (1) EACH
- CONSTRUCTION: FABRICATED ALUMINUM SIGN PANEL, PAINTED, SATIN FINISH
- COPY: 1/2" PUSH-THRU ACRYLIC LETTERS WITH TRANSLUCENT VINYL FACES
- ILLUMINATION: OPAQUE BACKGROUND, INTER. ILLUMINATED LETTERS W/ LED LIGHTING



H2 TENANT IDENTIFICATION - WALL MOUNT

SCALE 1/4" = 1'-0"

- QUANTITY: ONE (1) EACH
- CONSTRUCTION: FABRICATED ALUMINUM SIGN PANEL, PAINTED, SATIN FINISH
- COPY: 1/2" PUSH-THRU ACRYLIC LETTERS WITH TRANSLUCENT VINYL FACES
- ILLUMINATION: OPAQUE BACKGROUND, INTER. ILLUMINATED LETTERS W/ LED LIGHTING



I TENANT IDENTIFICATION - BLADE SIGN

SCALE 3/16" = 1'-0"

- QUANTITY: ONE (1) EACH
- CONSTRUCTION: FABRICATED DOUBLE FACE ALUMINUM BLADE SIGN, PAINTED, SATIN FINISH
- COPY: 1/2" PUSH-THRU ACRYLIC LETTERS WITH TRANSLUCENT VINYL FACES
- ILLUMINATION: OPAQUE BACKGROUND, INTER. ILLUMINATED LETTERS W/ LED LIGHTING

MASTER SIGN PROGRAM

Prepared For:



Hall Equities Group
1855 Olympic Blvd.,
Suite 300
Walnut Creek, CA 94596
Phone: (925) 933-4000
Fax: (925) 933-4150



DSIGNART

3428 Hillcrest Ave. Suite 150
Antioch, CA 94531
T. 925.933.9677
F. 925.933.9784
E. Info@dsignart.com
http://www.dsignart.com

Phase:

- Conceptual
- Design Development
- Approved Plan

Date: 4-29-16

Drawn by: J.H./S.A.

Scale: As Noted

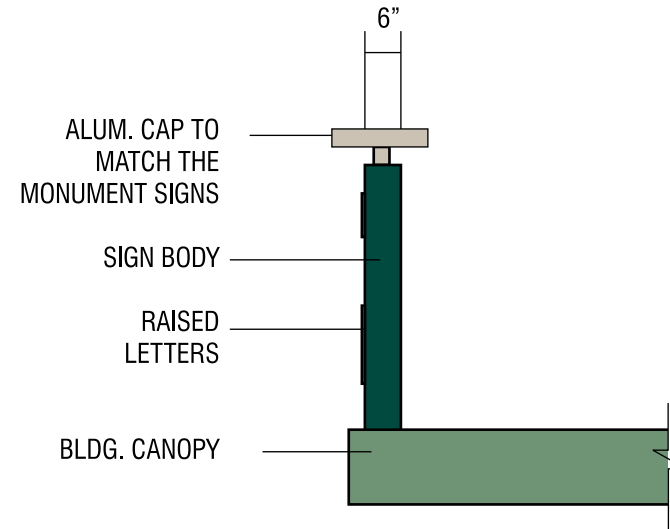
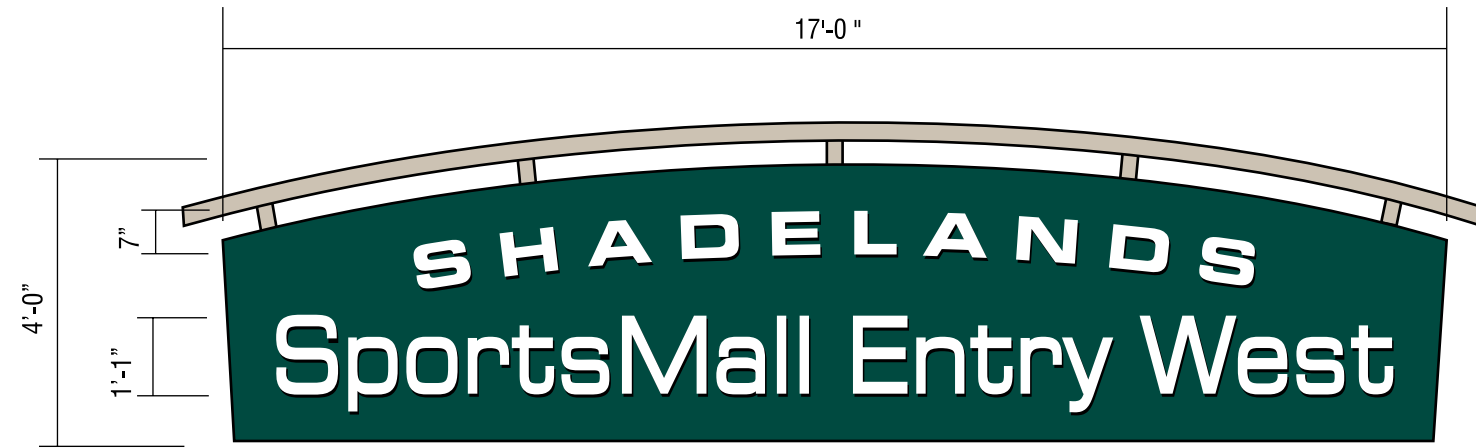
Dwg #: _____

Revision: 10-26-16

Title: _____

Page #: **G.11**

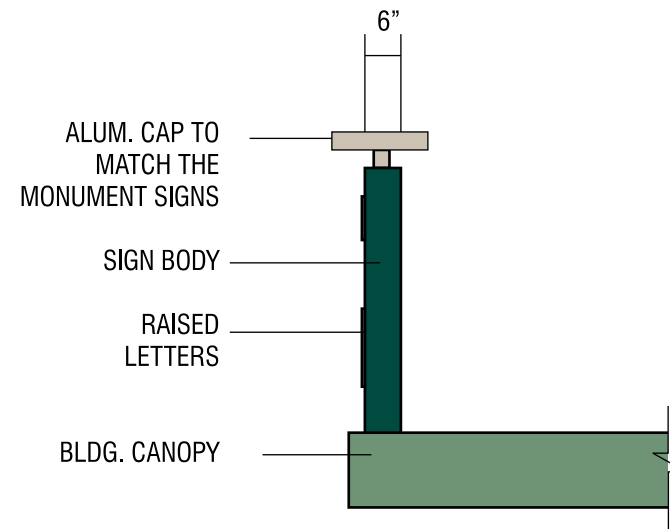
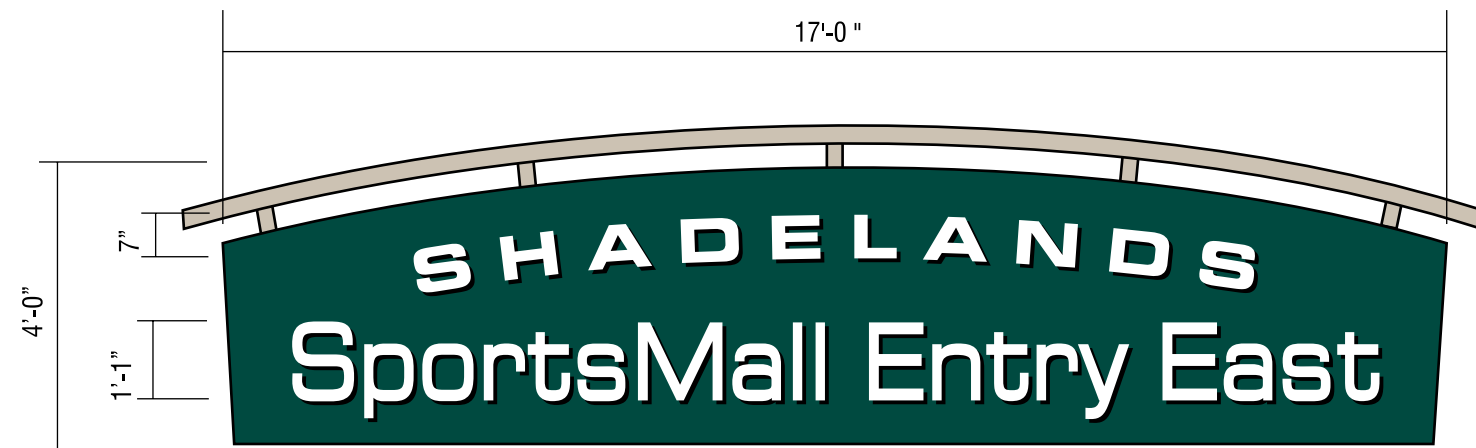
4.3 Type D - SportsMall Entrance Identification Sign



D1 SPORTSMALL ENTRANCE IDENTIFICATION - ENTRY WEST

SCALE 3/8" = 1'-0"

- QUANTITY: ONE (1) EACH
- CONSTRUCTION: FABRICATED ALUMINUM, PAINTED GREEN, SATIN FINISH
- COPY: 1/2" PUSH-THRU LOGO WITH TRANSLUCENT VINYL FACES.
- ILLUMINATION: OPAQUE BACKGROUND, INTER. ILLUMINATED LETTERS W/ LED LIGHTING



D2 SPORTSMALL ENTRANCE IDENTIFICATION - ENTRY EAST

SCALE 3/8" = 1'-0"

- QUANTITY: ONE (1) EACH
- CONSTRUCTION: FABRICATED ALUMINUM, PAINTED GREEN, SATIN FINISH
- COPY: 1/2" PUSH-THRU LOGO WITH TRANSLUCENT VINYL FACES.
- ILLUMINATION: OPAQUE BACKGROUND, INTER. ILLUMINATED LETTERS W/ LED LIGHTING

Prepared For:



Hall Equities Group
 1855 Olympic Blvd.,
 Suite 300
 Walnut Creek, CA 94596
 Phone: (925) 933-4000
 Fax: (925) 933-4150



DSIGNART

3428 Hillcrest Ave. Suite 150
 Antioch, CA 94531
 T. 925.933.9677
 F. 925.933.9784
 E. Info@dsignart.com
 http://www.dsignart.com

Phase:

- Conceptual
- Design Development
- Approved Plan

Date: 4-29-16

Drawn by: J.H./S.A.

Scale: As Noted

Dwg #: _____

Revision: 10-26-16

Title: _____

Page #: **G.12**

4.4 Type F - Sportsmall Electronic LED Message Board



F1 F2

SPORTSMALL ELECTRONIC LED MESSAGE BOARD

SCALE 3/8" = 1'-0)

QUANTITY: TWO (2) EACH
 CONSTRUCTION: FABRICATED ALUMINUM CASE WITH LED MESSAGE BOARD
 COPY: PROGRAMABLE SCROLLING LED MESSAGE BOARD
 ILLUMINATION: LED ILLUMINATION

MASTER SIGN PROGRAM

Prepared For:



Hall Equities Group
 1855 Olympic Blvd.,
 Suite 300
 Walnut Creek, CA 94596
 Phone: (925) 933-4000
 Fax: (925) 933-4150



DSIGNART

3428 Hillcrest Ave. Suite 150
 Antioch, CA 94531
 T. 925.933.9677
 F. 925.933.9784
 E. Info@dsignart.com
 http://www.dsignart.com

Phase:

- Conceptual
- Design Development
- Approved Plan

Date: 4-29-16

Drawn by: J.H./S.A.

Scale: As Noted

Dwg #: _____

Revision: 10-26-16

Title: _____

Page #: **G.13**



G

TENANT IDENTIFICATION - CANOPY SIGN - COPA REAL

- QUANTITY: ONE (1) SET
- CONSTRUCTION: INDIVIDUAL ILLUMINATED LETTERS
- COPA REAL: OPAQUE BLACK FACES W/ WHITE HALO ILLUMINATION
- FUTBOL CENTRES: ILLUMINATED GOLD FACES
- ILLUMINATION: ILLUMINATED W/ LED LIGHTING



MASTER SIGN PROGRAM

Prepared For:



Hall Equities Group
 1855 Olympic Blvd.,
 Suite 300
 Walnut Creek, CA 94596
 Phone: (925) 933-4000
 Fax: (925) 933-4150



DSIGNART

3428 Hillcrest Ave. Suite 150
 Antioch, CA 94531
 T. 925.933.9677
 F. 925.933.9784
 E. Info@dsignart.com
 http://www.dsignart.com

Phase:

- Conceptual
- Design Development
- Approved Plan

Date: 4-29-16

Drawn by: J.H./S.A.

Scale: As Noted

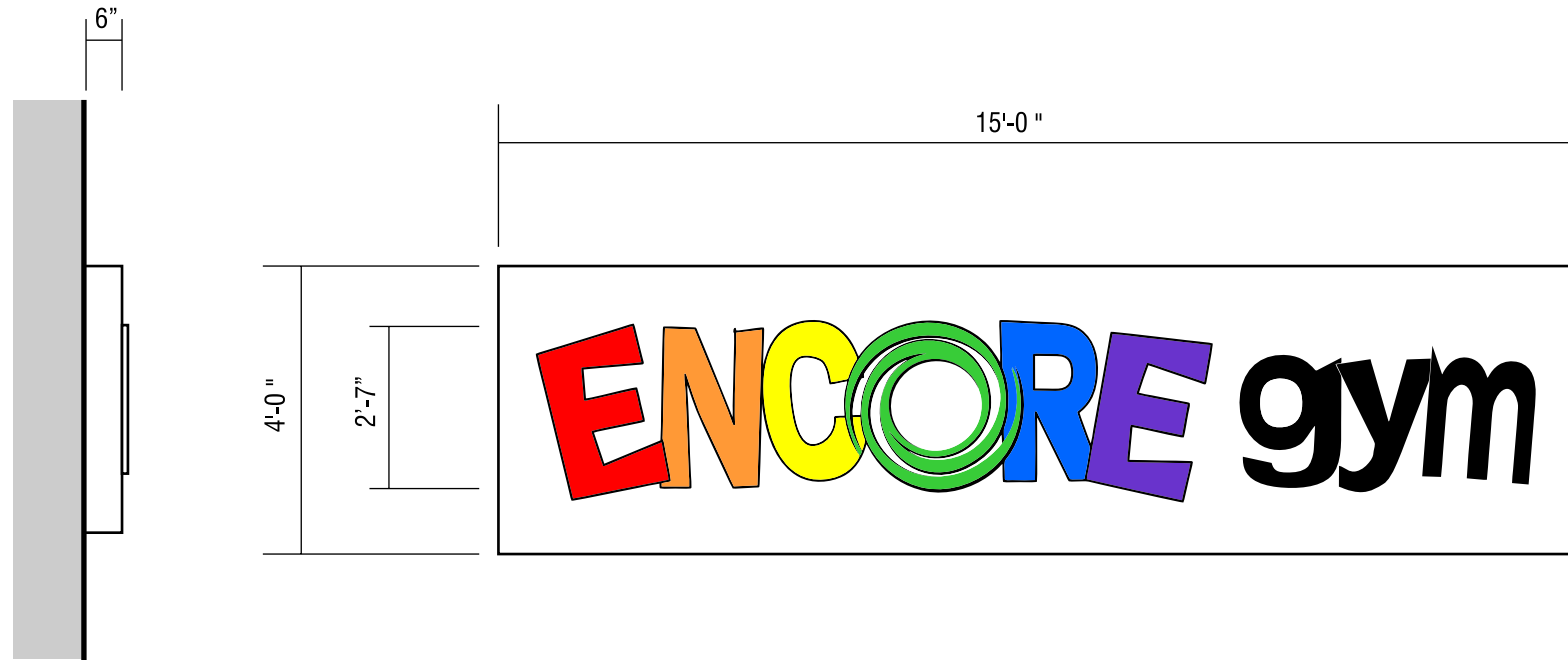
Dwg #: _____

Revision: 10-26-16

Title: _____

Page #: **G.14**

4.6 Type H - Tenant Identification - Wall Sign



H3 TENANT IDENTIFICATION - WALL MOUNT - ENCORE GYM
SCALE 3/8" = 1'-0"

- QUANTITY: ONE (1) EACH ABOVE MAIN ENTRANCE
- CONSTRUCTION: FABRICATED ALUMINUM SIGN PANEL, PAINTED WHITE, SATIN FINISH
- COPY: 1/2" PUSH-THRU ACRYLIC LETTERS WITH TRANSLUCENT VINYL TO MATCH TENANT COLORS
- ILLUMINATION: OPAQUE BACKGROUND, INTER. ILLUMINATED LETTERS W/ LED LIGHTING

MASTER SIGN PROGRAM

Prepared For:



Hall Equities Group
1855 Olympic Blvd.,
Suite 300
Walnut Creek, CA 94596
Phone: (925) 933-4000
Fax: (925) 933-4150



DSIGNART

3428 Hillcrest Ave. Suite 150
Antioch, CA 94531
T. 925.933.9677
F. 925.933.9784
E. Info@dsignart.com
http://www.dsignart.com

Phase:

- Conceptual
- Design Development
- Approved Plan

Date: 4-29-16

Drawn by: J.H./S.A.

Scale: As Noted

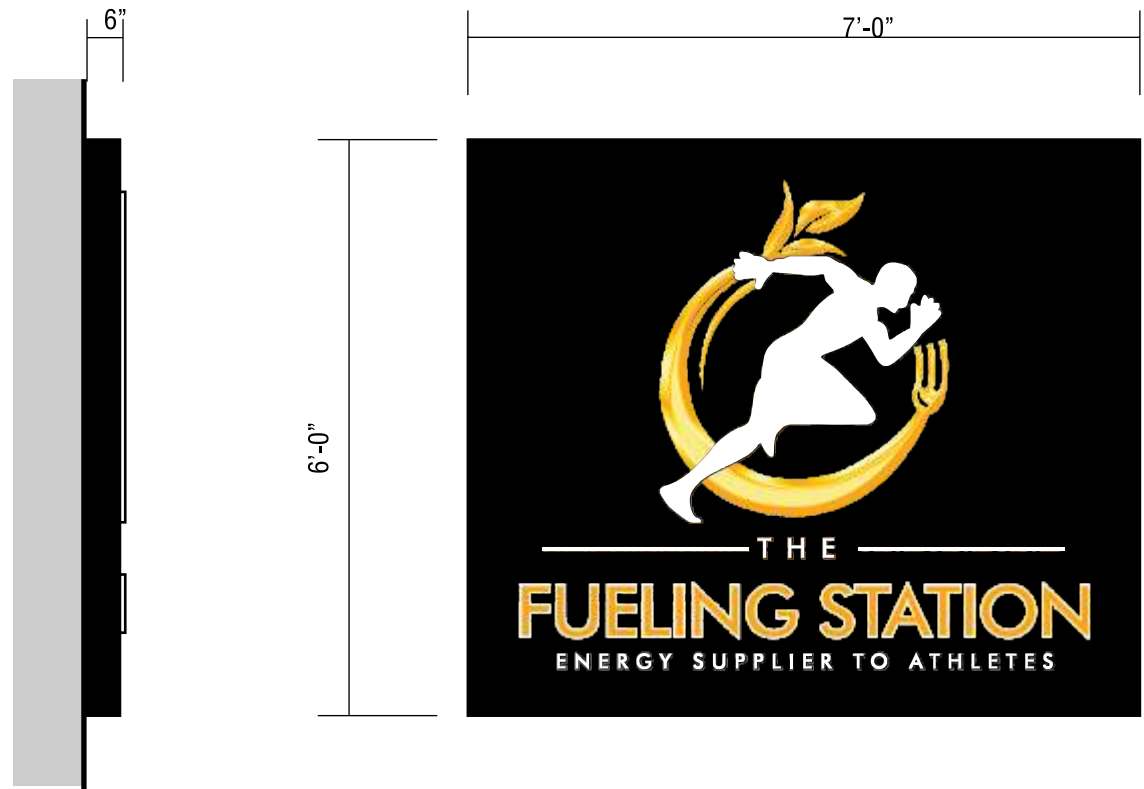
Dwg #: _____

Revision: 10-26-16

Title: _____

Page #: **G.15**

4.7 Type H - Tenant Identification - Wall Sign



H4 TENANT IDENTIFICATION - WALL MOUNT - FUELING STATION

SCALE 1/2" = 1'-0"

QUANTITY: ONE (1) EACH
 CONSTRUCTION: FABRICATED ALUMINUM SIGN PANEL, PAINTED BLACK, SATIN FINISH
 COPY: 1/2" PUSH-THRU ACRYLIC LETTERS WITH TRANSLUCENT VINYL FACES
 ILLUMINATION: OPAQUE BACKGROUND, INTER. ILLUMINATED LETTERS W/ LED LIGHTING



H5 TENANT IDENTIFICATION - WALL MOUNT - FUELING STATION

SCALE 1/2" = 1'-0"

QUANTITY: ONE (1) EACH
 CONSTRUCTION: FABRICATED ALUMINUM SIGN PANEL, PAINTED BLACK, SATIN FINISH
 COPY: 1/2" PUSH-THRU ACRYLIC LETTERS WITH TRANSLUCENT VINYL FACES
 ILLUMINATION: OPAQUE BACKGROUND, INTER. ILLUMINATED LETTERS W/ LED LIGHTING

MASTER SIGN PROGRAM

Prepared For:



Hall Equities Group
 1855 Olympic Blvd.,
 Suite 300
 Walnut Creek, CA 94596
 Phone: (925) 933-4000
 Fax: (925) 933-4150



DSIGNART

3428 Hillcrest Ave. Suite 150
 Antioch, CA 94531
 T. 925.933.9677
 F. 925.933.9784
 E. Info@dsignart.com
 http://www.dsignart.com

Phase:

- Conceptual
- Design Development
- Approved Plan

Date: 4-29-16

Drawn by: J.H./S.A.

Scale: As Noted

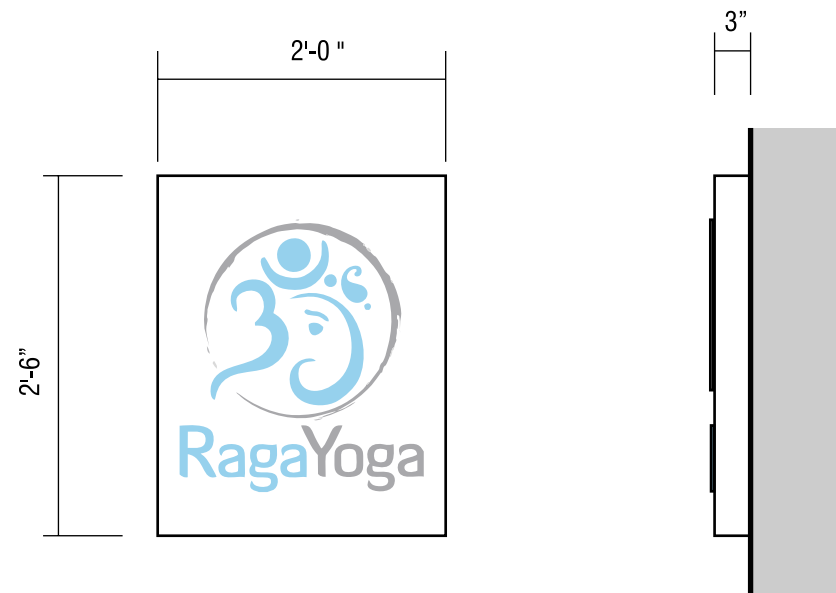
Dwg #: _____

Revision: 10-26-16

Title: _____

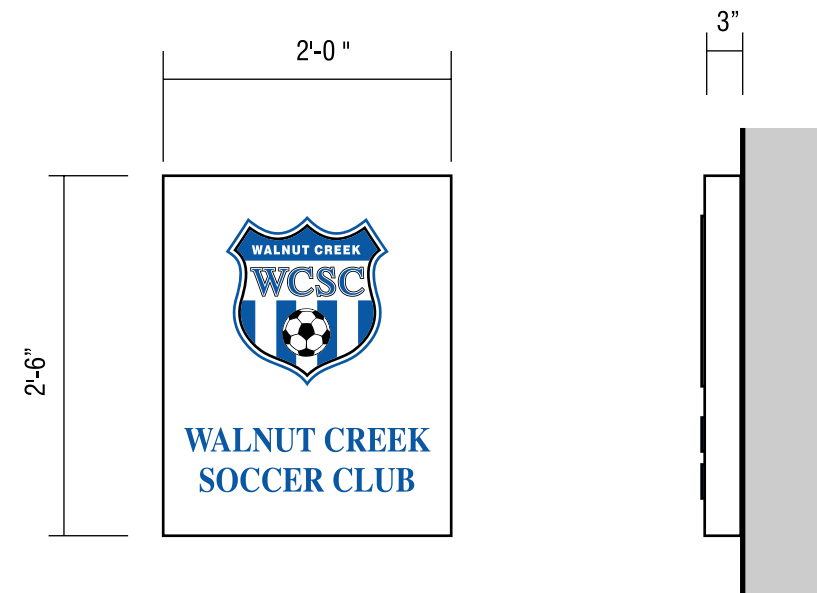
Page #: **G.16**

4.8 Type H - Tenant Identification - Wall Sign



OPTION A **H7** **TENANT IDENTIFICATION - WALL MOUNT - RAGA YOGA** 3/4" = 1'-0"

QUANTITY: ONE (1) EACH
 CONSTRUCTION: FABRICATED ALUMINUM SIGN PANEL, PAINTED BLACK, SATIN FINISH
 COPY: ROUTED OUT AND BACKED W/ TRANSLUCENT ACRYLIC
 ILLUMINATION: OPAQUE BACKGROUND, INTER. ILLUMINATED LETTERS W/ LED LIGHTING



OPTION A **H8** **TENANT IDENTIFICATION - WALL MOUNT - RAGA YOGA** 3/4" = 1'-0"

QUANTITY: ONE (1) EACH
 CONSTRUCTION: FABRICATED ALUMINUM SIGN PANEL, PAINTED BLACK, SATIN FINISH
 COPY: ROUTED OUT AND BACKED W/ TRANSLUCENT ACRYLIC
 ILLUMINATION: OPAQUE BACKGROUND, INTER. ILLUMINATED LETTERS W/ LED LIGHTING

Prepared For:



Hall Equities Group
 1855 Olympic Blvd.,
 Suite 300
 Walnut Creek, CA 94596
 Phone: (925) 933-4000
 Fax: (925) 933-4150



DSIGNART

3428 Hillcrest Ave. Suite 150
 Antioch, CA 94531
 T. 925.933.9677
 F. 925.933.9784
 E. Info@dsignart.com
 http://www.dsignart.com

Phase:

- Conceptual
- Design Development
- Approved Plan

Date: 4-29-16

Drawn by: J.H./S.A.

Scale: As Noted

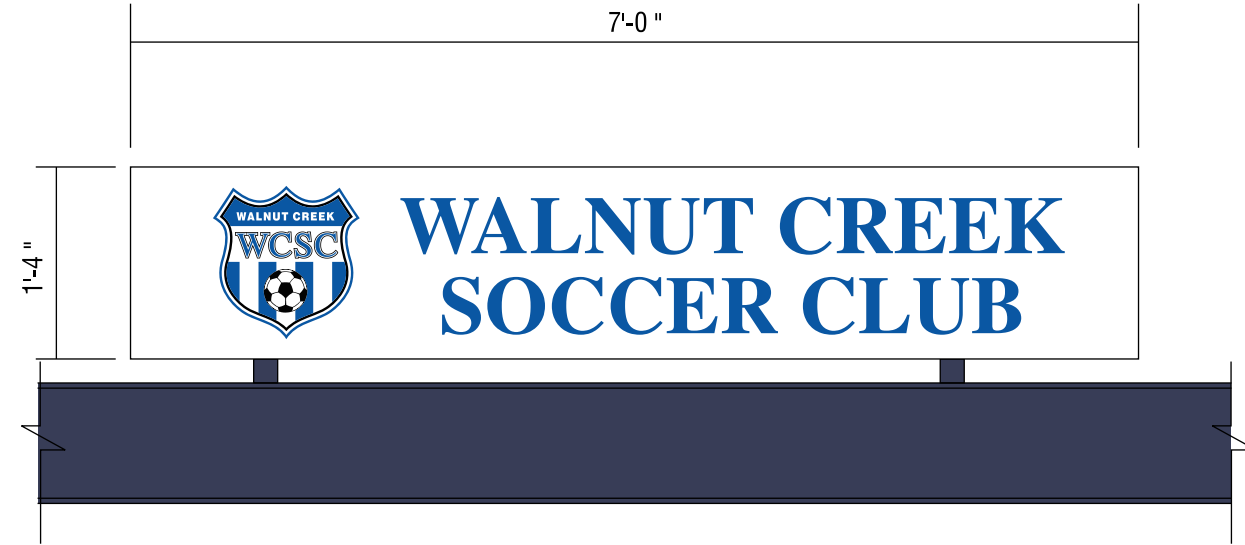
Dwg #:

Revision: 10-26-16

Title:

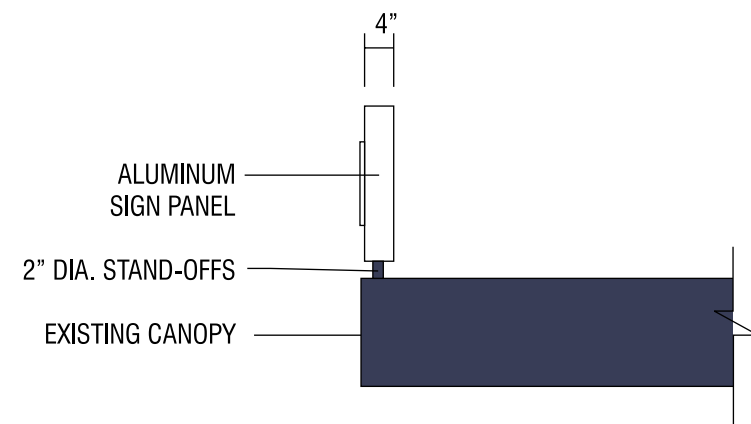
Page #: **G.17**

4.8 Type H - Tenant Identification - Canopy Sign



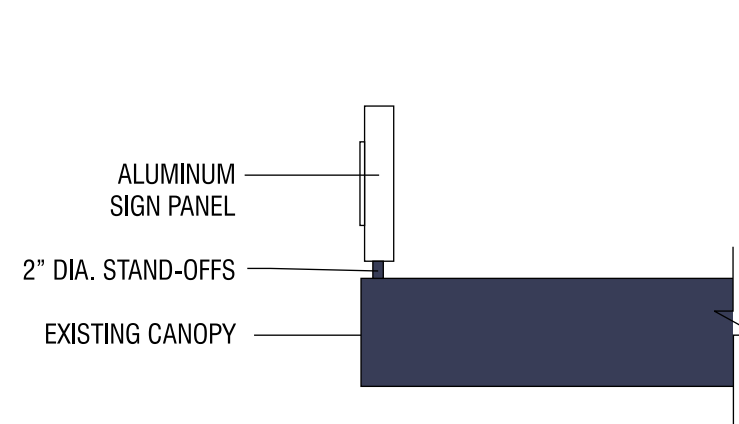
OPTION B **H6** TENANT IDENTIFICATION - CANOPY MOUNT - RAGA YOGA 3/4" = 1'-0"

- QUANTITY: ONE (1) EACH
- CONSTRUCTION: FABRICATED ALUMINUM SIGN PANEL, PAINTED BLACK, SATIN FINISH
- COPY: ROUTED OUT AND BACKED W/ TRANSLUCENT ACRYLIC
- ILLUMINATION: OPAQUE BACKGROUND, INTER. ILLUMINATED LETTERS W/ LED LIGHTING



OPTION B **H7** TENANT IDENTIFICATION - CANOPY MOUNT - WALNUT CREEK SOCCER CLUB 3/4" = 1'-0"

- QUANTITY: ONE (1) EACH
- CONSTRUCTION: FABRICATED ALUMINUM SIGN PANEL, PAINTED BLACK, SATIN FINISH
- COPY: ROUTED OUT AND BACKED W/ TRANSLUCENT ACRYLIC
- ILLUMINATION: OPAQUE BACKGROUND, INTER. ILLUMINATED LETTERS W/ LED LIGHTING



MASTER SIGN PROGRAM

Prepared For:



Hall Equities Group
1855 Olympic Blvd.,
Suite 300
Walnut Creek, CA 94596
Phone: (925) 933-4000
Fax: (925) 933-4150



DSIGNART

3428 Hillcrest Ave. Suite 150
Antioch, CA 94531
T. 925.933.9677
F. 925.933.9784
E. Info@dsignart.com
http://www.dsignart.com

Phase:

- Conceptual
- Design Development
- Approved Plan

Date: 4-29-16

Drawn by: J.H./S.A.

Scale: As Noted

Dwg #: _____

Revision: 10-26-16

Title: _____

Page #: **G.18**