



Plaza Escuela
Walnut Creek, CA



DSIGNART

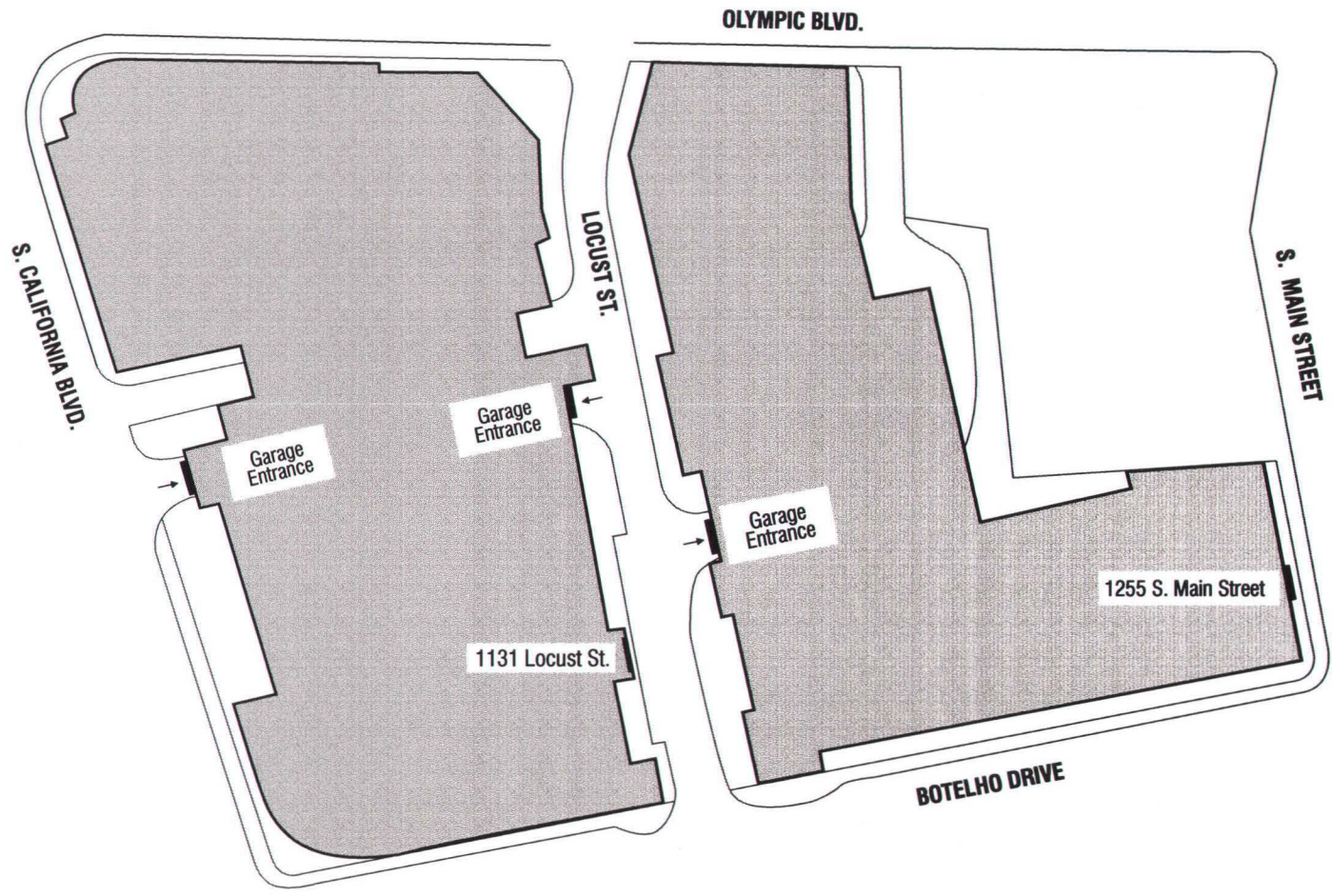
190 N. Wiget Lane
Suite 275
Walnut Creek, CA
94598-2440
T. 925.933.9677
F. 925.933.9784
E. Info@dsignart.com
<http://www.dsignart.com>

CITY OF WALNUT CREEK
PLANS APPROVED
PERMIT No. Y07-043 DATE 9/5/07
BY: D. Tam Reso 2544

RECEIVED

AUG 21 2007

CITY OF WALNUT CREEK
COMMUNITY DEVELOPMENT DEPT



SITE PLAN

SCOPE OF WORK:

- A) 1255 SO. MAIN - 2nd FLOOR TENANT ENTRANCE IDENTIFICATION
- B) 1131 LOCUST ST. - 2nd FLOOR TENANT ENTRANCE IDENTIFICATION
- C) PARKING GARAGE ENTRANCES IDENTIFICATION (TWO ENTRANCES ON LOCUST & ONE ENTRANCE ON SOUTH CALIFORNIA)



190 N. Wiget Lane
 Suite 275
 Walnut Creek, CA
 94598-2440
 T. 925.933.9677
 F. 925.933.9784
 E. info@dsignart.com
 http://www.dsignart.com

ALL RIGHTS RESERVED:
 This is an original unpublished piece of artwork generated by DSignArt, Inc. It is not to be shown to anyone outside your organization, nor is to be used, reproduced, copied or exhibited in any fashion without written authorization from DSignArt, Inc.

Project:



Plaza Escuela
 Walnut Creek, CA

Phase:

- Conceptual
- Design Development
- Construction Drawing

Date: 8-21-07

Drawn by: S.A / P.S.

Scale: _____

Dwg #: _____

Revision: _____

Title: _____

Page #: **G.1**



190 N. Wiget Lane
Suite 275
Walnut Creek, CA
94598-2440
T. 925.933.9677
F. 925.933.9784
E. info@dsignart.com
http://www.dsignart.com

ALL RIGHTS RESERVED:
This is an original unpublished piece of artwork generated by DSignArt, Inc. It is not to be shown to anyone outside your organization, nor is to be used, reproduced, copied or exhibited in any fashion without written authorization from DSignArt, Inc.

Project:



Plaza Escuela
Walnut Creek, CA

Phase:

- Conceptual
- Design Development
- Construction Drawing

Date: 8-21-07

Drawn by: S.A / P.S.

Scale: _____

Dwg #: _____

Revision: _____

Title: _____

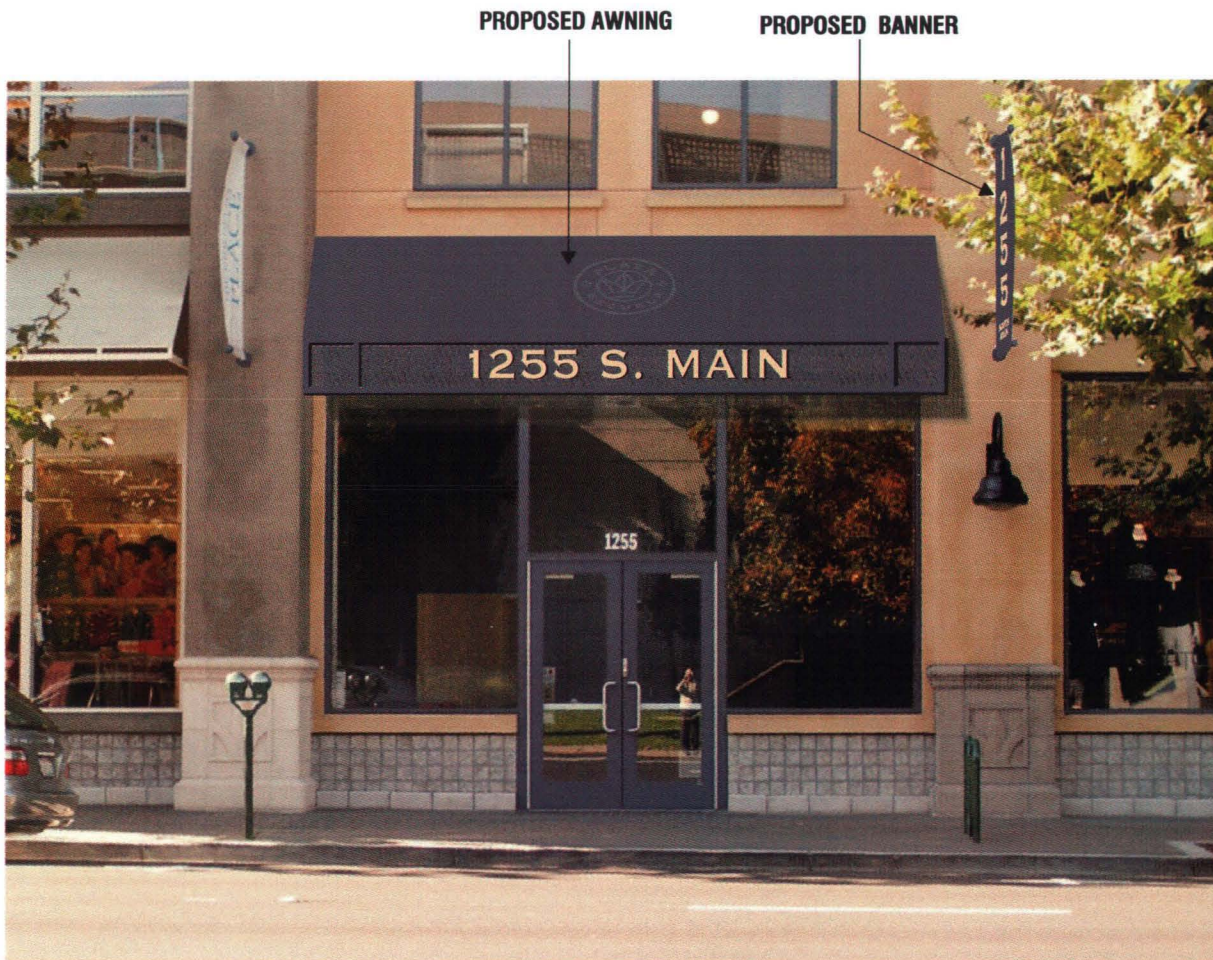
Page #: **G.2**



1255 S. MAIN ST. - 2nd FLOOR TENANT ENTRANCE

EXISTING CONDITION

3/16" = 1'-0"



1255 S. MAIN ST. - 2nd FLOOR TENANT ENTRANCE

PROPOSED SIGNAGE

3/16" = 1'-0"

1. PROPOSED AWNING WITH DIMENSIONAL ADDRESS LETTERS
2. PROPOSED PROJECTING ADDRESS BANNER



DSIGNART

190 N. Wiget Lane
 Suite 275
 Walnut Creek, CA
 94598-2440
 T. 925.933.9677
 F. 925.933.9784
 E. info@dsignart.com
 http://www.dsignart.com

ALL RIGHTS RESERVED:
 This is an original unpublished piece of artwork generated by DSignArt, Inc. It is not to be shown to anyone outside your organization, nor is to be used, reproduced, copied or exhibited in any fashion without written authorization from DSignArt, Inc.

Project:



Plaza Escuela
 Walnut Creek, CA

Phase:

- Conceptual
- Design Development
- Construction Drawing

Date: 8-21-07

Drawn by: S.A / P.S.

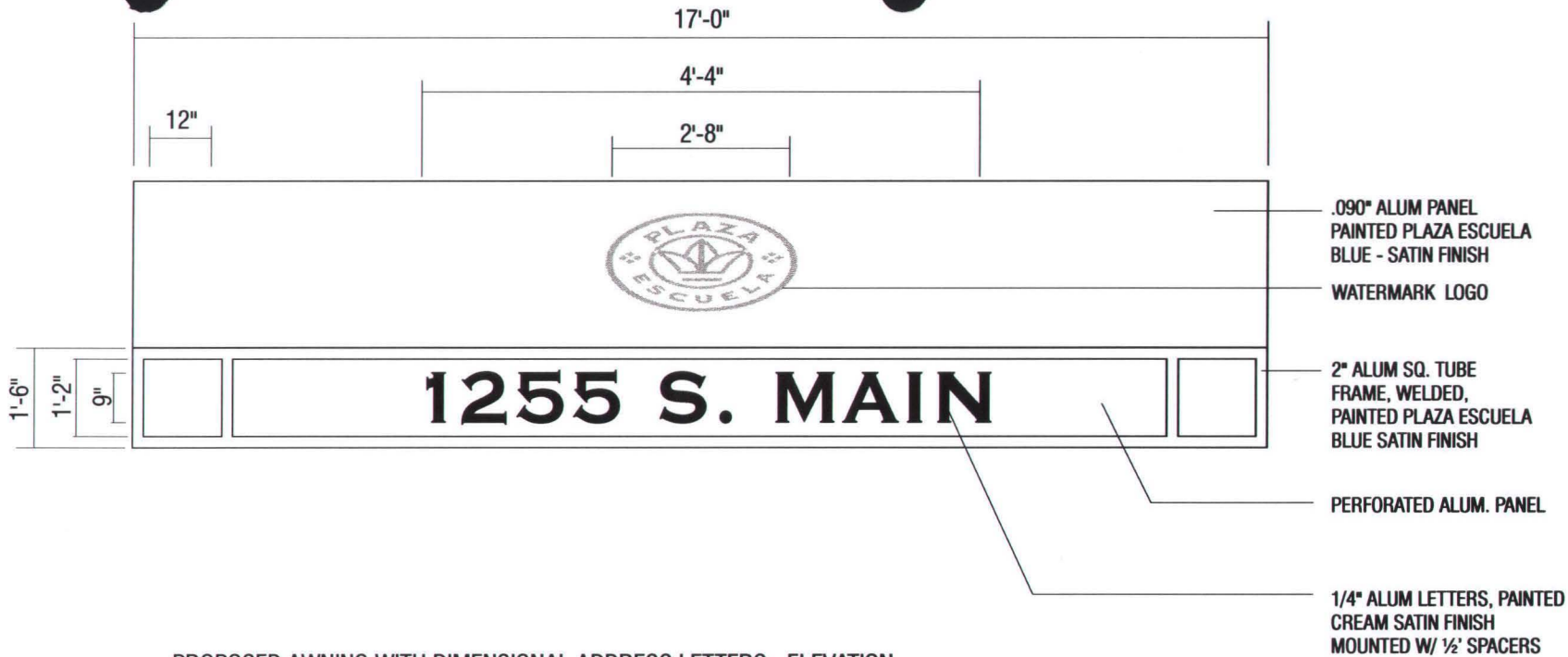
Scale: _____

Dwg #: _____

Revision: _____

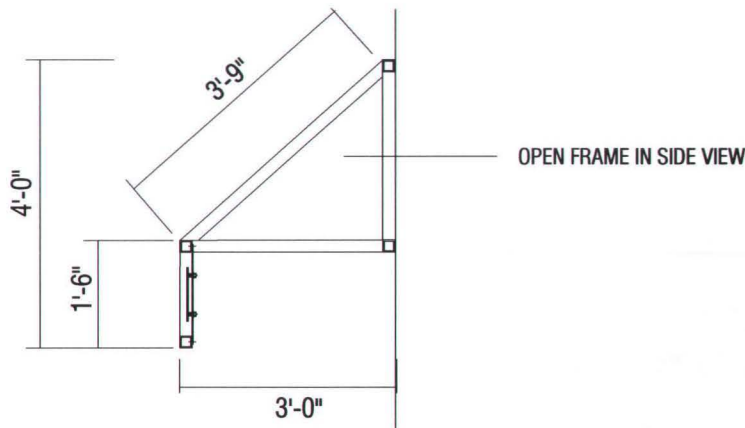
Title: _____

Page #: **G.3**



PROPOSED AWNING WITH DIMENSIONAL ADDRESS LETTERS - ELEVATION

3/8" = 1'-0"



PROPOSED AWNING WITH DIMENSIONAL ADDRESS LETTERS - SECTION

3/8" = 1'-0"



190 N. Wiget Lane
Suite 275
Walnut Creek, CA
94598-2440
T. 925.933.9677
F. 925.933.9784
E. info@dsignart.com
http://www.dsignart.com

ALL RIGHTS RESERVED:
This is an original unpublished
piece of artwork generated by
DSignArt, Inc. It is not to be
shown to anyone outside your
organization, nor is to be used,
reproduced, copied or exhibited
in any fashion without written
authorization from DSignArt, Inc.

Project:



Plaza Escuela
Walnut Creek, CA

Phase:

Conceptual

Design Development

Construction Drawing

Date: 8-21-07

Drawn by: S.A / P.S.

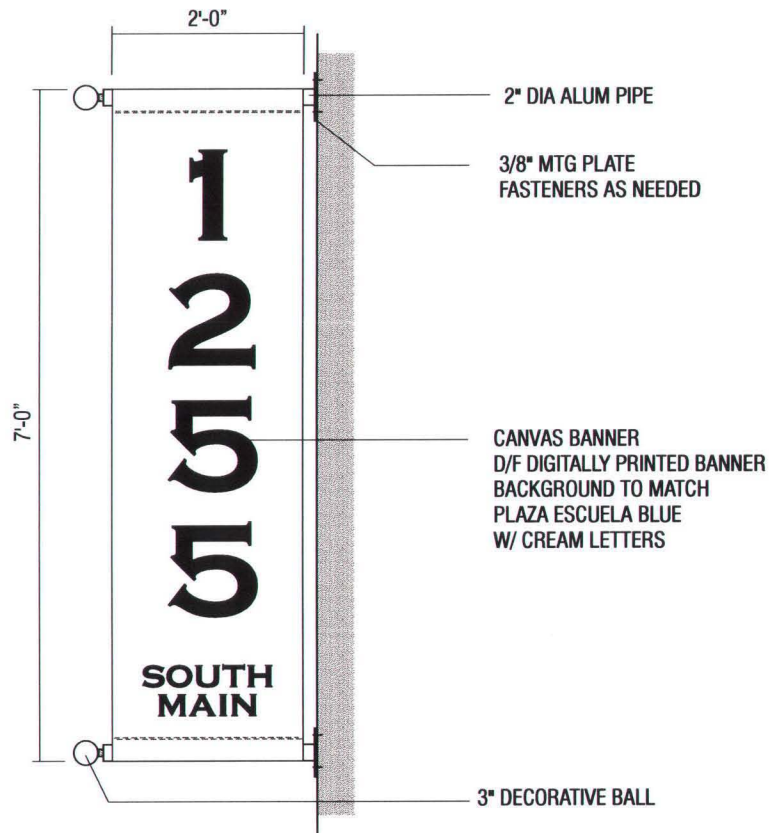
Scale: _____

Dwg #: _____

Revision: _____

Title: _____

Page #: G.4



PROPOSED PROJECTING ADDRESS BANNER

1/2" = 1'-0"



190 N. Wiget Lane
Suite 275
Walnut Creek, CA
94598-2440
T. 925.933.9677
F. 925.933.9784
E. Info@dsignart.com
http://www.dsignart.com

ALL RIGHTS RESERVED:
This is an original unpublished piece of artwork generated by DSignArt, Inc. It is not to be shown to anyone outside your organization, nor is to be used, reproduced, copied or exhibited in any fashion without written authorization from DSignArt, Inc.

Project:



Plaza Escuela
Walnut Creek, CA

Phase:

- Conceptual
- Design Development
- Construction Drawing

Date: 8-21-07

Drawn by: S.A / P.S.

Scale: _____

Dwg #: _____

Revision: _____

Title: _____

Page #: **G.5**



190 N. Wiget Lane
Suite 275
Walnut Creek, CA
94598-2440
T. 925.933.9677
F. 925.933.9784
E. Info@dsignart.com
<http://www.dsignart.com>

ALL RIGHTS RESERVED:
This is an original unpublished piece of artwork generated by DSignArt, Inc. It is not to be shown to anyone outside your organization, nor is to be used, reproduced, copied or exhibited in any fashion without written authorization from DSignArt, Inc.

Project:



Plaza Escuela
Walnut Creek, CA

Phase:

- Conceptual
- Design Development
- Construction Drawing

Date: 8-21-07

Drawn by: S.A/P.S.

Scale: _____

Dwg #: _____

Revision: _____

Title: _____

Page #: **G.6**



1131 LOCUST ST. - 2nd FLOOR TENANT ENTRANCE

EXISTING CONDITION

3/16" = 1'-0"



1131 LOCUST ST. - 2nd FLOOR TENANT ENTRANCE

PROPOSED SIGNAGE

3/16" = 1'-0"

- A) PROPOSED FREE-STANDING DIMENSIONAL ADDRESS LETTERS
- B) REPAINT EXISTING FASCIA PLAZA ESCUELA BLUE
- C) NEW DIMENSIONAL PLAZA ESCUELA LOGO



DSIGNART
 190 N. Wiget Lane
 Suite 275
 Walnut Creek, CA
 94598-2440
 T. 925.933.9677
 F. 925.933.9784
 E. Info@dsignart.com
 http://www.dsignart.com

ALL RIGHTS RESERVED:
 This is an original unpublished piece of artwork generated by DSignArt, Inc. It is not to be shown to anyone outside your organization, nor is to be used, reproduced, copied or exhibited in any fashion without written authorization from DSignArt, Inc.

Project:



Plaza Escuela
 Walnut Creek, CA

Phase:

- Conceptual
- Design Development
- Construction Drawing

Date: 8-21-07

Drawn by: S.A / P.S.

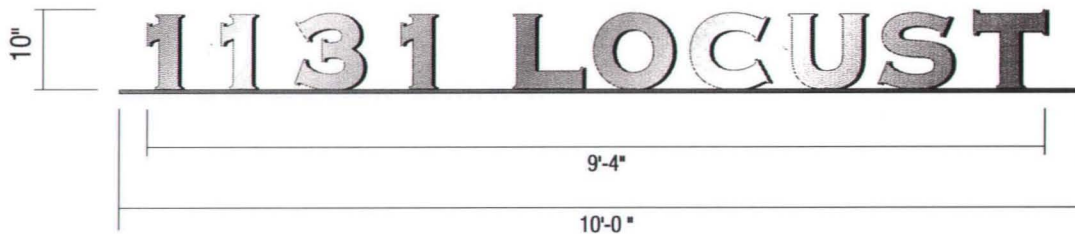
Scale: _____

Dwg #: _____

Revision: _____

Title: _____

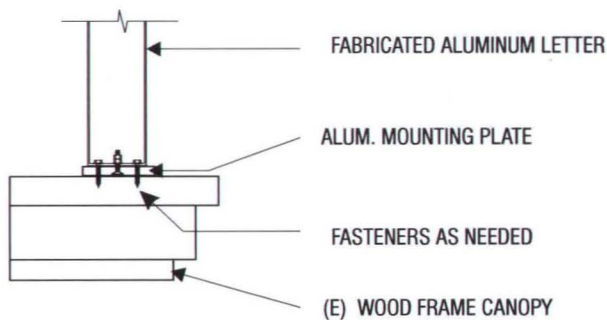
Page #: **G.7**



PROPOSED FREE-STANDING DIMENSIONAL ADDRESS LETTERS

1/2" = 1'-0"

3" DEEP REVERSE CHANNEL ALUMINUM FABRICATED LETTERS
 PAINT FACES, RETURNS AND BACKS SILVER TO MATCH MATHEWS BRUSHED ALUMINUM - SATIN FINISH
 LETTERS MOUNTED ONTO CONTINUOUS 3/8" MOUNTING PLATE.



MOUNTING DETAIL



PROPOSED PLAZA ESCUELA LOGO

1/2" = 1'-0"

1/2" DEEP SINTRA FCO EMBLEM
 PAINT FACES AND RETURNS SILVER TO MATCH
 MATHEWS BRUSHED ALUMINUM - SATIN FINISH.
 INSTALLED WITH THREADED STUDS AND SILICONE ADHESIVE.



190 N. Wiget Lane
 Suite 275
 Walnut Creek, CA
 94598-2440
 T. 925.933.9677
 F. 925.933.9784
 E. info@dsignart.com
 http://www.dsignart.com

ALL RIGHTS RESERVED:
 This is an original unpublished
 piece of artwork generated by
 DSignArt, Inc. It is not to be
 shown to anyone outside your
 organization, nor is to be used,
 reproduced, copied or exhibited
 in any fashion without written
 authorization from DSignArt, Inc.

Project:



Plaza Escuela
 Walnut Creek, CA

Phase:

- Conceptual
- Design Development
- Construction Drawing

Date: 8-21-07

Drawn by: S.A / P.S.

Scale: _____

Dwg #: _____

Revision: _____

Title: _____

Page #: **G.8**



PARKING GARAGE ENTRANCE TYPICAL ELEVATION

EXISTING CONDITION

NOTE:

ALL THREE GARAGE ENTRANCES ARE TYPICAL.
SEE PLOT PLAN FOR EXACT LOCATIONS.



DSIGNART

190 N. Wiget Lane
Suite 275
Walnut Creek, CA
94598-2440
T. 925.933.9677
F. 925.933.9784
E. info@dsignart.com
http://www.dsignart.com

ALL RIGHTS RESERVED:
This is an original unpublished piece of artwork generated by DSignArt, Inc. It is not to be shown to anyone outside your organization, nor is to be used, reproduced, copied or exhibited in any fashion without written authorization from DSignArt, Inc.

Project:



Plaza Escuela
Walnut Creek, CA

Phase:

- Conceptual
- Design Development
- Construction Drawing

Date: 8-21-07

Drawn by: S.A./P.S.

Scale: _____

Dwg #: _____

Revision: _____

Title: _____

Page #: **G.9**



PARKING GARAGE ENTRANCE TYPICAL ELEVATION

PROPOSED SIGNAGE

- A) PROPOSED PARKING GARAGE IDENTIFICATION
- B) PROPOSED CLEARANCE BAR WITH REFLECTIVE WHITE COPY

NOTE:

ALL THREE GARAGE ENTRANCES ARE TYPICAL.
SEE PLOT PLAN FOR EXACT LOCATIONS.



DSIGNART
190 N. Wiget Lane
Suite 275
Walnut Creek, CA
94598-2440
T. 925.933.9677
F. 925.933.9784
E. info@dsignart.com
http://www.dsignart.com

ALL RIGHTS RESERVED:
This is an original unpublished piece of artwork generated by DSignArt, Inc. It is not to be shown to anyone outside your organization, nor is to be used, reproduced, copied or exhibited in any fashion without written authorization from DSignArt, Inc.

Project:



Plaza Escuela
Walnut Creek, CA

Phase:

- Conceptual
- Design Development
- Construction Drawing

Date: 8-21-07

Drawn by: S.A / P. S.

Scale: _____

Dwg #: _____

Revision: _____

Title: _____

Page #: G.10



190 N. Wiget Lane
Suite 275
Walnut Creek, CA
94598-2440
T. 925.933.9677
F. 925.933.9784
E. Info@dsignart.com
http://www.dsignart.com

ALL RIGHTS RESERVED:
This is an original unpublished
piece of artwork generated by
DSignArt, Inc. It is not to be
shown to anyone outside your
organization, nor is to be used,
reproduced, copied or exhibited
in any fashion without written
authorization from DSignArt, Inc.

Project:



Plaza Escuela
Walnut Creek, CA

Phase:

- Conceptual
- Design Development
- Construction Drawing

Date: 8-21-07

Drawn by: S.A/P.S.

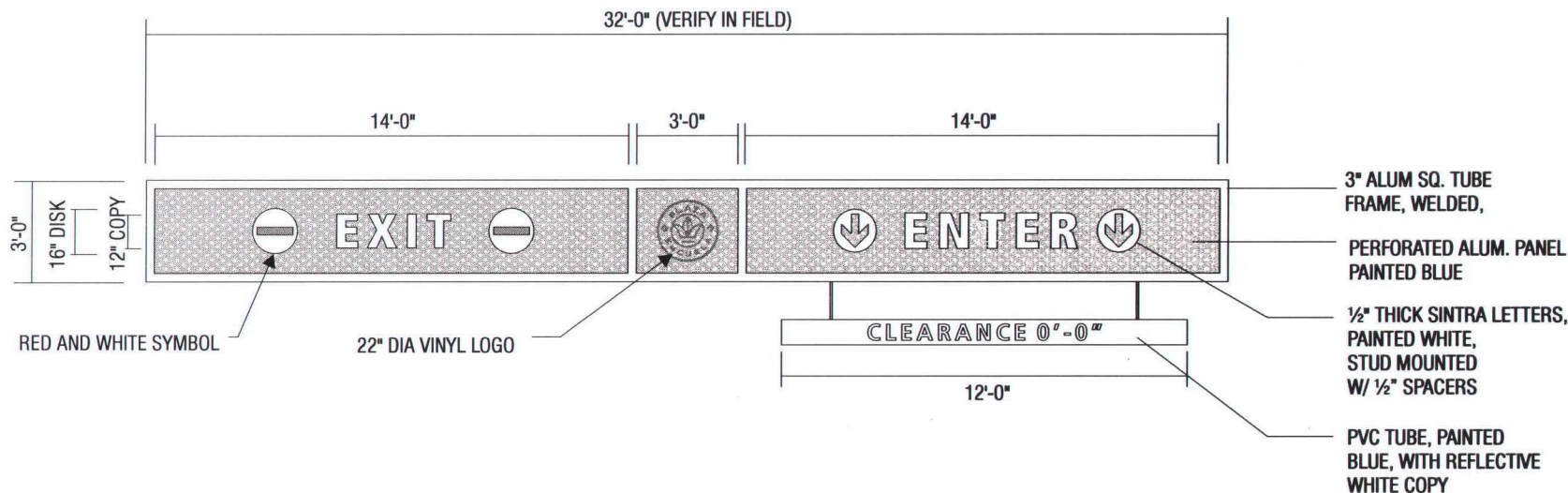
Scale: _____

Drawn #: _____

Revision: _____

Title: _____

Page #: G.11



PARKING GARAGE ENTRANCE IDENTIFICATION

3/16" = 1'-0"