

**OBJECTIVES**

Heather Farm Park is a citywide park designed to serve all residents of the City. An approximately 100-acre site, it serves as the core of Walnut Creek's park & recreation system & provides facilities of citywide significance: a garden center, a large swimming complex, a lake, a pond, a nature area & an equestrian center. It also provides facilities traditionally found in large parks: ball fields, tennis courts & a community center. The open space areas are a highly valued community asset & are used for passive recreation. Heather Farm Park is a destination facility for individuals & groups of many sizes & types. The master plan supports a mix of functional areas intended to serve as an operational whole & is not simply a collection of developed elements.

**PARK IDENTITY**

- Provide a balance between active use of the Park for sports & passive uses such as picnicking, walking, exercising & bird watching. Retaining a balance is a high priority for any future development.
- Enhance pedestrian & bicycle entrances to the Park, especially from the Contra Costa Canal Trail.
- Enhance the North San Carlos Road landscape frontage adjacent to the Equestrian Center, the Heather Farm Maintenance Facility & Contra Costa Water District (C.C.W.D.) property.
- Realign North San Carlos Road adjacent to the lake & provide additional nature area buffer.
- Visually enhance northern edge of Park as viewed from the Contra Costa Canal Trail.
- Acquire additional parkland as is feasible & appropriate. Possible parcels include C.C.W.D., Seven Hills Ranch, parcels between Heather Drive & Ignacio Valley Road, & Diablo Hills Golf Course.

**RECREATION IMPROVEMENTS**

- Bocce: Incorporate four bocce courts with appropriate amenities & parking at the Heather Farm Maintenance Yard frontage. The court area shall be shaded with trees or shade structures & enclosed with fencing.
- Environmental Education: Promote outdoor education with informational kiosks in or near the new group picnic area and nature area.
- Equestrian Center: Transition the Equestrian Center & its activities to another location in or near the city enabling this portion of Heather Farm Park to be redesigned for other recreational uses.
- Group Picnic Area: When the Equestrian Center is moved to another location, develop a group picnic area with associated amenities in that location. Picnic Facility shall allow for up to 250 persons, with seating for approximately 90.
- Skate Park: Provide an approximately 14,000 square foot skate facility with associated amenities.
- Swim Center: Develop a new swim center facility & its associated parking based on the findings of a community aquatic facility needs assessment & other factors in the existing footprint of the pool & parking lot. Improve parking by eliminating the basketball courts & re-designing the current parking lot.

**NATURE AREA ENHANCEMENT**

- Develop a diverse population of native plants & animals to make the lake & the adjacent natural area of greater visual interest to pedestrians.
- Restore & manage the natural area to enhance its value as a natural environment education area.
- Provide visual access to lake habitat from trails & overlooks.
- Protect wildlife by restricting pedestrian access with barrier plantings at critical locations.
- Support use of the area for outdoor environmental education.
- Enhance riparian habitat with appropriate vegetated buffer.

**THE GARDENS AT HEATHER FARM**

- Cluster new classroom, greenhouse, plant propagation facility, composting & storage adjacent to existing garden facilities.

**PEDESTRIAN CIRCULATION**

- Enhance pedestrian path system to provide connections between Park recreation facilities, nature area, The Gardens & the Contra Costa Canal Trail.
- Provide soft surface looped path for walkers.

**HEATHER FARM PARK MAINTENANCE FACILITY**

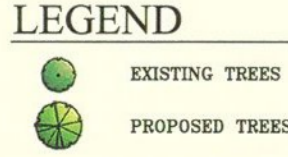
- Reduce the size of the facility to the minimum amount of space that is required for Heather Farm Park maintenance activities to make even more space available for park purposes than is provided in this Master Plan. Eliminate use of this area as a dumping ground or as a citywide maintenance facility.
- Reduce the space dedicated to storing materials for non-city organizations.
- Move the truck washing facility when possible to expand alternatives for park development.
- Place no new maintenance-related uses at the Park.



# MASTER PLAN HEATHER FARM PARK

CITY OF WALNUT CREEK, CALIFORNIA

BABCOCK HANSEN LANDSCAPE ARCHITECTURE



APPROVED  
NOVEMBER 4  
2003



# OBJECTIVES

Heather Farm Park is a citywide park designed to serve all residents of the City. An approximate 100-acre site, it serves as the core of Walnut Creek's park & recreation system & provides facilities of citywide significance: a garden center, a large swimming complex, a lake, a pond, a nature area & an equestrian center. It also provides facilities traditionally found in large parks: ball fields, tennis courts & a community center. The open space areas are a highly valued community asset & are used for passive recreation. Heather Farm Park is a destination facility for individuals & groups of many sizes & types. The master plan supports a mix of functional areas intended to serve as an operational whole & is not simply a collection of developed elements.

## PARK IDENTITY

- Provide a balance between active use of the Park for sports & passive uses such as picnicking, walking, exercising & bird watching. Retaining a balance is a high priority for any future development.
- Enhance pedestrian & bicycle entrances to the Park, especially from the Contra Costa Canal Trail.
- Enhance the North San Carlos Road landscape frontage adjacent to the Equestrian Center, the Heather Farm Maintenance Facility & Contra Costa Water District (CCWD) property.
- Realign North San Carlos Road adjacent to the lake & provide additional nature area buffer.
- Visually enhance northern edge of Park as viewed from the Contra Costa Canal Trail.
- Acquire additional parkland as is feasible & appropriate. Possible parcels include CCWD, Seven Hills Ranch, parcels between Heather Drive & Ygnacio Valley Road, & Diablo Hills Golf Course.

## RECREATION IMPROVEMENTS

- Basketball: Remove the basketball courts in front of the Swim Center. Provide two full-size lighted courts with associated seating, drinking fountain, shade trees & parking at the north end of the Park.
- Bocce: Incorporate four bocce courts with appropriate amenities & parking at the Heather Farm Maintenance Yard frontage. The court area shall be shaded with trees or shade structures & enclosed with fencing.
- Environmental Education: Promote outdoor education with informational kiosks in or near the new group picnic area and nature area.
- Equestrian Center: Transition the Equestrian Center & its activities to another location in or near the city enabling this portion of Heather Farm Park to be redesigned for other recreational uses.
- Group Picnic Area: When the Equestrian Center is moved to another location, develop a group picnic area with associated amenities in that location. Picnic Facility shall allow for up to 250 persons, with seating for approximately 90.
- Skate Park: Provide an approximately 14,000 square foot skate facility with associated amenities.
- Swim Center: Develop a new swim center facility & its associated parking based on the findings of a community aquatic facility needs assessment & other factors in the existing footprint of the pool & parking lot. Improve parking by eliminating the basketball courts & re-designing the current parking lot.
- Volleyball, Tennis, Soccer, Baseball & Softball: These activities should continue to be included in the Park at essentially the current scale & locations.

## NATURE AREA ENHANCEMENT

- Develop a diverse population of native plants & animals to make the lake & the adjacent natural area of greater visual interest to pedestrians.
- Restore & manage the natural area to enhance its value as a natural environment education area.
- Provide visual access to lake habitat from trails & overlooks.
- Protect wildlife by restricting pedestrian access with barrier plantings at critical locations.
- Support use of the area for outdoor environmental education.

- Enhance riparian habitat with appropriate vegetated buffers.

## THE GARDENS AT HEATHER FARM

- Cluster new classroom, greenhouse, plant propagation facility, composting & storage adjacent to existing garden facilities.

## PEDESTRIAN CIRCULATION

- Enhance pedestrian path system to provide connections between Park recreation facilities, nature area, The Gardens & the Contra Costa Canal Trail.
- Provide soft surface looped path for walkers.

## HEATHER FARM PARK MAINTENANCE FACILITY

- Reduce the size of the facility to the minimum amount of space that is required for Heather Farm Park maintenance activities to make even more space available for park purposes than is provided in this Master Plan. Eliminate use of this area as a dumping ground or as a citywide maintenance facility.
- Reduce the space dedicated to storing materials for non-city organizations.
- Move the truck washing facility when possible to expand alternatives for park development.
- Place no new maintenance-related uses at the Park.