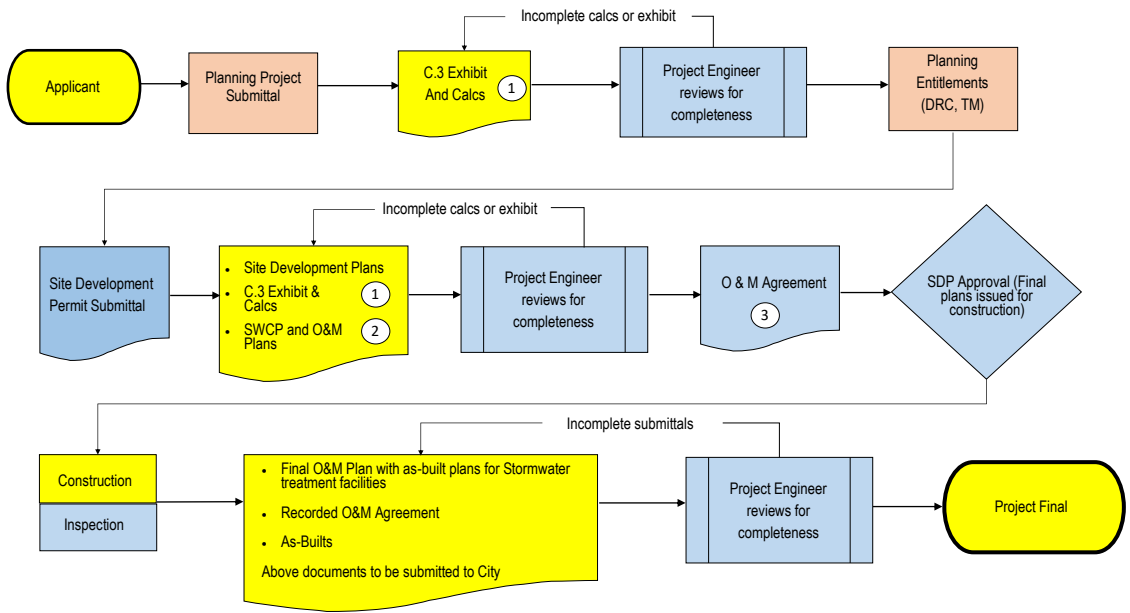




STORMWATER MANAGEMENT PROVISION C.3 REVIEW PROCESS

Provision C.3 Review Process



SUBMITTAL NOTES:

- ① **C.3 Exhibit** is a full size (24x36) plan sheet showing the site broken into drainage management areas and corresponding treatment/flow control IMPs. Output from the IMP calculator shall be included on the plan. Include a completed project data table, refer to Table 1 of SWCP template or Table 2-1 of the Stormwater C.3 Guidebook. In addition, provide an exhibit of the impervious areas to be replaced, impervious areas to remain, and areas newly covered with impervious surface shown on the plans.
- ② **Stormwater Control Plan (SWCP) and Operations and Maintenance (O&M) Plan** are documents detailed in the Stormwater C.3 Guidebook. SWCP is the required report; refer to the Contra Costa County Clean Water Program [website](#) for a template.
- ③ **Stormwater Operations and Maintenance (O&M) Agreement** is a legal document requiring the property owner to maintain all post-construction stormwater treatment facilities. The City's project engineer will prepare the agreement.
- ④ Submit a **Stormwater Control Plan for Small Projects**. A guide and the form can be found in [Appendix C of the C.3 Guidebook](#).

If you have questions, contact the Engineering Division at (925) 943-5839 or email dutyengineer@walnut-creek.org or visit

<https://walnut-creek.org/departments/public-works/clean-water-program/stormwater-treatment>

GENERAL NOTES:

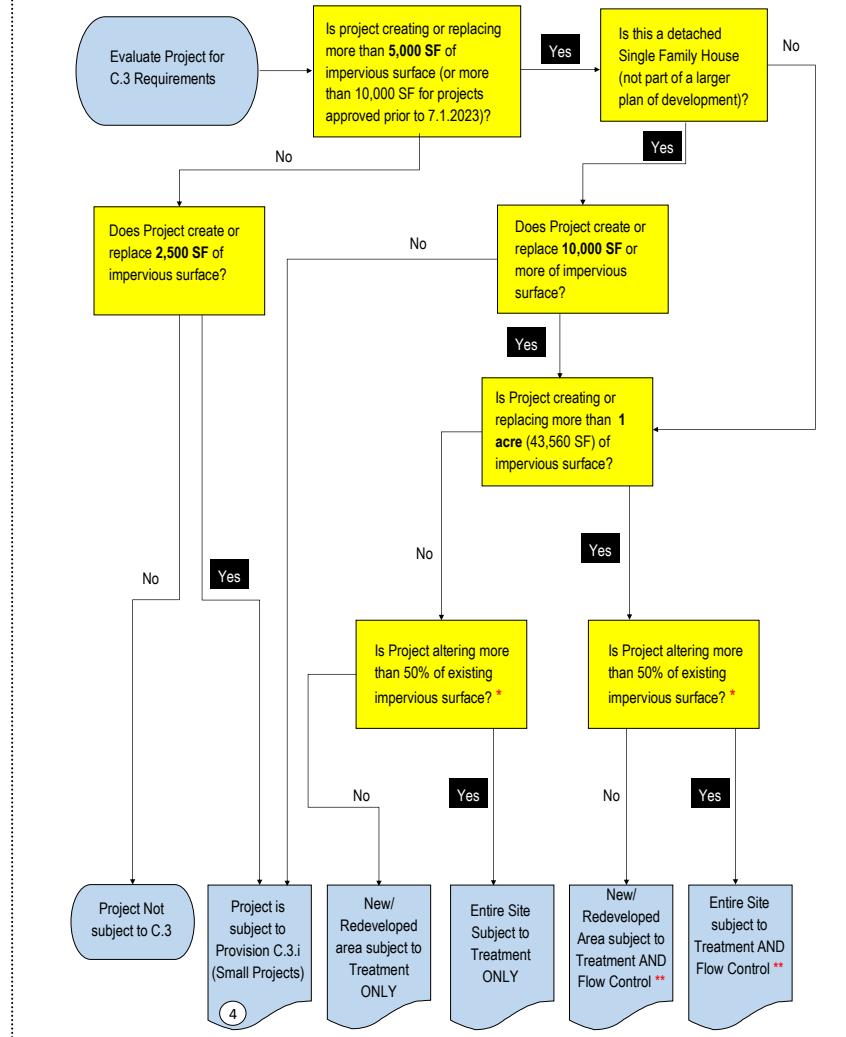
- ◇ Provision C.3 (or C.3) refers to the post-construction stormwater management requirements detailed in provision C.3 of the City's NPDES Permit.
- ◇ The latest guidance, the IMP sizing calculator and BAHM can be found at the Contra Costa County Clean Water Program website: <https://www.cccleanwater.org/development-infrastructure/development/stormwater-c-3-guidebook>

LEGEND & ABBREVIATIONS

- Applicant
- Planning Division
- Engineering Division
- ① Refer to Submittal Notes

- BAHM Bay Area Hydrology Model
- DRC Design Review Commission
- IMP Integrated Management Practice. A facility that provides water treatment integrated into the site design
- SWCP Stormwater Control Plan
- TM Tentative Map

Provision C.3 Applicability



* To determine if a project is altering more than 50% of existing impervious surface, the applicant will need to prepare an exhibit showing existing impervious areas and proposed new impervious areas. The replaced impervious area is the total of all areas where existing impervious surfaces will be removed and replaced with new impervious area. If the replaced impervious area is greater than 50% of the existing impervious area, then the project is considered subject to the 50% rule.

** For sites that are already partially developed, flow control design is required for the increase impervious area only.