

## State and Local Requirements

### Only Rain Down the Drain

It's illegal to let anything other than rainwater go down a storm drain.

Please prevent grease, food waste, cleaners, and wash water from going into the street, gutter, parking lot, or storm drain.

When it rains, stormwater picks up pollutants and takes them untreated into local creeks, the Bay, and the Delta.

**It is the responsibility of the business owner to train staff on proper spill and clean-up procedures and stormwater BMPs. Failure to comply with this request may result in the issuance of an administrative citation or fines that accrue daily. Learn more about this at [www.cccleanwater.org](http://www.cccleanwater.org).**



## Helpful Resources



Visit [ccrecycle.org](http://ccrecycle.org) for local information on:

- Proper Waste Disposal
- Recycling
- Hazardous Materials Disposal
- Waste Hauler Curbside Services/Bulky Pick-up
- Organic Waste and Edible Food Recovery

- Learn more about certified mobile washers at [basmaa.org](http://basmaa.org).
- Visit [cccleanwater.org](http://cccleanwater.org) for information about best management practices.
- Visit [ourwaterourworld.org](http://ourwaterourworld.org) and [ipm.ucanr.edu](http://ipm.ucanr.edu) for information on eco-friendly pest control and less-toxic products.



CONTRA COSTA  
CLEAN WATER  
PROGRAM

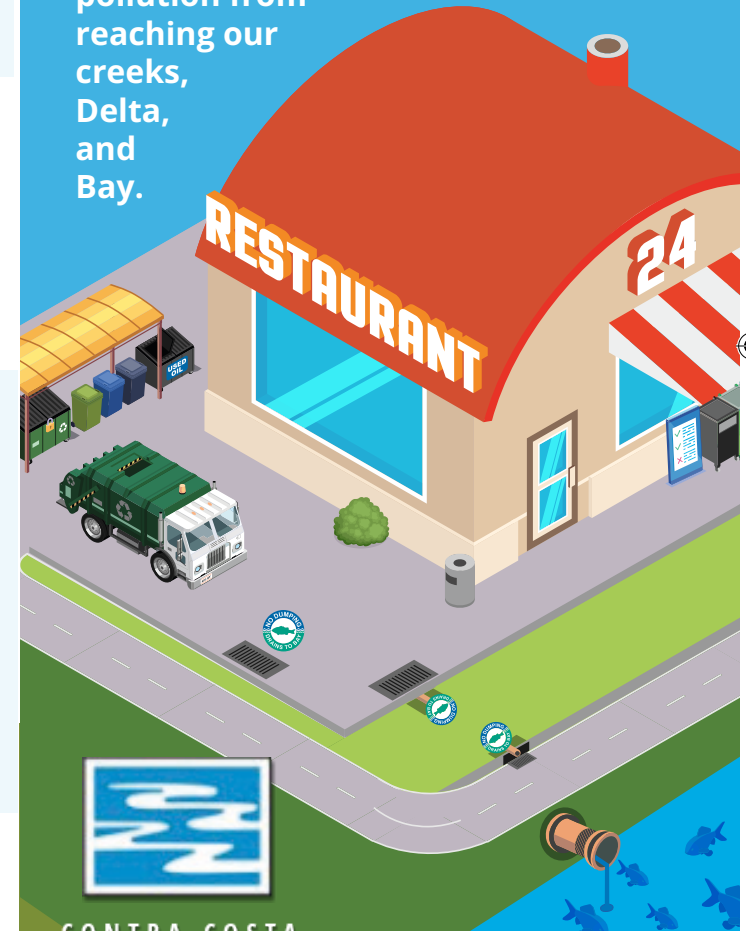
Water is Life • [cccleanwater.org](http://cccleanwater.org)

## BEST MANAGEMENT PRACTICES FOR RESTAURANTS

ONLY RAIN DOWN THE DRAIN



Keep wildlife healthy and fish safe to eat. Prevent pollution from reaching our creeks, Delta, and Bay.



CONTRA COSTA  
CLEAN WATER  
PROGRAM

255 Glacier Drive  
Martinez, CA 94553  
(925) 313-2360



[cccleanwater.org](http://cccleanwater.org)

# BEST MANAGEMENT PRACTICES (BMPs) FOR RESTAURANTS

## Keep Waste Contained

- 1. Choose the right size and frequency of pick-up services
- 2. Keep bins closed. Coordinate with service provider if locks are needed.
- 3. Dispose of liquid waste properly: wash water goes into an indoor drain with a grease trap or separator, Dispose of fats, oils, and grease into an outdoor tallow bin
- 4. Sort solid waste properly: green is for compostable items and food, blue is recycling, and brown/grey is trash (i.e., non-recyclable or compostable)

## Take Care Outdoors

- 5. Sweep outdoor areas regularly and separate litter into designated waste bins
- 6. Do not rinse or power wash anything outdoors or into storm drain (mats, trash cans, dumpsters)
- 7. Never use bleach, degreasers or detergents near drains

## Grease and Spill Maintenance

- 8. Ensure that indoor sinks are connected to a grease removal device
- 9. Be sure to service grease traps and containers regularly and maintain required service records
- 10. Display spill control plan with cleanup instructions and green chemical list
- 11. Use dry cleanup methods for spill response such as sweeping and using granular absorbents or rags; Collect and properly dispose of materials

## Prevent Pests

- 12. Store food in pest-proof containers
- 13. Reduce pest-friendly environments by maintaining clean workspaces and trash storage areas
- 14. Reduce pesticide use; If needed, check out the OWOW resource listed below and do not use near drains



Visit [ourwaterourworld.org](http://ourwaterourworld.org) and [ipm.ucanr.edu](http://ipm.ucanr.edu) for information on eco-friendly pest control and less-toxic products

