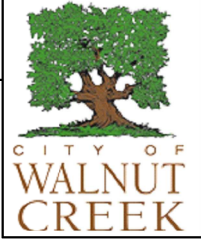
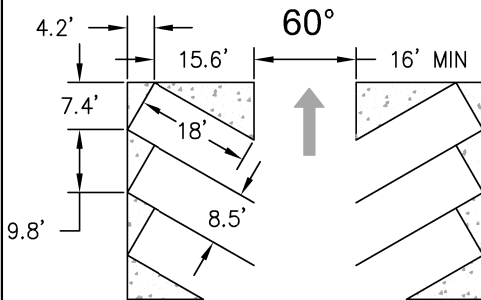
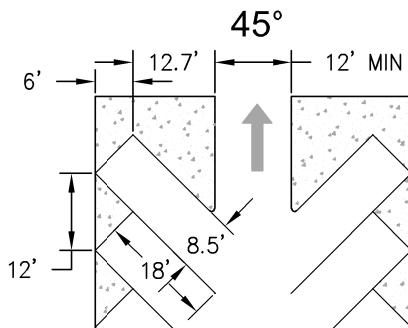
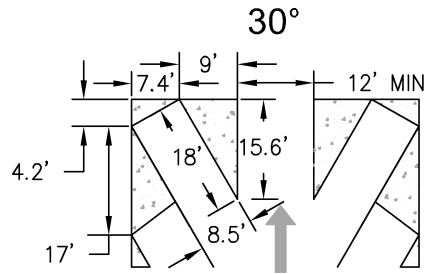


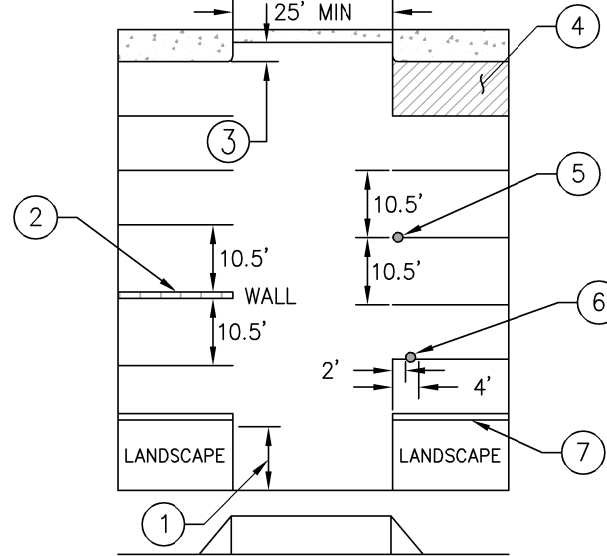
CITY OF WALNUT CREEK OFF STREET PARKING STANDARDS



STALL LAYOUT FOR ANGLED PARKING

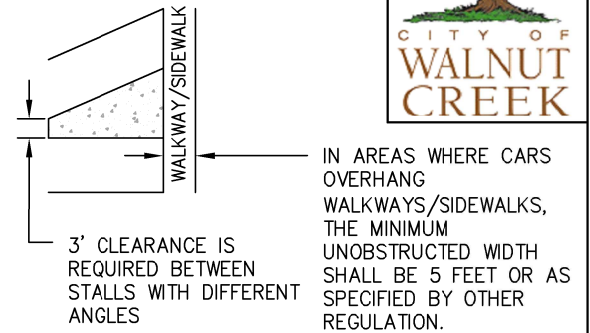


STALL LAYOUT



	WIDTH	LENGTH
STANDARD STALL DIMENSIONS	8.5'	18'
STANDARD STALL DIMENSIONS WITH LANDSCAPE OVERHANG	8.5'	15.5'
COMPACT STALL DIMENSIONS	7.5'	15'
COMPACT STALL DIMENSIONS WITH LANDSCAPE OVERHANG	7.5'	13'

- ① THERE SHALL BE A MINIMUM DISTANCE OF 10 FEET FROM THE BACK OF SIDEWALK, PROPERTY LINE, OR BACK OF CURB WHERE THERE IS NO SIDEWALK TO THE FIRST STALL.
- ② STALLS ADJACENT TO WALLS OR SIMILAR STRUCTURE SHALL BE A MINIMUM OF 10.5 FEET WIDE.
- ③ PROVIDE A 3 FOOT NOTCH SPACE AT THE DEAD END OF A DRIVE AISLE
- ④ A HATCHED TURNAROUND STALL SHALL BE PROVIDED FOR DEAD END AISLES.
- ⑤ WHEN A COLUMN IS LOCATED LESS THAN 2 FEET FROM THE TAIL END OF A STALL, THE PARKING STALL SHALL BE A MINIMUM OF 10.5 FEET WIDE.
- ⑥ COLUMN IS TO BE LOCATED BETWEEN 2 FEET AND 4 FEET TO MAINTAIN A STANDARD 8.5 FOOT WIDE STALL DIMENSION.
- ⑦ IT IS RECOMMENDED TO PROVIDE A 1 FOOT CONCRETE BAND WHEN A PARKING STALL IS ADJACENT TO A LANDSCAPED AREA.



NOTES:

GENERAL:

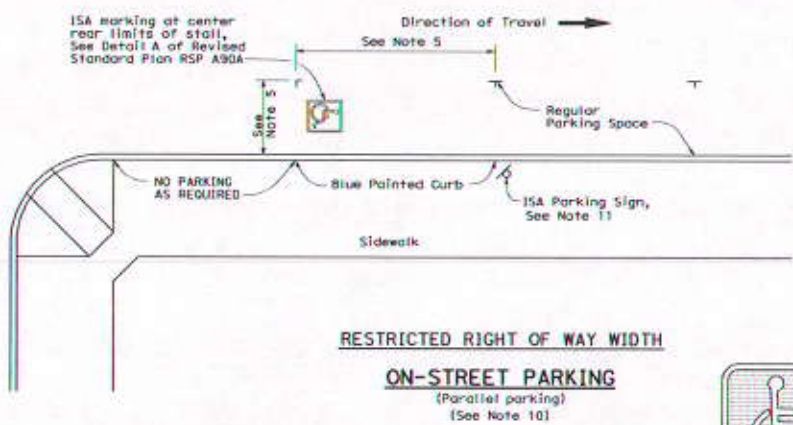
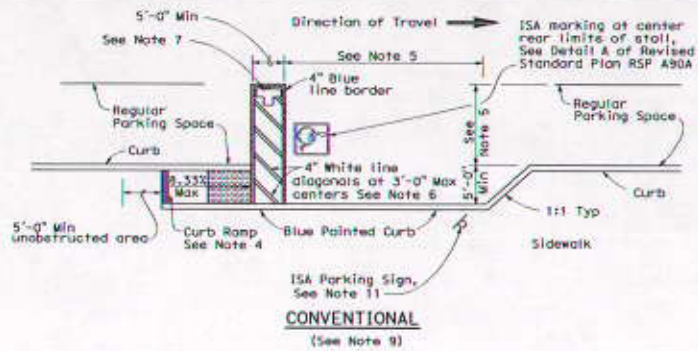
1. COVERED PARKING SPACES FOR SINGLE FAMILY HOMES ARE 9'X20' FOR A SINGLE SPACE AND 18'X20' FOR TWO SPACES.
2. LANDSCAPE OVERHANGS ARE NOT INTENDED TO DEFINE THE LOCATION OF WHEEL STOPS.
3. ALL TWO-WAY AISLES SHALL BE A MINIMUM OF 20 FEET WIDE EXCEPT FOR 90 DEGREE PARKING WHERE AISLES SHALL BE A MINIMUM OF 25 FEET WIDE.
4. ALL PARKING LOTS SHALL BE DESIGNED AND MAINTAINED IN SUCH A WAY THAT VEHICLES DO NOT OVERHANG OR PARK IN THE PUBLIC RIGHT-OF-WAY, OR USE PUBLIC RIGHT OF WAY FOR BACKING OUT OF STALLS (I.E. BACK OUT OF A STALL INTO THE STREET OR ACROSS A SIDEWALK).

COMPACT STALLS:

5. COMPACT STALLS ARE ALLOWED ONLY FOR BUSINESS & PROFESSIONAL OFFICE USE WHERE MORE THAN 10 SPACES ARE REQUIRED.
6. EXISTING COMPACT STALLS FOR OTHER USES MAY REMAIN IF THERE ARE STRUCTURAL CONSTRAINTS OR IF CONVERTING TO STANDARD STALLS WOULD REDUCE THE NUMBER OF STALLS TO BELOW THE MINIMUM REQUIRED.

REVISED: JUNE 2018

REFER TO W.C.M.C. SECTION 10-2.3.206 IN THE ZONING ORDINANCE FOR ADDITIONAL NOTES



**NO
PARKING**

PAVEMENT MARKING
See Note 7



SIGN R99 (CA)



SIGN R99C (CA)
See Note 5



PLAQUE R99B (CA)
SIGN R99 (CA) with PLAQUE R99B (CA)
See Note 3

ISA = International Symbol of Accessibility

DIST.	COUNTY	ROUTE	POST MILES TOTAL	SHEET NO.	TOTAL SHEETS

H. David Carter
REGISTERED CIVIL ENGINEER

June 6, 2008
PLANS APPROVED, DATE

The State of California or its officers or agents shall not be responsible for the accuracy or completeness of electronic copies of this plan when:

To accompany plans detail _____



NOTES:

1. Parking spaces shall be so located that persons with disabilities are not compelled to wheel or walk behind parked cars other than their own.
2. Surface slopes of accessible on-street parking spaces shall be the minimum feasible.
3. Where Plaque R99B (CA) or Sign R99C (CA) are installed, the bottom of the sign or plaque panel shall be a minimum of 7'-0" above the surrounding surface.
4. Curb ramps shall conform to the details shown on Revised Standard Plan RSP A88A.
5. Accessible on-street parking spaces shall not be smaller in length or width than that specified by the local jurisdiction for other parking spaces, but not less than 20'-0" in length and not less than 8'-0" in width.
6. Blue paint, instead of white may be used for marking accessibility aisles in areas where snow may cause white markings to not be visible.
7. The words "NO PARKING", shall be painted in white letters no less than 1'-0" high on a contrasting background and located so that it is visible to traffic enforcement officials. See Standard Plan A24E for square foot area for painting the words "NO PARKING".
8. There shall be no obstructions on the sidewalk adjacent to and for the full length of the parking space, except for the ISA parking sign shown.
9. The Conventional detail should be the primary choice of accessible on-street parking. However, if the sidewalk lacks adequate space to construct a standard curb ramp, the Restricted Right of Way detail should be used.
10. If the Restricted Right of Way width detail is selected and it conflicts with a bus stop or other uses, this detail may apply to the other end of the block.
11. Accessible Parking Only Sign shall be Sign R99C (CA) or Sign R99 (CA) with Plaque R99B (CA).

STATE OF CALIFORNIA
DEPARTMENT OF TRANSPORTATION
**ACCESSIBLE PARKING
ON-STREET**

NO SCALE
RSP A90B DATED JUNE 6, 2008 SUPERSEDES STANDARD PLAN A90B
DATED MAY 1, 2006 - PAGE 118 OF THE STANDARD PLANS BOOK DATED MAY 2006.

REVISED STANDARD PLAN RSP A90B

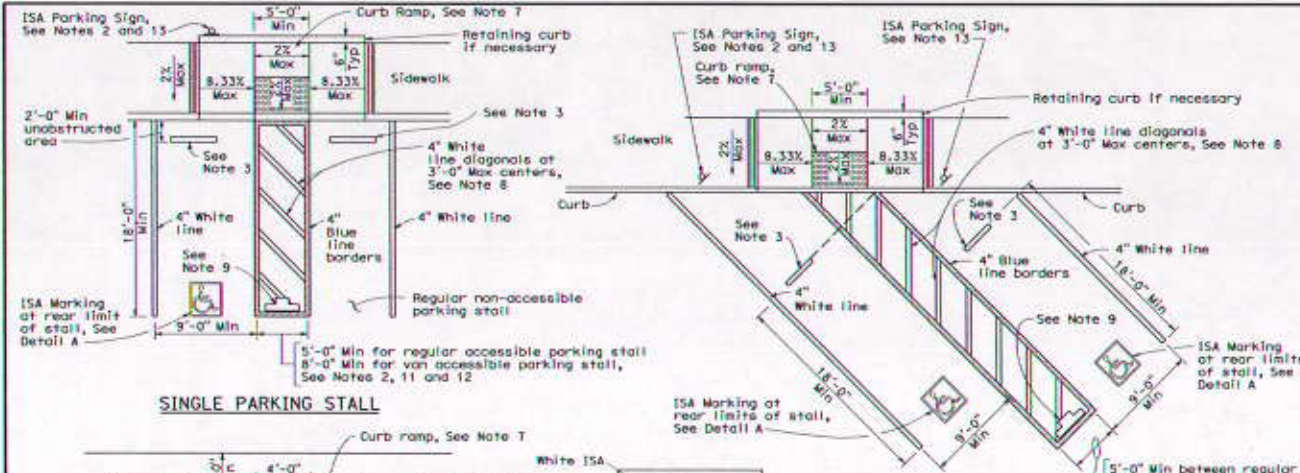
COUNTY	ROUTE	POST MILES	SHEET NO.	TOTAL SHEETS

H. David Cohen
REGISTERED CIVIL ENGINEER

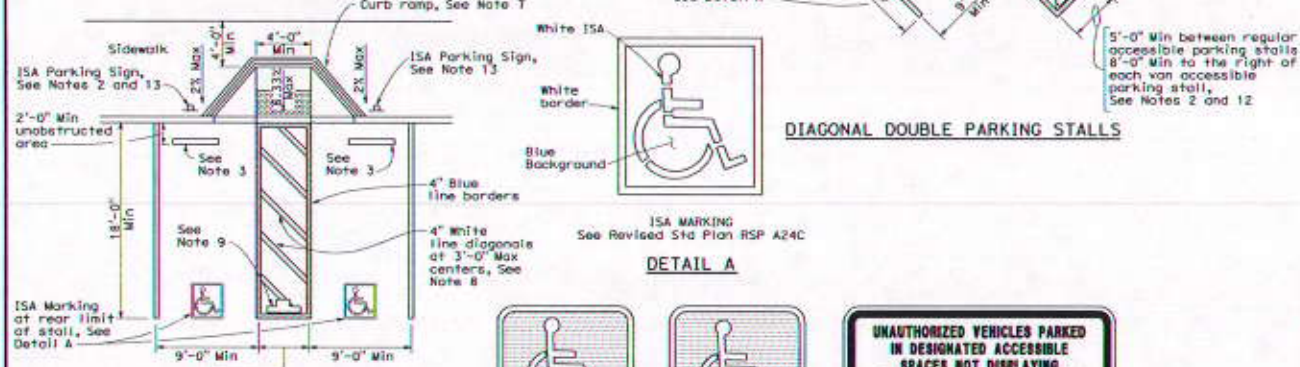
June 6, 2008
PLANS APPROVAL DATE

The State of California or its officers or agents shall not be responsible for the planning or completeness of electronic copies of this plan.

To accompany plans dated _____



SINGLE PARKING STALL



DIAGONAL DOUBLE PARKING STALLS



DETAIL A



DOUBLE PARKING STALL

TABLE A

Total Number of Parking Spaces or Stalls	Minimum Number of Disabled Accessible Parking Spaces or Stalls
1-25	1
26-50	2
51-75	3
76-100	4
101-150	5
151-200	6
201-300	7
301-400	8
401-500	9
501-1000	2 percent of total
Greater than 1001	20 plus 1 for each 100 or fraction thereof over 1001



SIGN R99 (CA)



SIGN R99C (CA)
See Note 6



PLAQUE R99B (CA)
SIGN R99 (CA) with PLAQUE R99B (CA)
See Note 6



SIGN R100B (CA)
See Note 10



SIGN R7-8b
See Notes 2 and 6

OFF-STREET PARKING SIGNS
(Parking lot or garage)
See Note 6

NOTES:

1. Accessible parking spaces serving a particular building shall be located on the shortest accessible route of travel from adjacent parking to an accessible entrance. In parking facilities that do not serve a particular building, accessible parking shall be located on the shortest accessible route of travel to an accessible pedestrian entrance of the parking facility.
2. One in every eight accessible off-street parking stalls, but not less than one, shall be served by an accessible aisle of 8'-0" minimum width and shall be signed van accessible. The R7-8b sign shall be mounted below the R99B (CA) plaque or the R99C (CA) sign.
3. In each parking stall, a curb or bumper shall be provided and located to prevent encroachment of vehicles over the required width of walkway. Parking stalls shall be so located that persons with disabilities are not compelled to wheel or walk behind parked cars other than their own.
4. Surface slopes of accessible off-street parking stalls shall be the minimum possible and shall not exceed 2 percent in any direction.
5. Table A shall be used to determine the required number of accessible parking stalls in each parking lot or garage.
6. Where Plaque R99B (CA), Sign R99C (CA) or Sign R7-8b are installed, the bottom of the sign or plaque panel shall be a minimum of 7'-0" above the surrounding surface.
7. Curb ramps shall conform to the details shown on Revised Standard Plan RSP A88A.
8. Blue paint, instead of white may be used for marking accessibility aisles in areas where snow may cause white markings to not be visible.
9. The words "NO PARKING", shall be painted in white letters no less than 1'-0" high and located so that it is visible to traffic enforcement officials. See Revised Standard Plan RSP A90A for details of the "NO PARKING" pavement marking.
10. A R100B (CA) sign shall be posted in a conspicuous place at each entrance to off-street parking facilities or immediately adjacent to and visible from each stall. The sign shall include the address where the towed vehicle may be reclaimed and the telephone number of the local traffic law enforcement agency.
11. Where a single (non-van) accessible parking space is provided, the loading and unloading access aisle shall be on the passenger side of the vehicle as the vehicle is going forward into the parking space.
12. Where a van accessible parking space is provided, the loading and unloading access aisle shall be 8'-0" wide minimum, and shall be on the passenger side of the vehicle as the vehicle is going forward into the parking space.
13. Accessible Parking Only Sign shall be Sign R99C (CA) or Sign R99 (CA) with Plaque R99B (CA).

STATE OF CALIFORNIA
DEPARTMENT OF TRANSPORTATION
**ACCESSIBLE PARKING
OFF-STREET**

NO SCALE
RSP A90A DATED JUNE 6, 2008 SUPERSEDES STANDARD PLAN A90A
DATED MAY 1, 2006 - PAGE 117 OF THE STANDARD PLANS BOOK DATED MAY 2006.

REVISED STANDARD PLAN RSP A90A