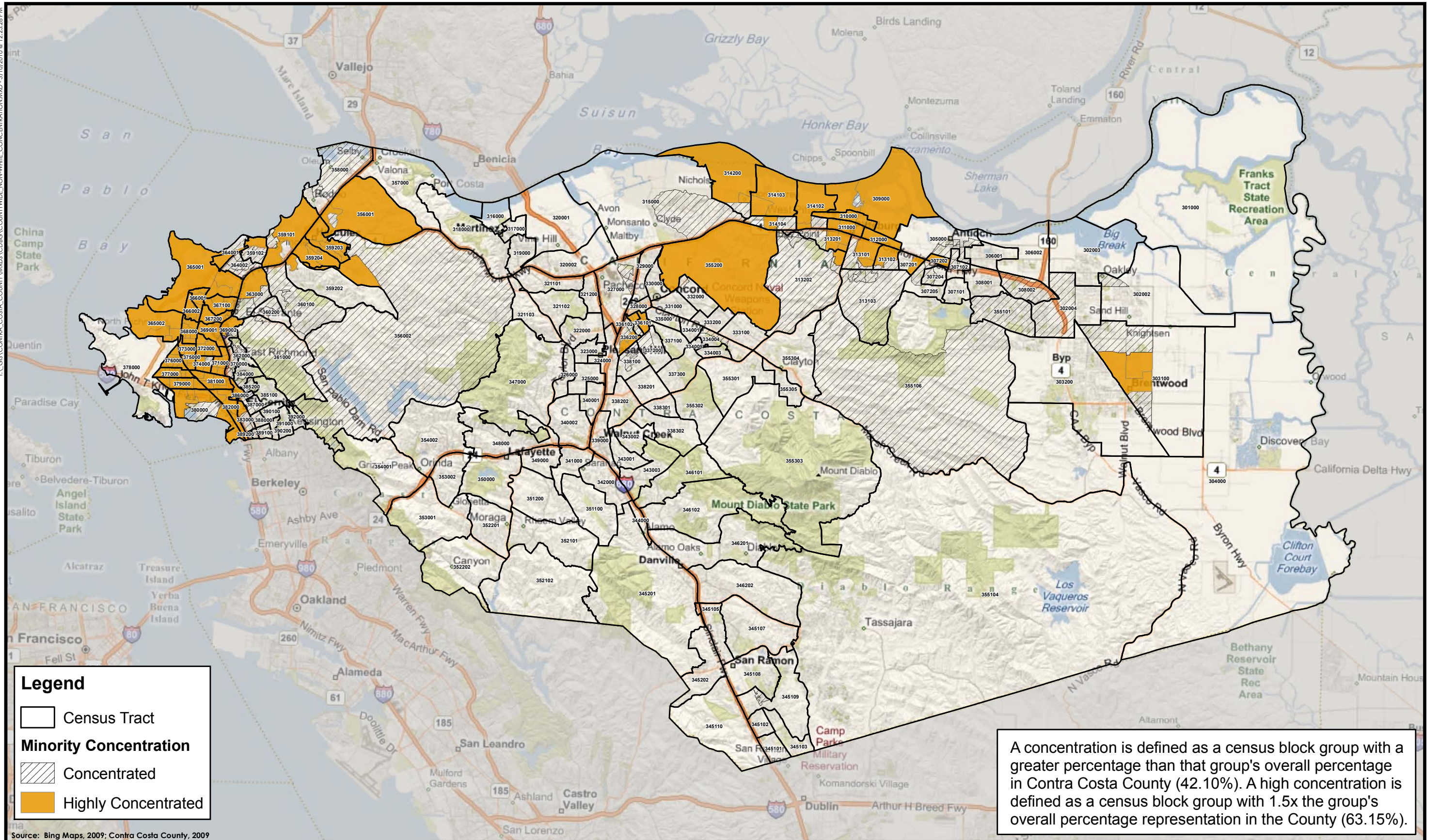

APPENDIX 1.
AREAS OF MINORITY CONCENTRATION

T:\GIS\CONTRA_COSTA_COUNTY\WMS\CDIBG\COUNTYWIDE_NONWHITE_CONCENTRATION.MXD - 3/10/2010 @ 12:23:28 PM



Legend

- Census Tract
- Minority Concentration**
- Concentrated
- Highly Concentrated

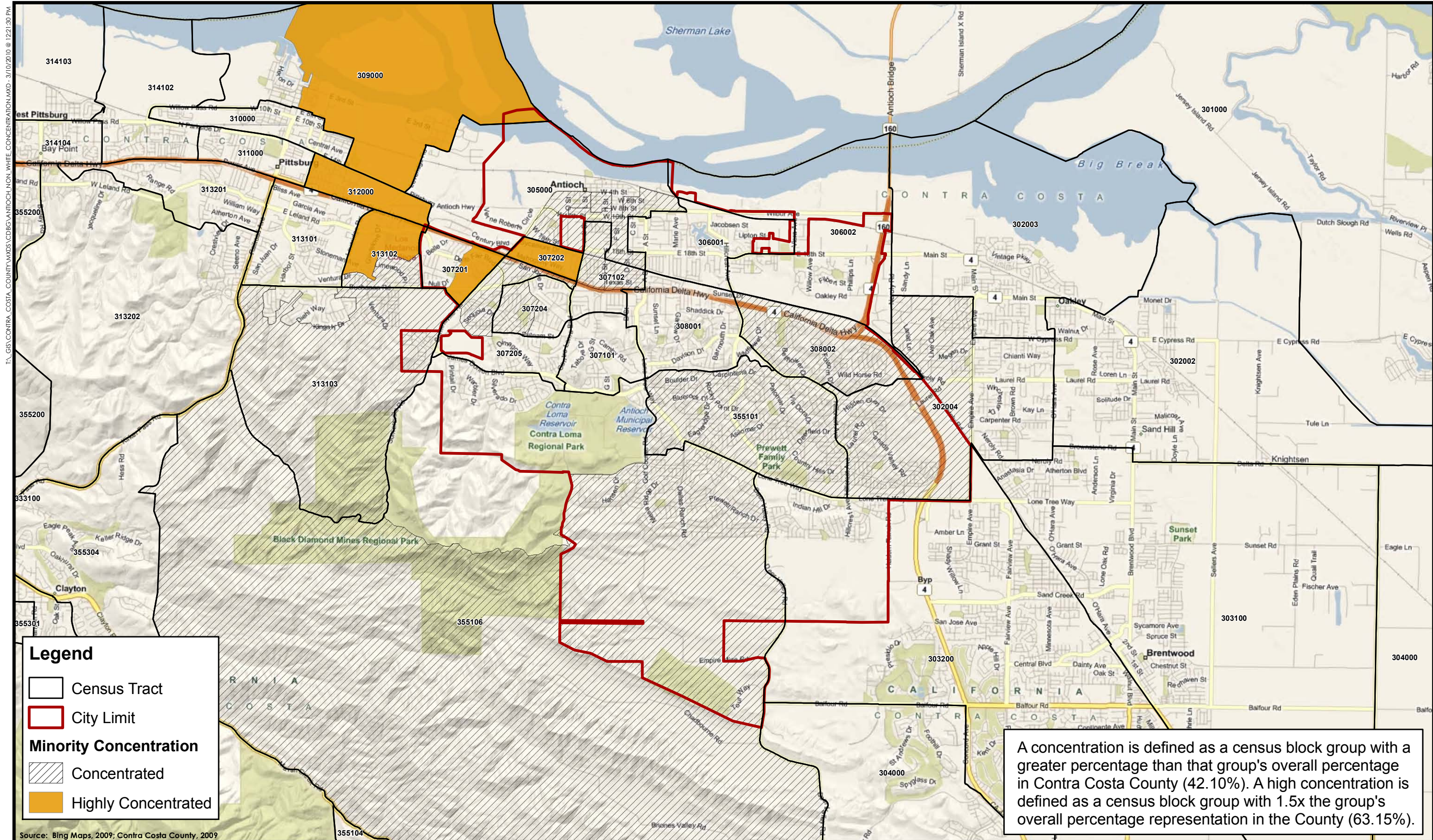
A concentration is defined as a census block group with a greater percentage than that group's overall percentage in Contra Costa County (42.10%). A high concentration is defined as a census block group with 1.5x the group's overall percentage representation in the County (63.15%).

Source: Bing Maps, 2009; Contra Costa County, 2009



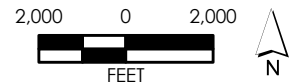
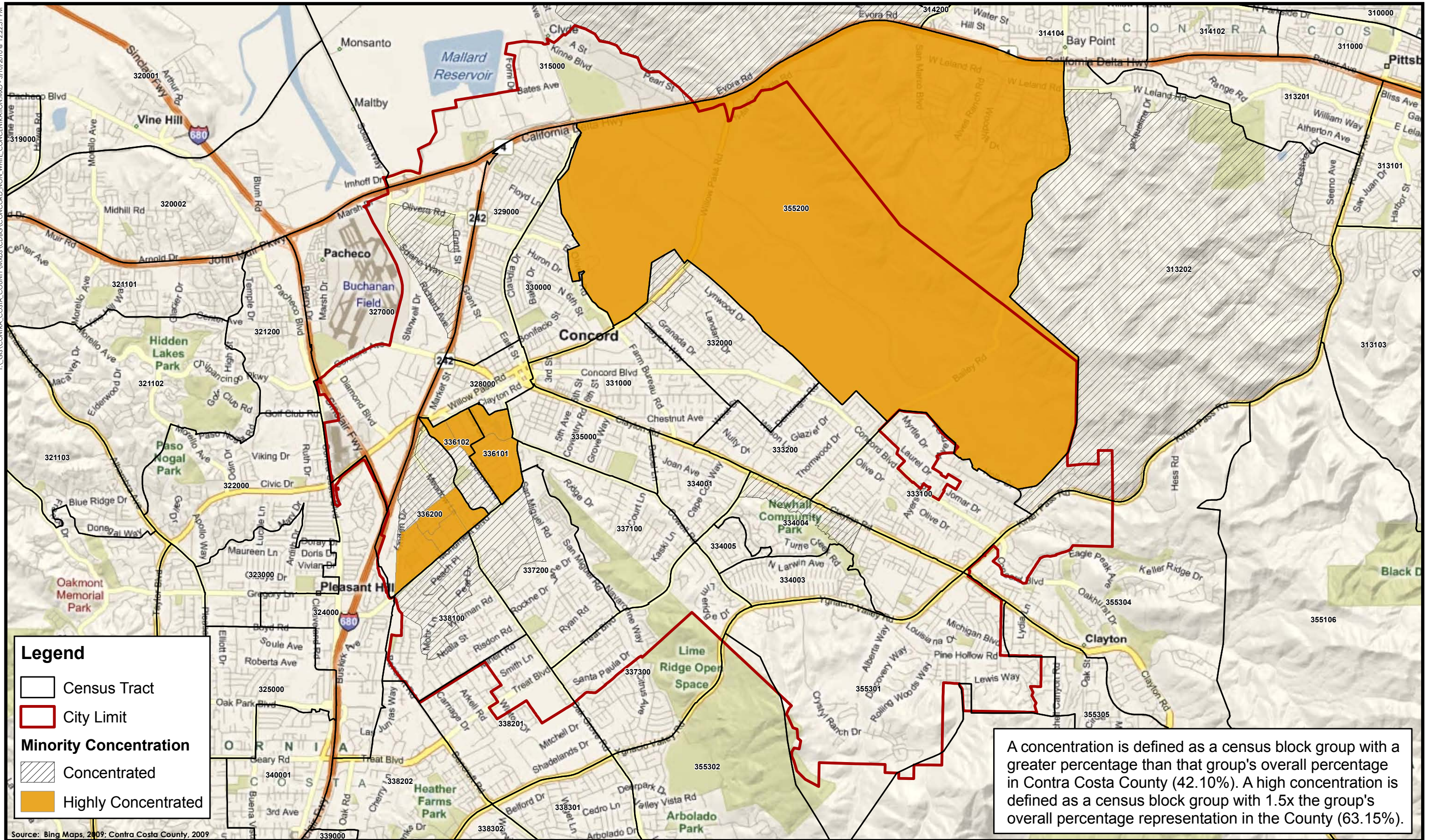
Map 1
Minority Concentration - Contra Costa County





Map 2
Minority Concentration - Antioch

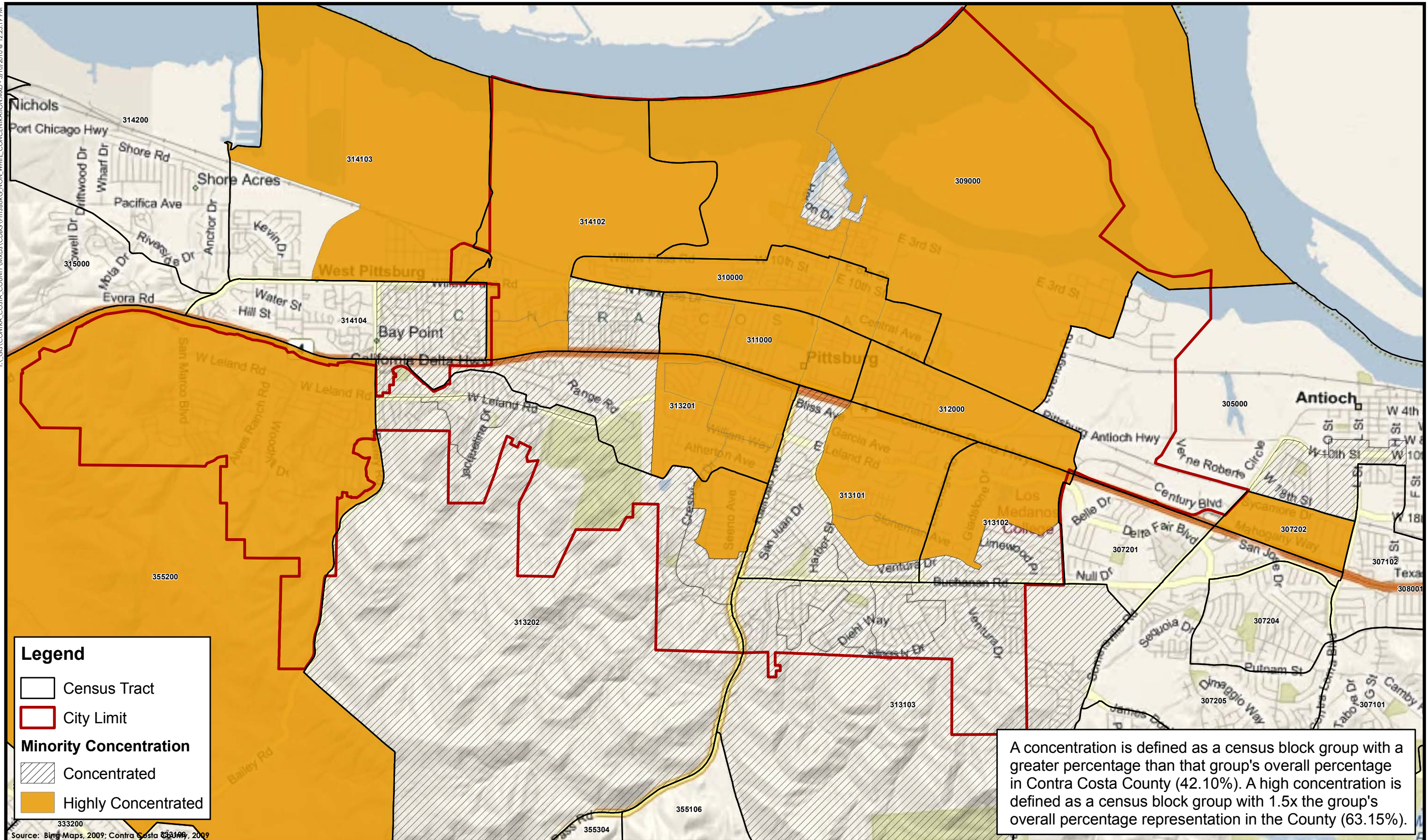
T:\GIS\CONTRA_COSTA_COUNTY\MXD\CONCORD_NON_WHITE_CONCENTRATION.MXD - 3/10/2010 @ 12:22:31 PM



Map 3
Minority Concentration - Concord



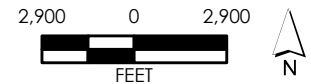
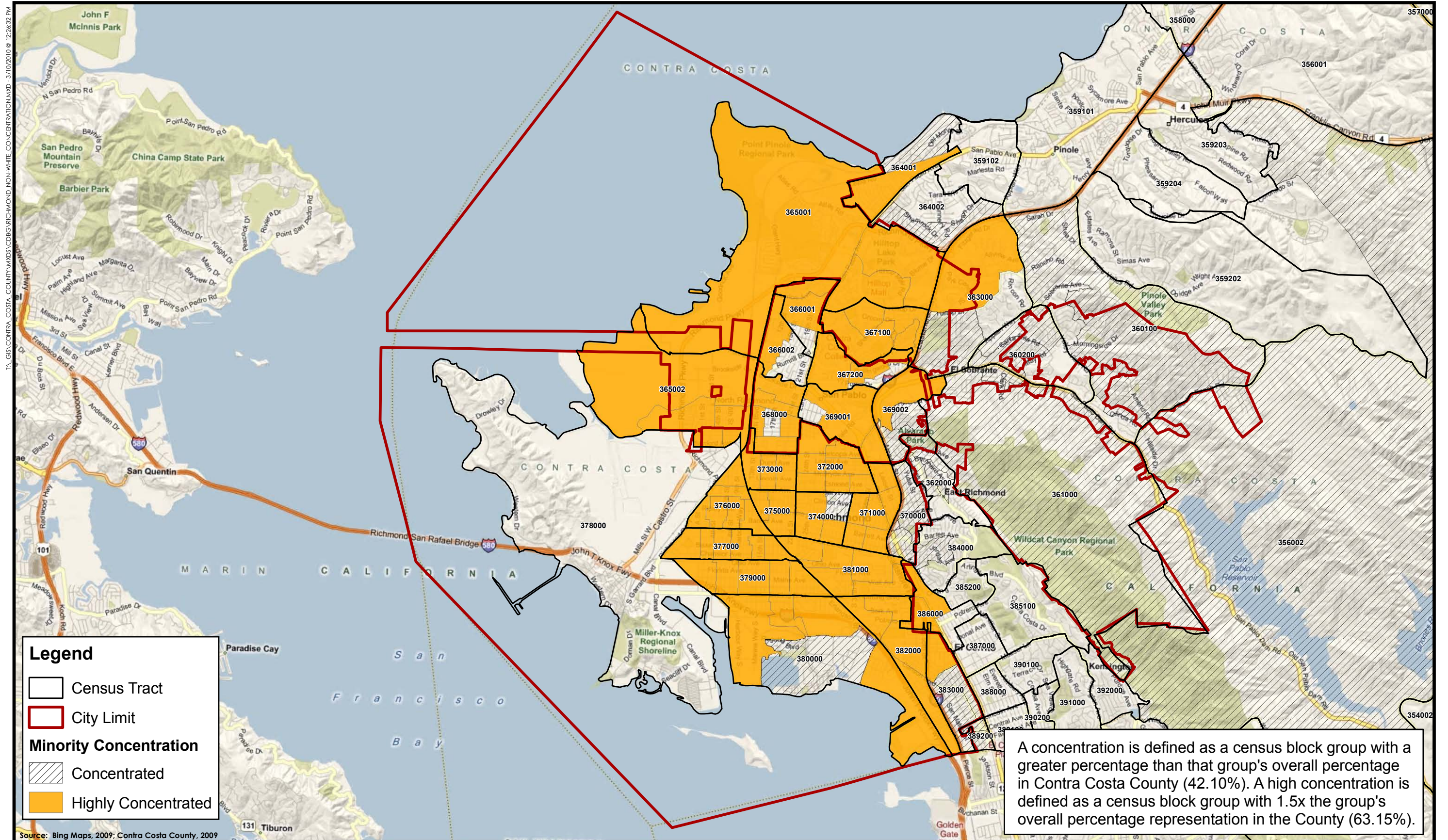
T:\GIS\CONTRA_COSTA_COUNTY\XMS\CDR\GIS\PITTSBURG_NON_WHITE_CONCENTRATION.MXD - 3/10/2010 @ 12:25:19 PM



Map 4
Minority Concentration - Pittsburgh



T:\GIS\CONTRA_COSTA_COUNTY\MXD\CDBG_RICHMOND_NONWHITE_CONCENTRATION.MXD - 3/10/2010 @ 12:26:32 PM



Map 5
Minority Concentration - Richmond



