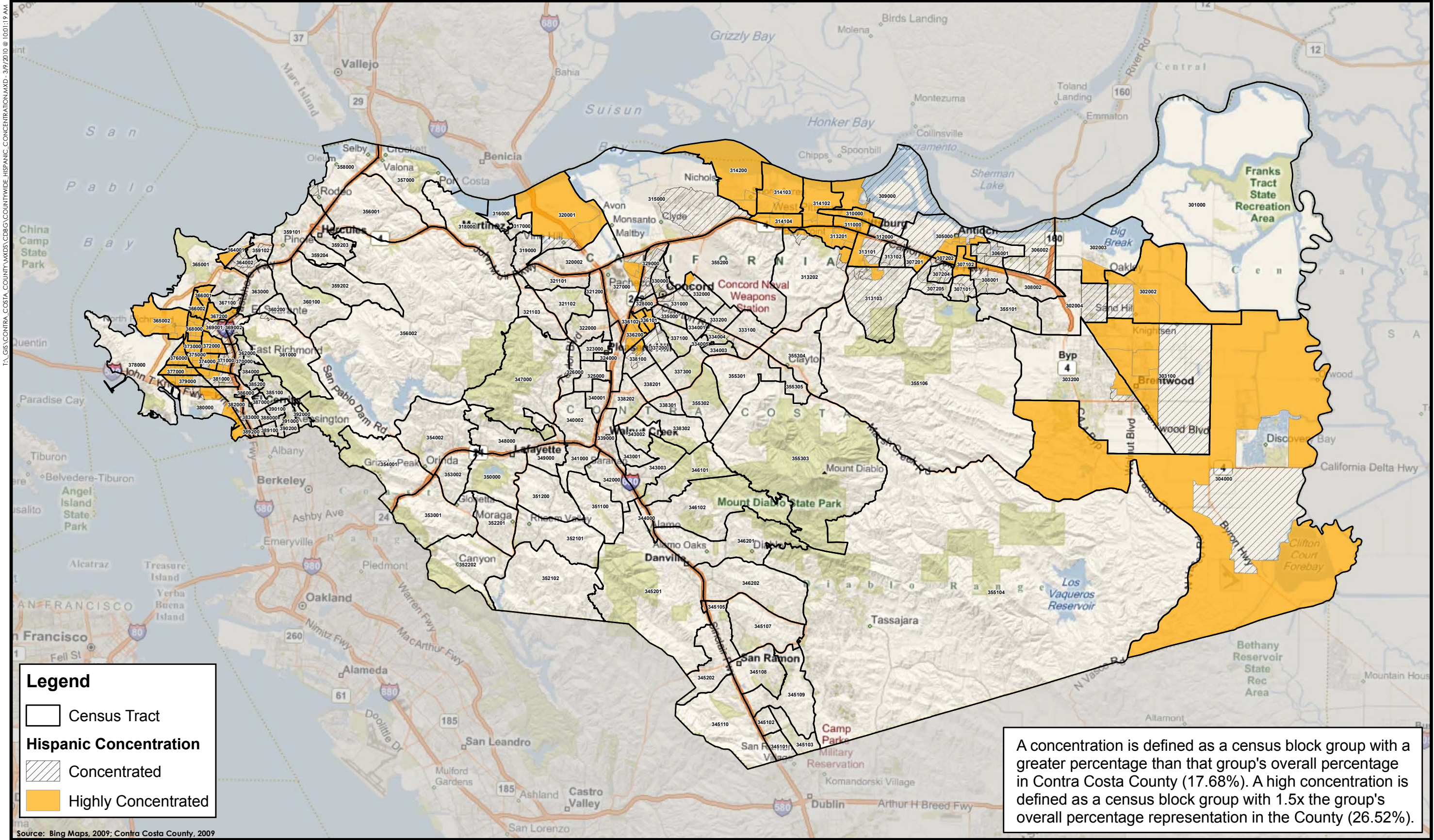

APPENDIX 2.
AREAS OF HISPANIC CONCENTRATION
(MAPS)



T:\GIS\CONTRA_COSTA_COUNTY\WMS\CDBG\COUNTYWIDE_HISPANIC_CONCENTRATION.MXD - 3/9/2010 @ 10:01:19 AM

Legend

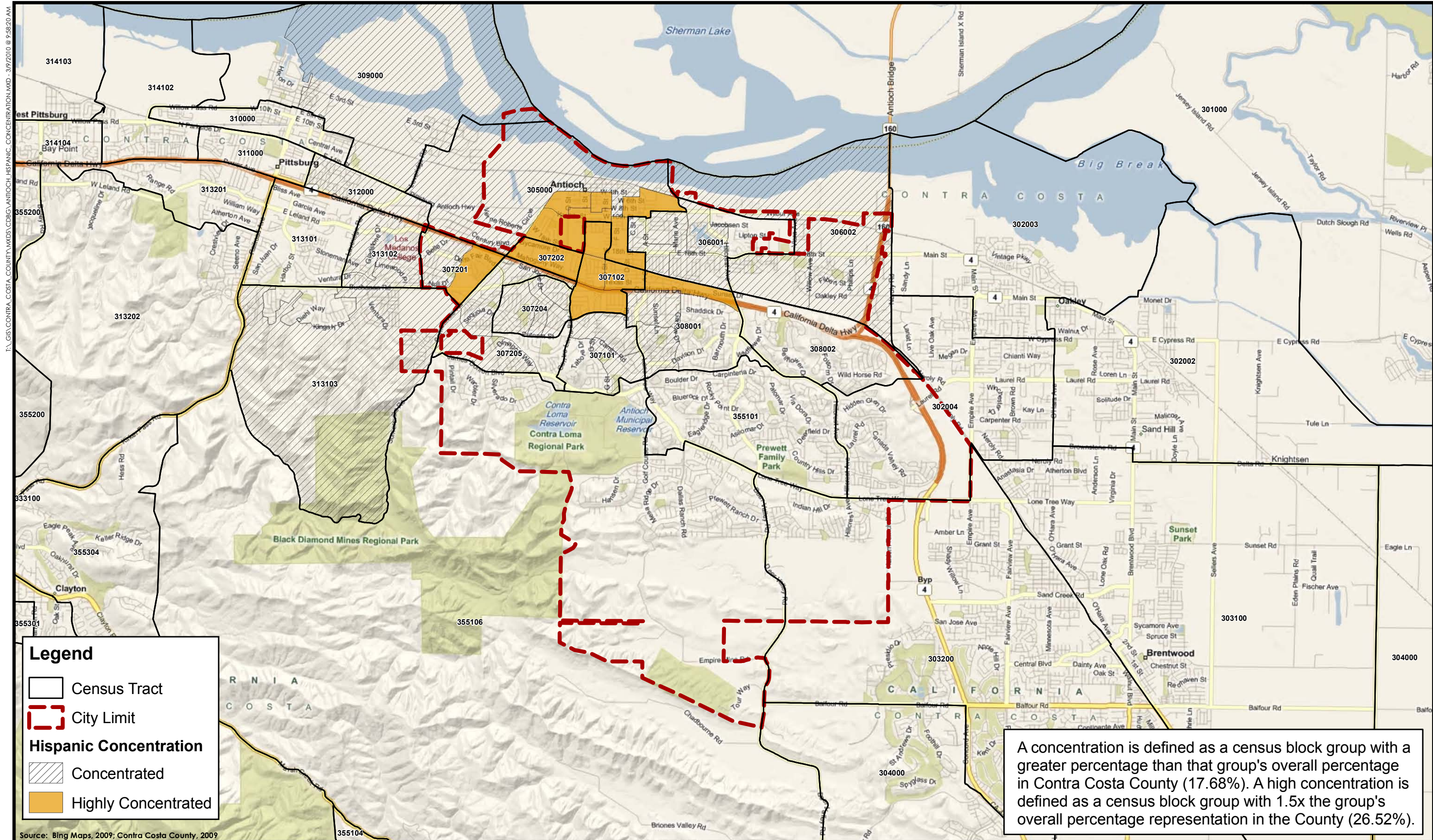
- Census Tract
- Hispanic Concentration**
- Concentrated
- Highly Concentrated

A concentration is defined as a census block group with a greater percentage than that group's overall percentage in Contra Costa County (17.68%). A high concentration is defined as a census block group with 1.5x the group's overall percentage representation in the County (26.52%).



Map 6
Hispanic Concentration - Contra Costa County

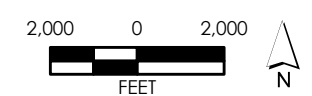
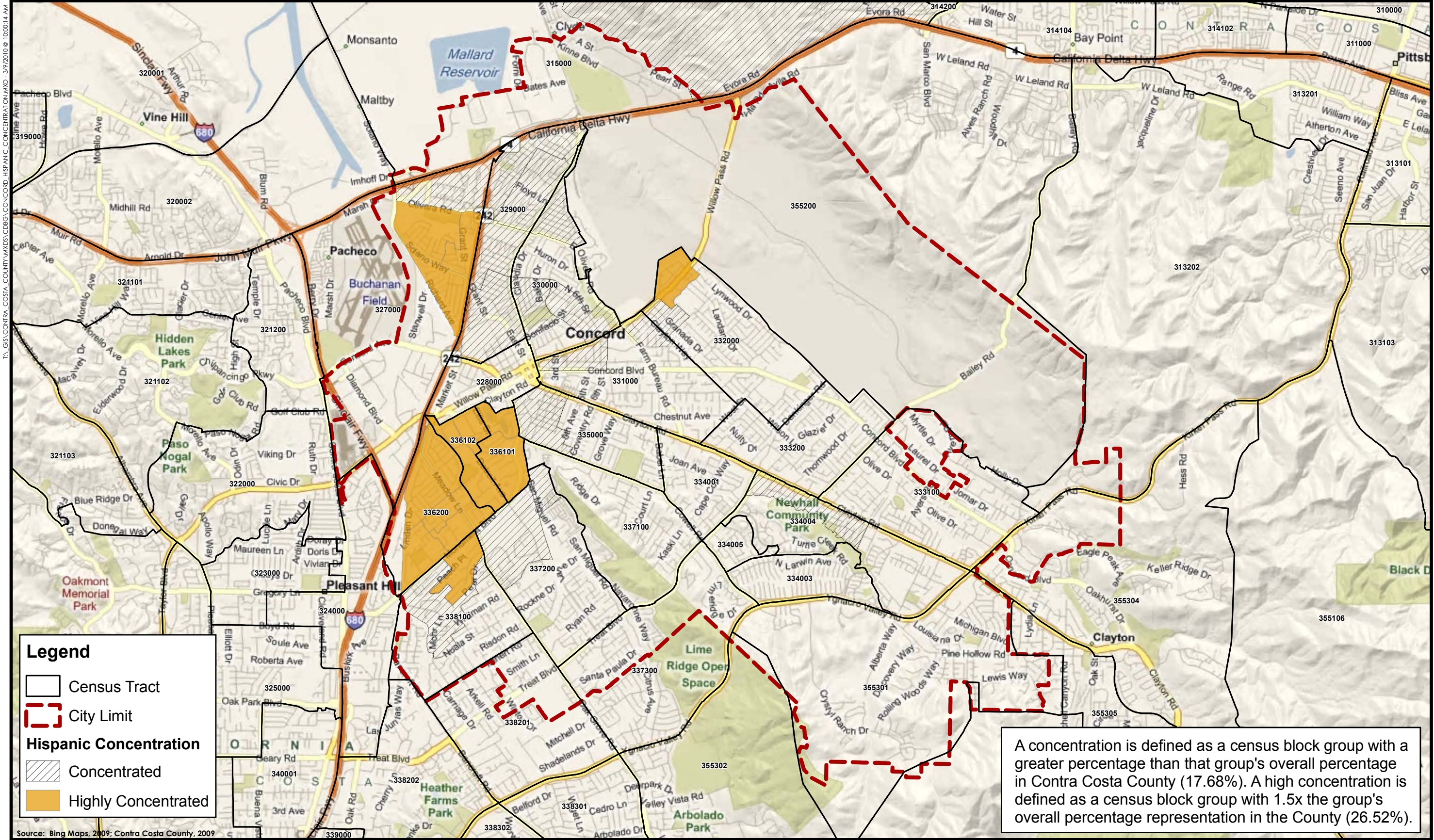




Map 7
Hispanic Concentration - Antioch



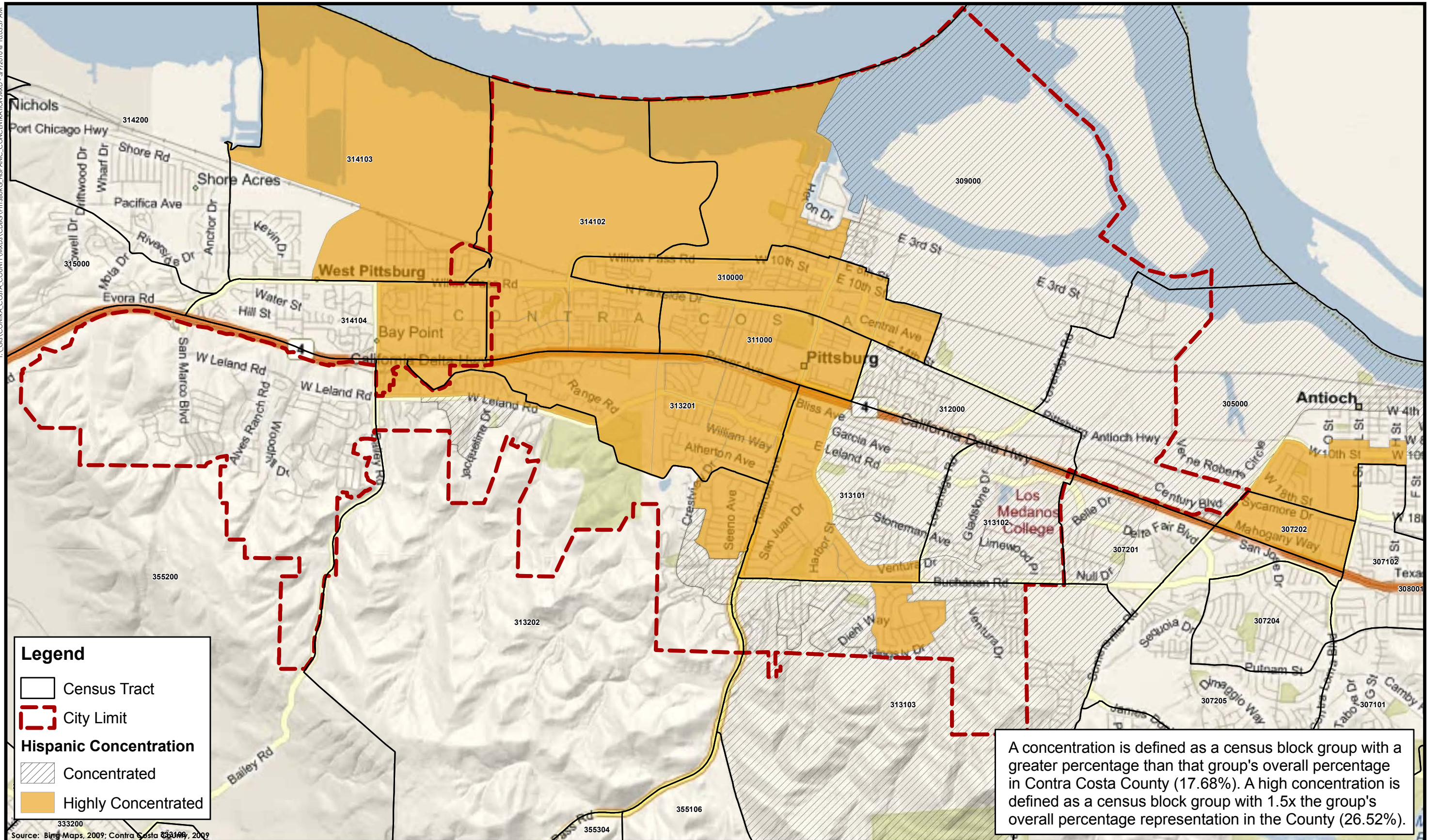
T:\GIS\CONTRA_COSTA_COUNTY\MAPS\CDBG\CONCORD_HISPANIC_CONCENTRATION.MXD - 3/9/2010 @ 10:00:14 AM



Map 8
Hispanic Concentration - Concord



T:\GIS\CONTRA_COSTA_COUNTY\MXD\CS_CDBG\PITTSBURG_HISPANIC_CONCENTRATION.MXD - 3/9/2010 @ 10:03:37 AM



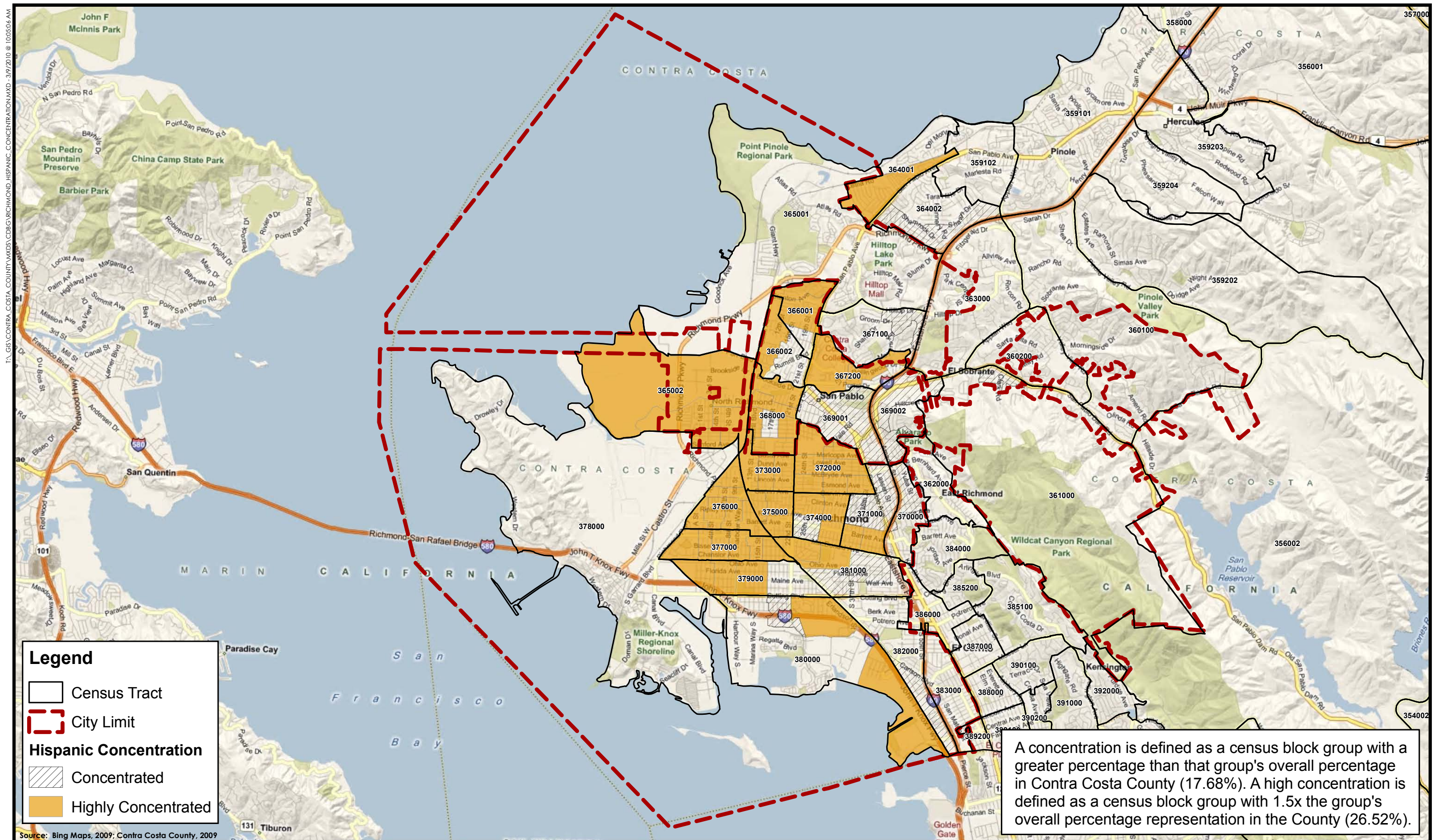
Source: Bing Maps, 2009; Contra Costa County, 2009



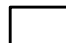



Map 9
Hispanic Concentration - Pittsburg



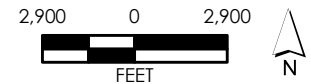
T:\GIS\CONTRA_COSTA_COUNTY\MXDS\CDBG\RICHMOND_HISPANIC_CONCENTRATION.MXD - 3/9/2010 @ 10:05:06 AM



Legend

-  Census Tract
-  City Limit
- Hispanic Concentration**
-  Concentrated
-  Highly Concentrated

A concentration is defined as a census block group with a greater percentage than that group's overall percentage in Contra Costa County (17.68%). A high concentration is defined as a census block group with 1.5x the group's overall percentage representation in the County (26.52%).



Map 10
Hispanic Concentration - Richmond



