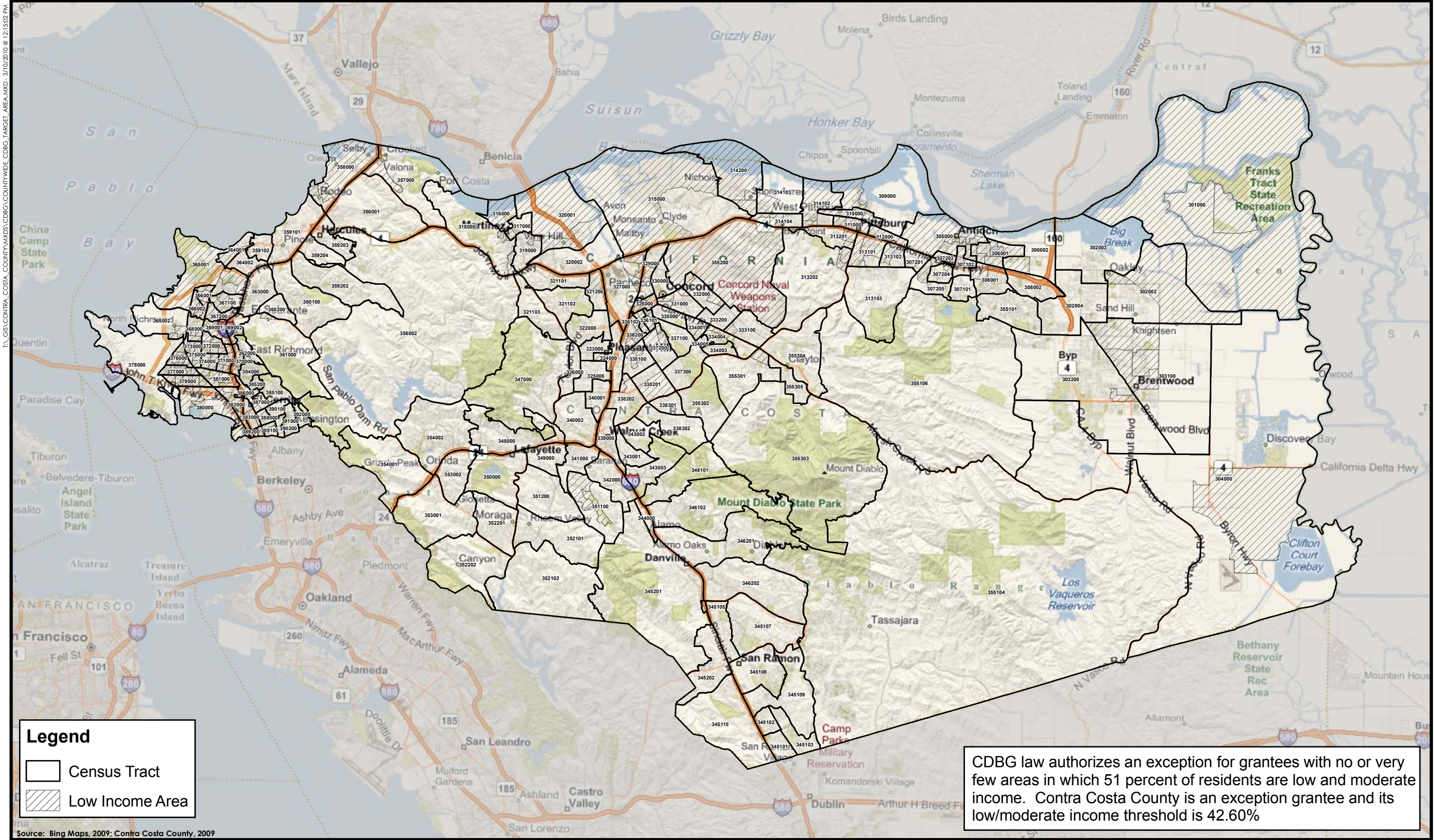

APPENDIX 3.
AREAS OF LOW-INCOME AND
VERY LOW-INCOME CONCENTRATION



T:\GIS\CONTRA_COSTA_COUNTY\WMS\CDBG\COUNTYWIDE_CDBG_TARGET_AREA.MXD - 3/10/2010 @ 12:50:22 PM

Legend

- Census Tract
- Low Income Area

CDBG law authorizes an exception for grantees with no or very few areas in which 51 percent of residents are low and moderate income. Contra Costa County is an exception grantee and its low/moderate income threshold is 42.60%



Map 11
Low Income Areas - Contra Costa County





T:\GIS\CONTRA_COSTA\COUNTY\WMS\CDIR\ANTIOCH_TARGET_AREAS.MXD - 3/10/2010 @ 12:22:22 PM

Legend

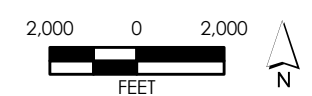
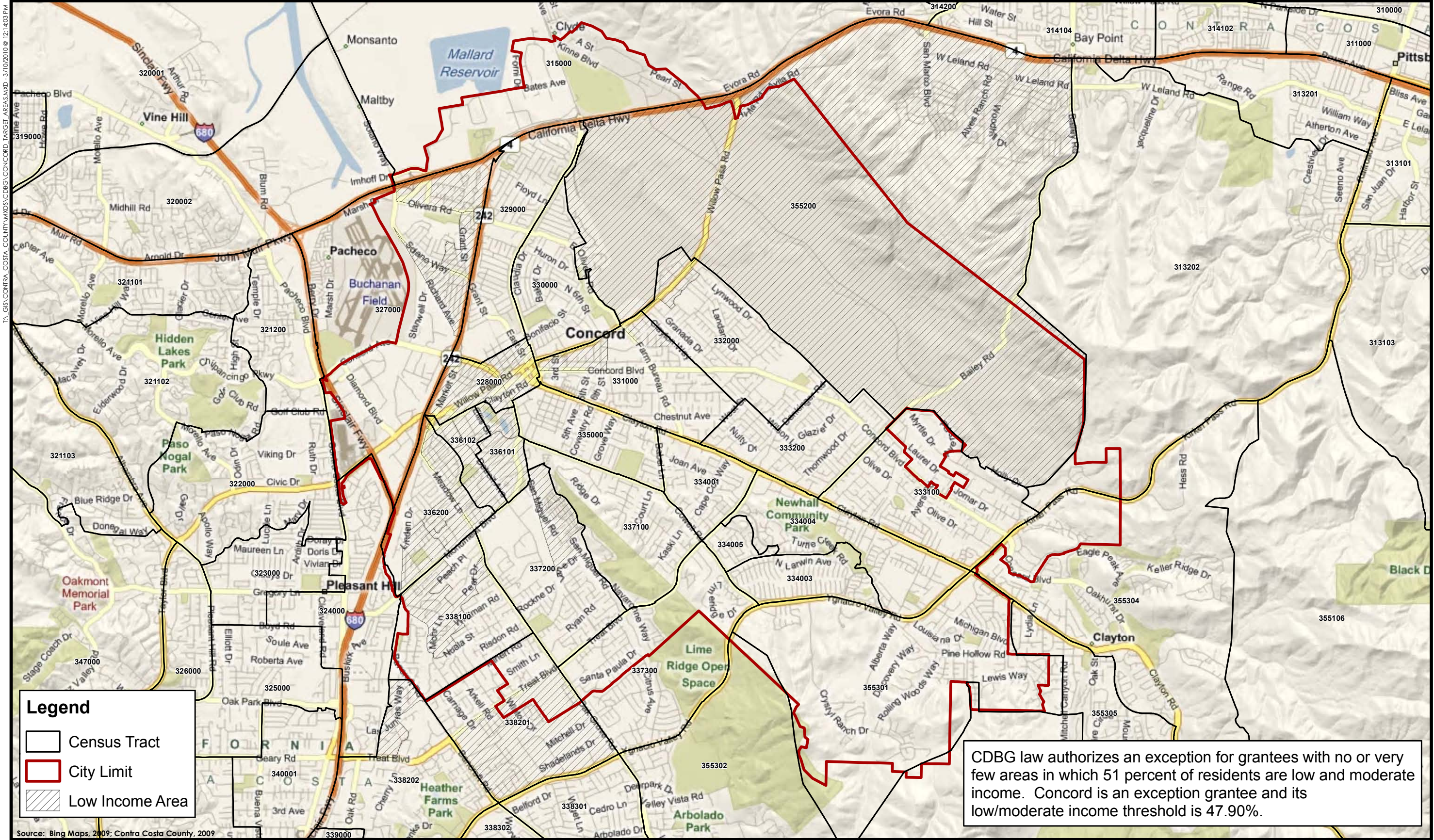
- Census Tract
- City Limit
- Low Income Area

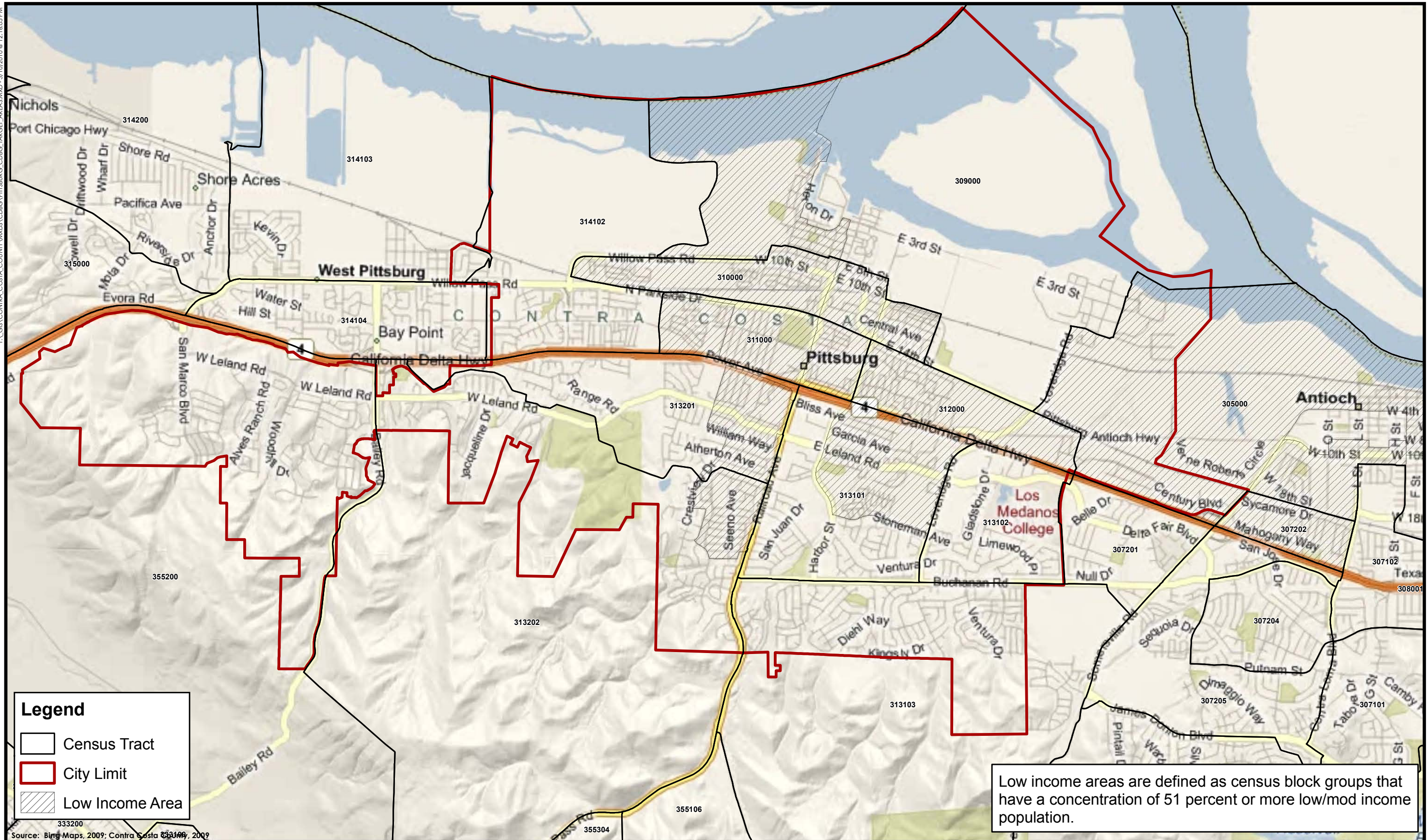
Low income areas are defined as census block groups that have a concentration of 51 percent or more low/mod income population.



Map 12
Low Income Areas - Antioch







Legend

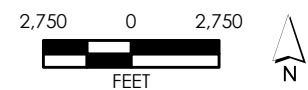
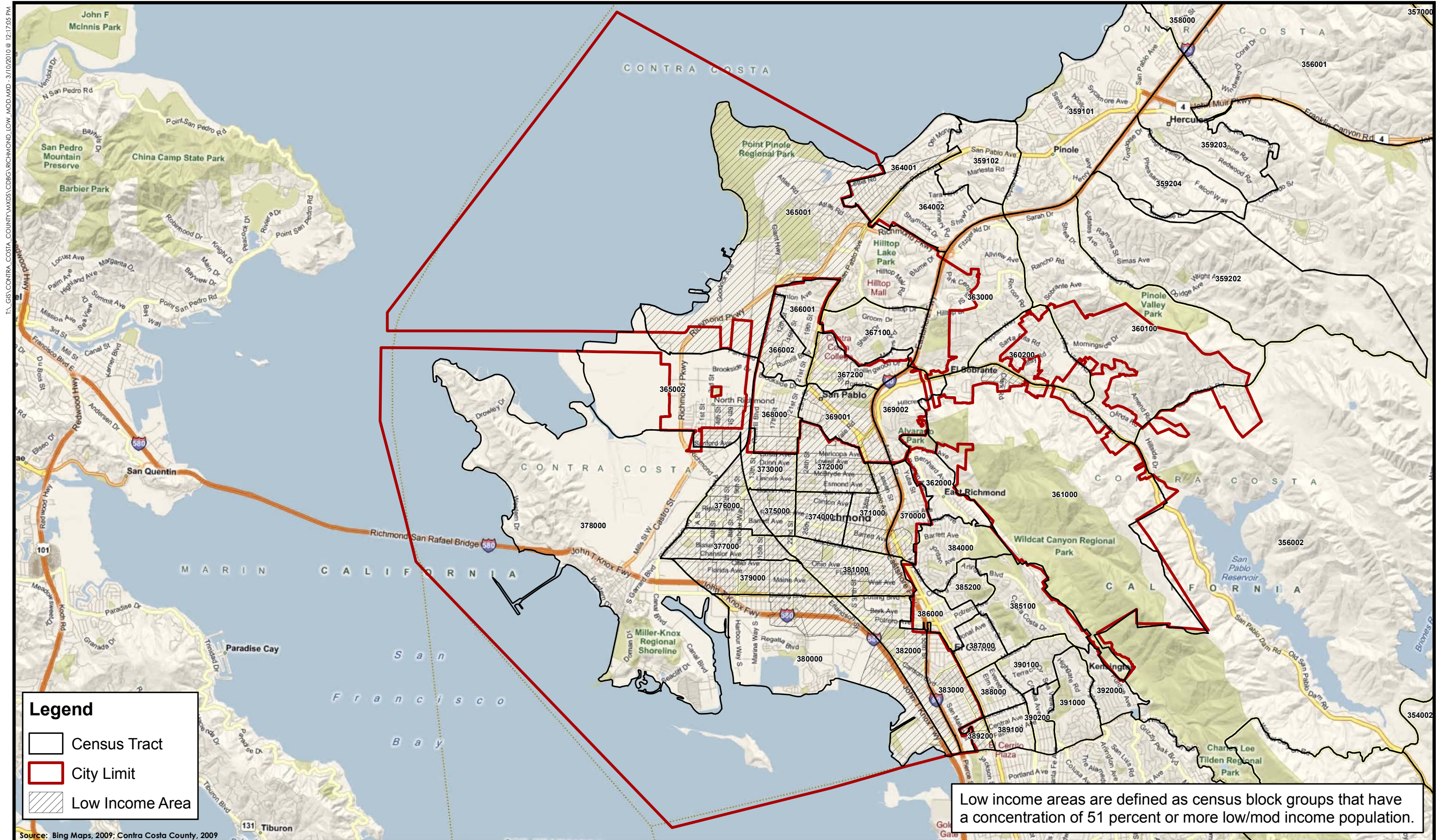
- Census Tract
- City Limit
- Low Income Area

Low income areas are defined as census block groups that have a concentration of 51 percent or more low/mod income population.

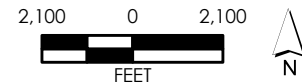
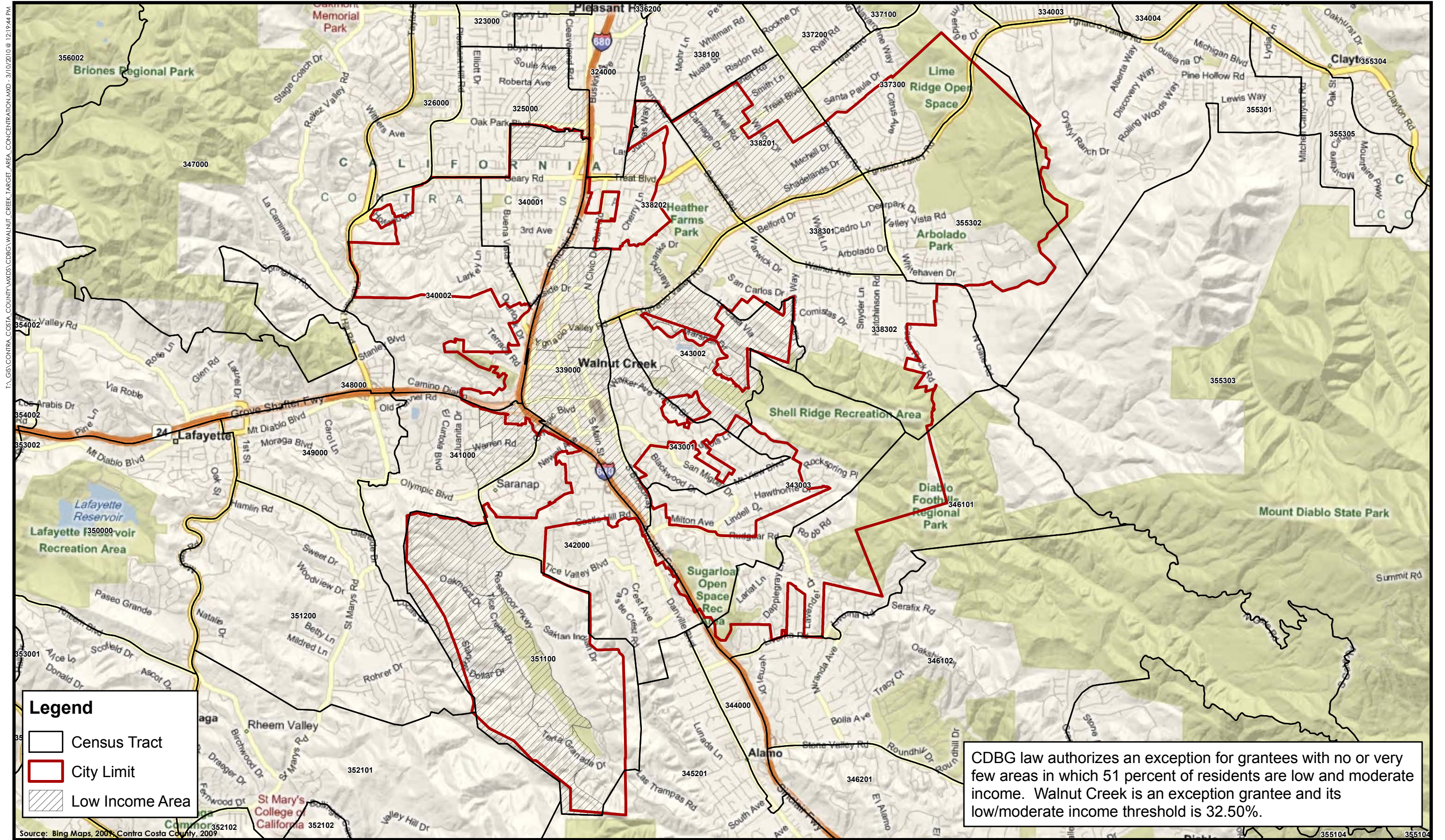
Source: Bing Maps, 2009; Contra Costa County, 2009



Map 14
Low Income Areas - Pittsburg

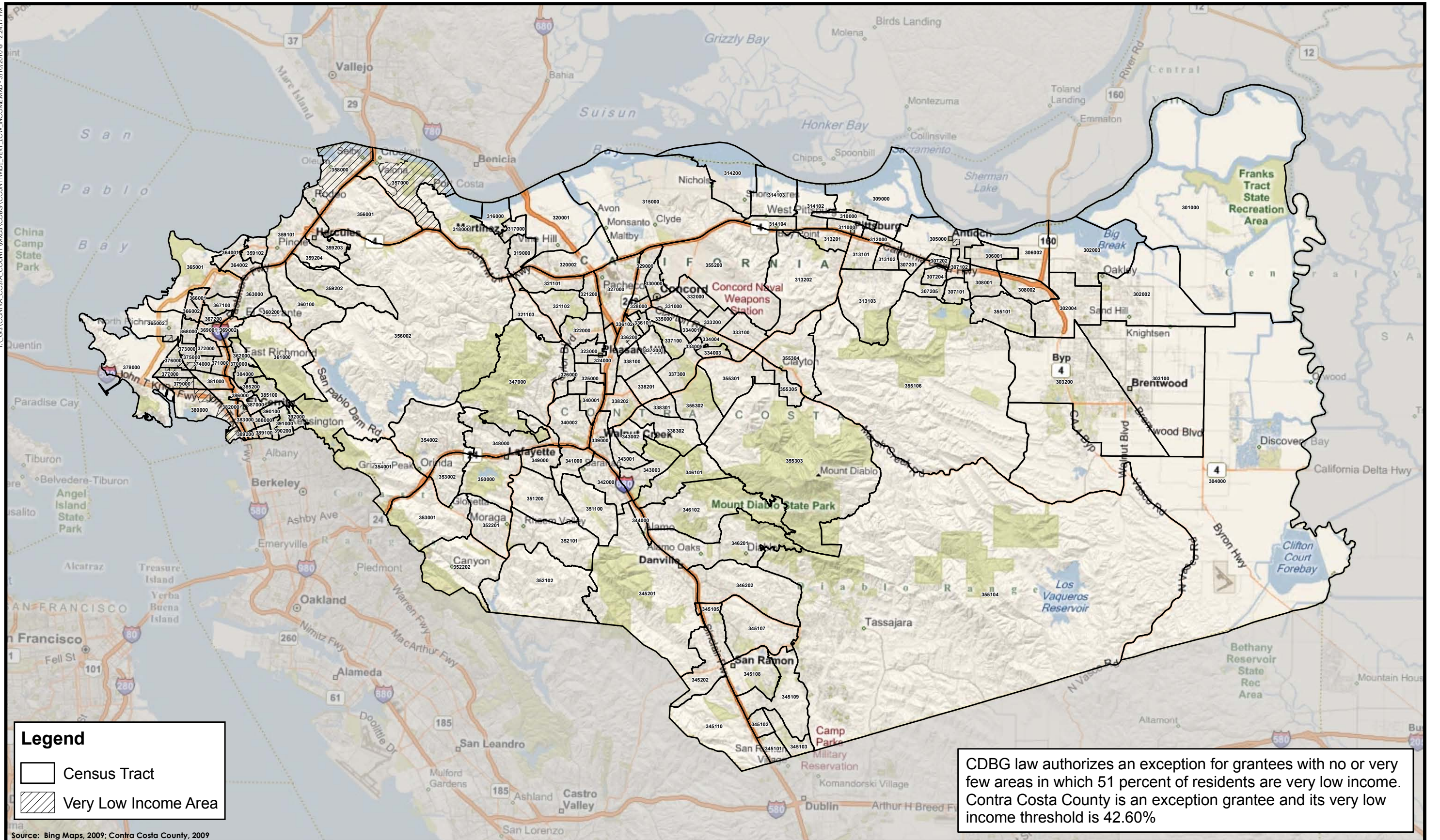


Map 15
Low Income Areas - Richmond



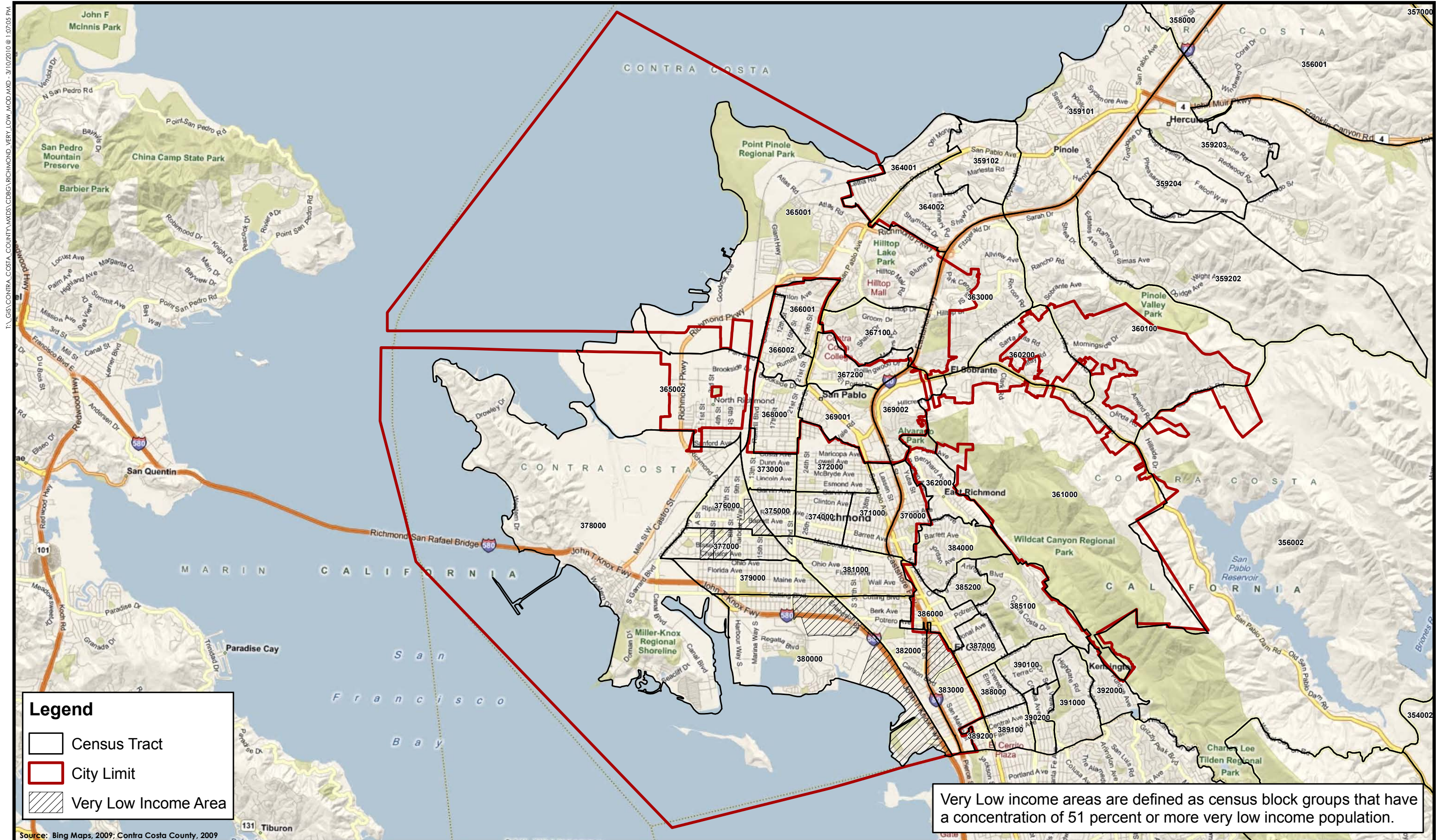
Map 16
Low Income Areas - Walnut Creek

\\GIS\CONTRA_COSTA_COUNTY\MXD\CDBG\COUNTYWIDE_VERY_LOW_INCOME\MXD - 3/10/2010 @ 12:24:17 PM



Map 17
Very Low Income Areas - Contra Costa County





Map 18
Very Low Income Areas - Richmond

