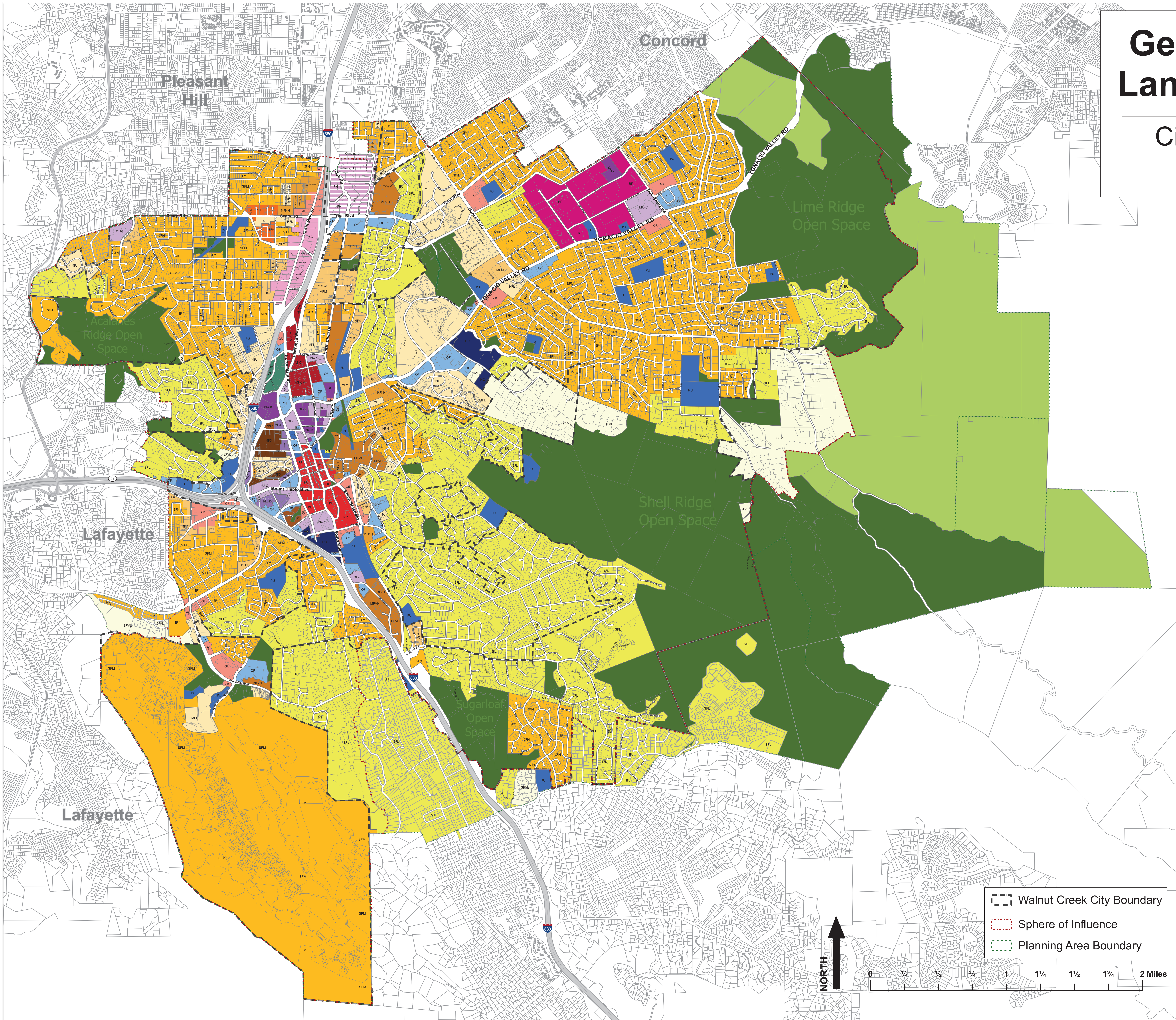


General Plan Land Use Map

City of Walnut
Creek



Single Family	
SFVL	Very Low 0.1 - 1.0 du/ac
SFL	Low 1.1 - 3.0 du/ac
SFM	Medium 3.1 - 6.0 du/ac
SFH	High 6.1 - 9.0 du/ac
Multi-Family	
MFL	Low 6.1 - 14.0 du/ac
MFM	Medium 14.1 - 22.0 du/ac
MFMH	Medium High 22.1 - 30.0 du/ac
MFVH	Very High 30.1 - 50.0 du/ac
MFSH	Special High 50.1 - 100.0 du/ac
MFD	Downtown 40.0 - 90.0 du/ac
Mixed Use	
MU-R	Residential Emphasis
MU-C	Commercial Emphasis
MU-D	Downtown
MU-GT	Golden Triangle
PH	Pleasant Hill BART Station Area Specific Plan
Commercial	
AS-CM	Automobile Sales/Service & Custom Manufacturing
GR	General Retail
PR	Pedestrian Retail
SC	Service Commercial
BP	Business Park
OF	Office
HO	Hospital
Open Space	
OSR	Recreation
OSA	Agriculture
PU	Public/Semi Public

Walnut Creek City Boundary
 Sphere of Influence
 Planning Area Boundary



Map Date: January 1, 2023

The official copy of the General Plan Land Use Map is kept at the Community Development Department and is available to the public during all regular business hours. This is one of several General Plan maps that affect development in Walnut Creek and which should be consulted. The General Plan text is itself an integral part of the land use plan for the city and must also be consulted. The City of Walnut Creek is not responsible for use of this map beyond its General Plan purposes.