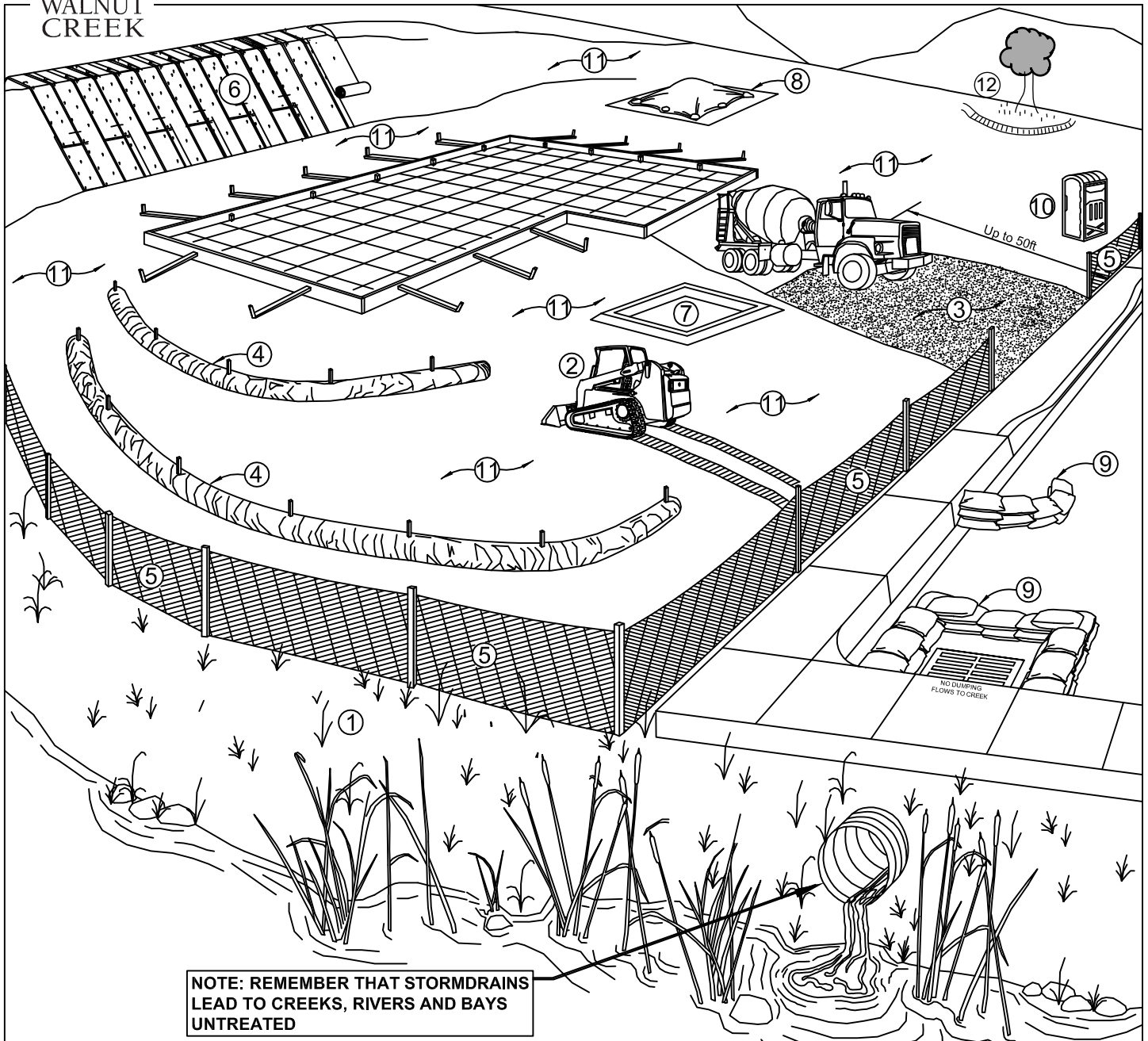




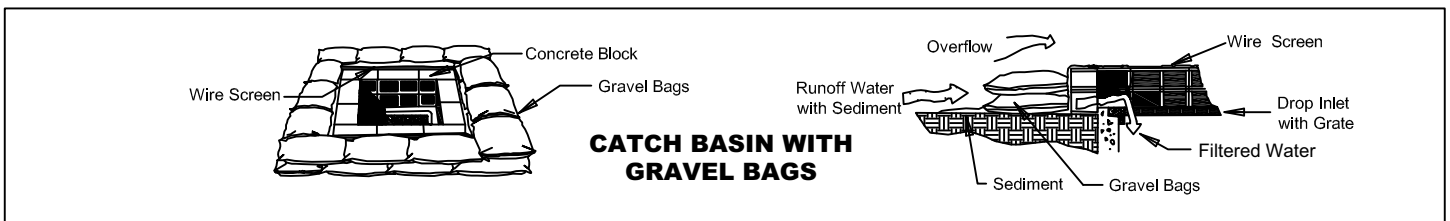
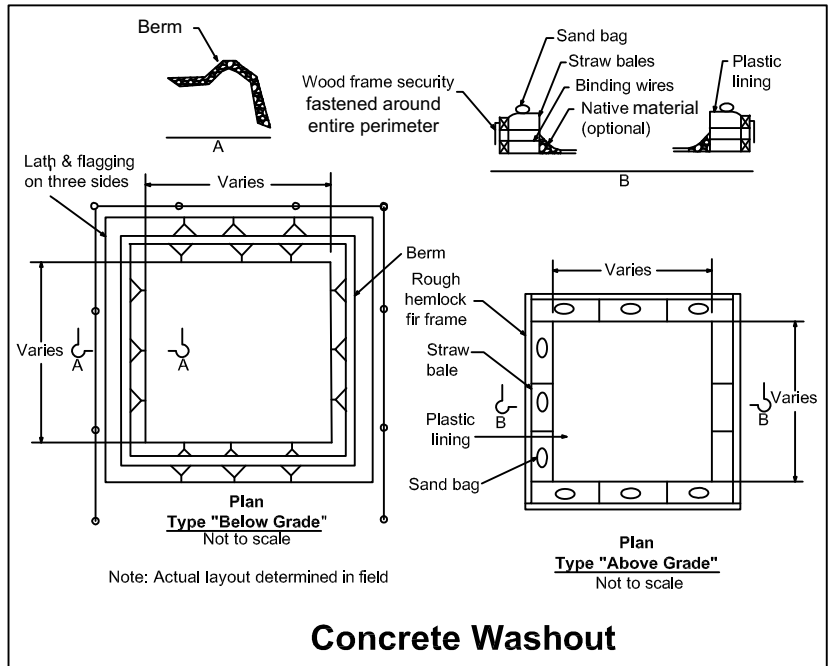
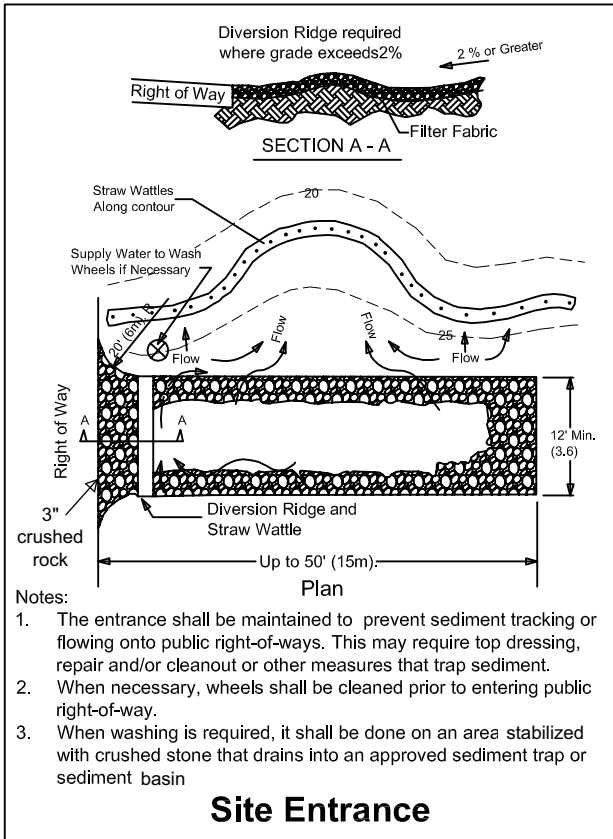
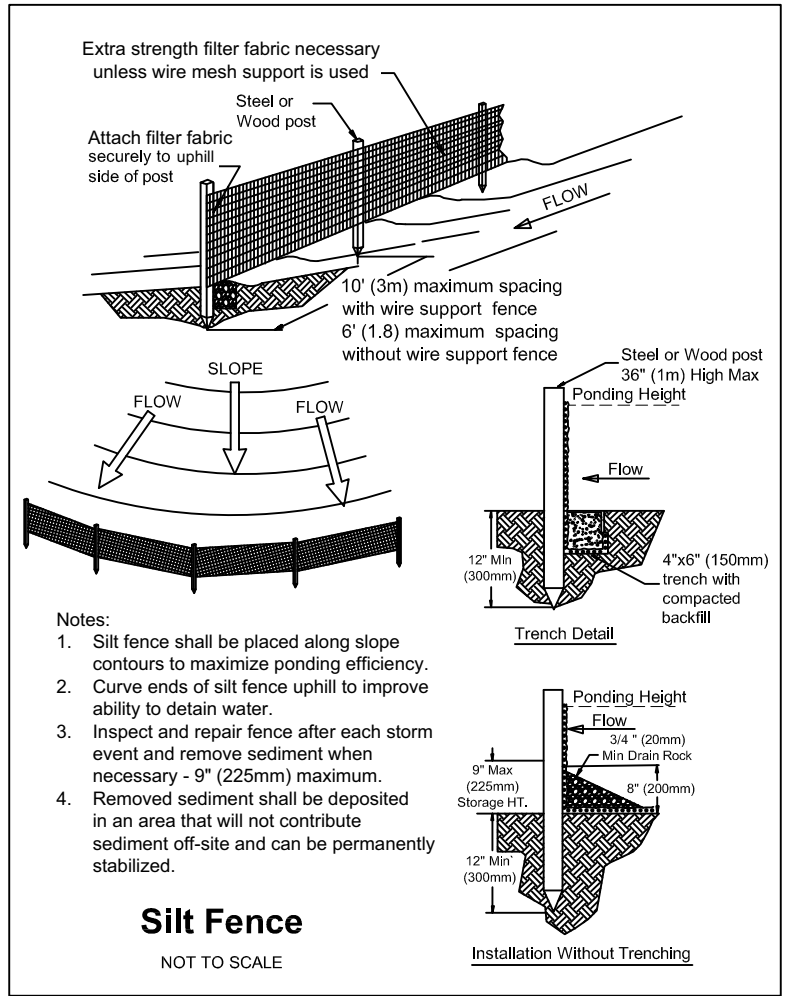
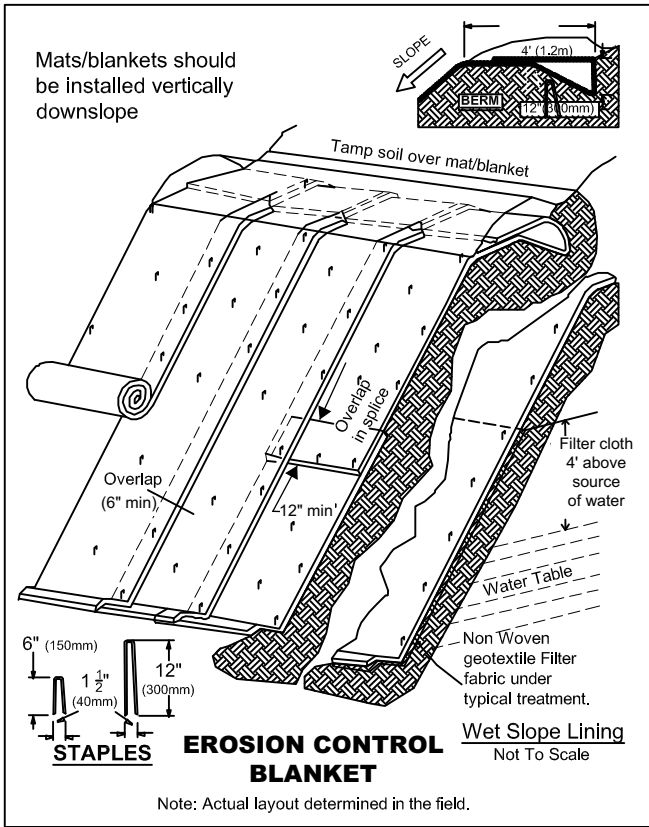
# CITY OF WALNUT CREEK MINIMUM EROSION / SEDIMENT CONTROL GUIDELINES FOR SMALL CONSTRUCTION PROJECTS



- ① **Check with** the City of Walnut Creek Public Services Department, Engineering Services Division **for creek setback requirements. No construction or earthwork within 10' of a creek bank is ever allowed unless authorized by a County 1010 permit or a Flood Control District Permit.**
- ② **During grading phase, track-walk up and down slopes (not parallel to them).**
- ③ **\*Stabilize site entrance and temporary driveway - use 3" crushed rock up to 50' (or as far as possible) to prevent tracking soil offsite.**
- ④ **\*Use straw wattles along contours with 2:1 slopes or steeper, keyed into ground at least 3" deep (typically 25' to 50' apart).**
- ⑤ **\*Install silt fence along contours as secondary measure to keep sediment onsite and to minimize vehicle and foot traffic beyond limits of site disturbance.**
- ⑥ **\*Install erosion control blankets or (equivalent) on any disturbed site with 2:1 slopes or greater.**
- ⑦ **\*Construct a concrete washout site adjacent to stabilized entrance. Clean as needed and remove at end of project.**
- ⑧ **Cover all stockpiles and landscape materials. Keep behind silt fence, away from water bodies.**
- ⑨ **\*Use pea-gravel bags (or similar product) around drain inlets located both onsite and in gutter as a last line of defense.**
- ⑩ **Place port-a-potty near stabilized site entrance, behind the curb and away from storm drain inlets and water bodies.**
- ⑪ **Cover all exposed soil with straw or straw/tackifier.**
- ⑫ **Existing vegetation should be preserved as much as possible. Areas of disturbed soil/vegetation should be revegetated as soon as practical.**

Note: Sediment and erosion control shall be continually maintained throughout the rainy season (October 1<sup>st</sup> - April 30<sup>th</sup>) and must remain effective through the construction and landscape phases. Inspect and maintain BMPs before and after rain events. \*See reverse side for detail drawings

# TYPICAL DETAILS



We thank the Marin County Stormwater Pollution Prevention Program and the County of Contra Costa for allowing us to adapt this guide.